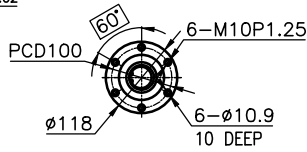
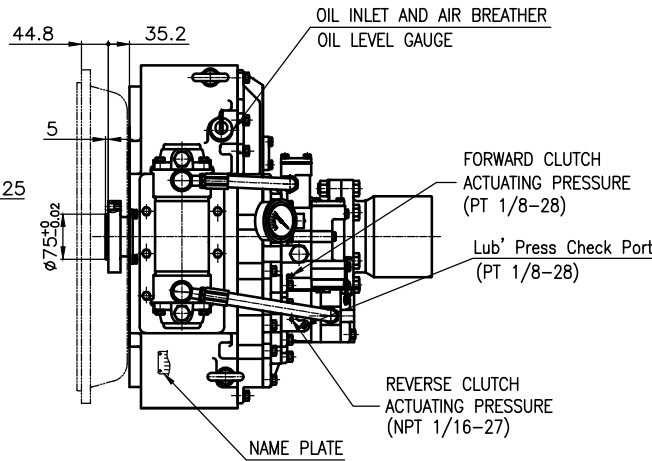


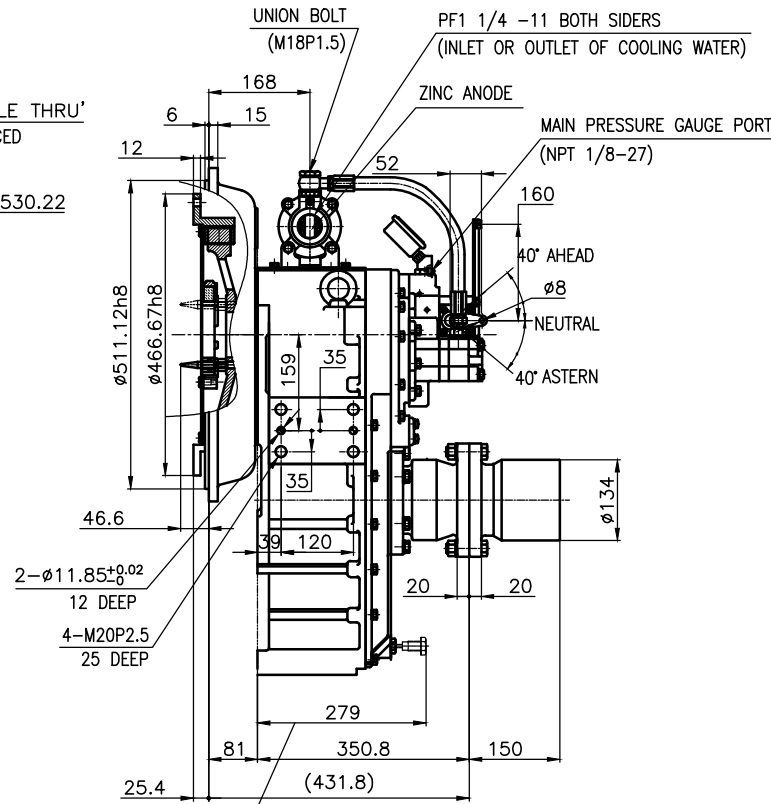
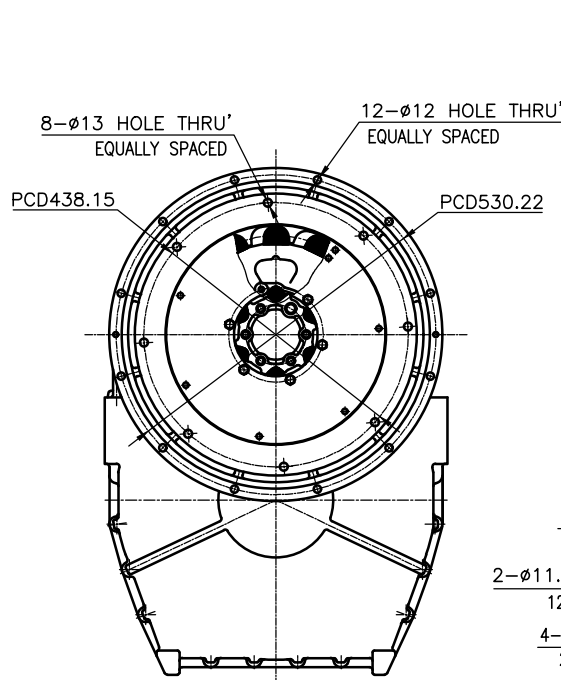
OUTPUT SHAFT COUPLING & PROPELLER COUPLING DIMENSION



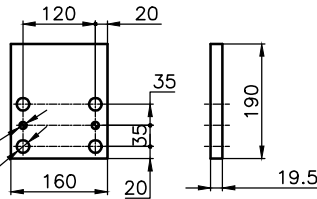
INPUT COUPLING DIMENSION



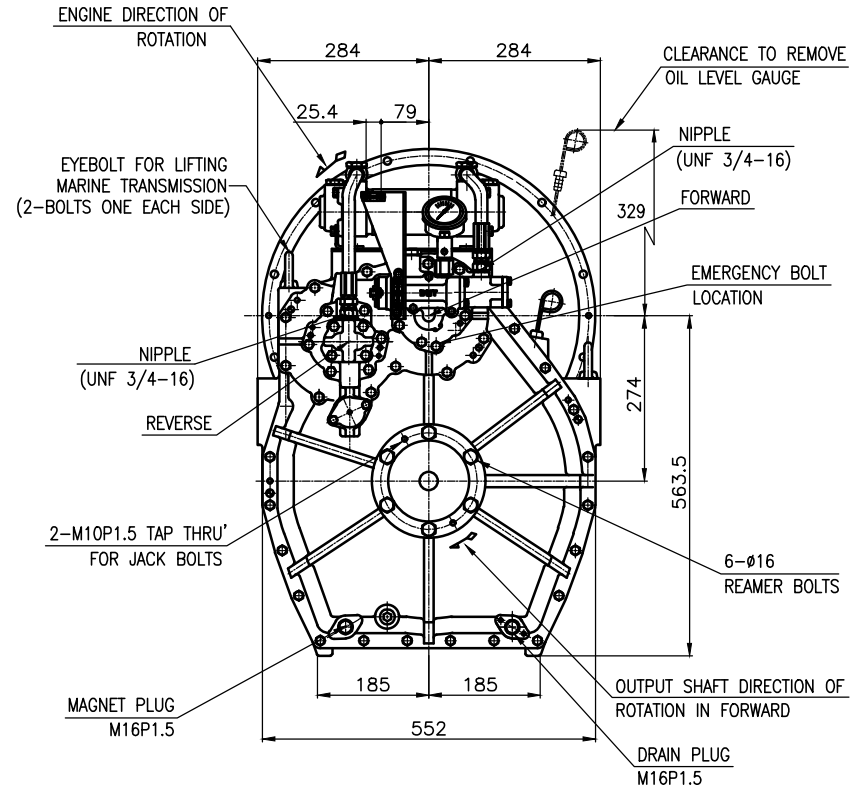
DMT 100HL MARINE TRANSMISSION SPECIFICATION	
GEAR RATIO	5.29, 5.95, 4.07, 4.50, 4.95
TOTAL WEIGHT	APPROX. 263 kg(DRY)
OIL CAPACITY	APPROX. 9.5L
OIL VISCOSITY	SAE # 30
OIL PRESSURE	1.96 ~ 2.54 MPa CLUTCH OIL
DIRECTION OF ROTATION	INPUT C.C.W VIEWED FROM THE STERN
IN FORWARD	OUTPUT C.W VIEWED FROM THE STERN
OIL CHANGE INTERVAL	THE FIRST 100HOURS OF INITIAL OPERATION AND EVERY 1000HOURS THEREAFTER
SHIFTING LIMIT	UNDER 50% OF THE RATED ENGINE SPEED
OIL COOLER	WATER FLOW 40 ~ 60L/min
	TEMPERATURE OF COOLING WATER MAX 32°C
OPERATING TORQUE OF SHIFTING LEVER	UNDER 2.94Nm



CLEARANCE TO REMOVE MAGNET PLUG



BRACKET DIMENSION



REMARK (HOT)

- 1.HOUSING: SAE#1
- 2.DRIVING RING: SAE 14"
- 3.COUPLING TYPE : DUAL STAGE
- 4.APPLICATION ENGINE : SATNDRD

공통공차	TOLERANCE ON	번호	PART NO.	명	PART NAME	개수	재질	구	비	REMARKS
분수	FRACTIONS	소수	DECIMALS	각도	ANGLES	DATE	SCALE	TYPE	DMT100HL	ORIGINAL DWG. NO.
±	±	±	±	±	±	2018.09.12	N/S	DMT100HL		
±	±	±	±	±	±	APPROVED BY	CHECKED BY	NAME	MARINE TRANSMISSION	
±	±	±	±	±	±	JK.Kim	TH.Cha	GH.Park	10000GHA~E-114DCH	000
±	±	±	±	±	±	D-I INDUSTRIAL		SIZE	A 8	CODE ID. NO.