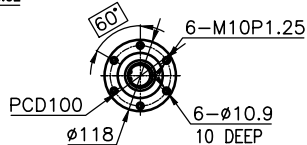
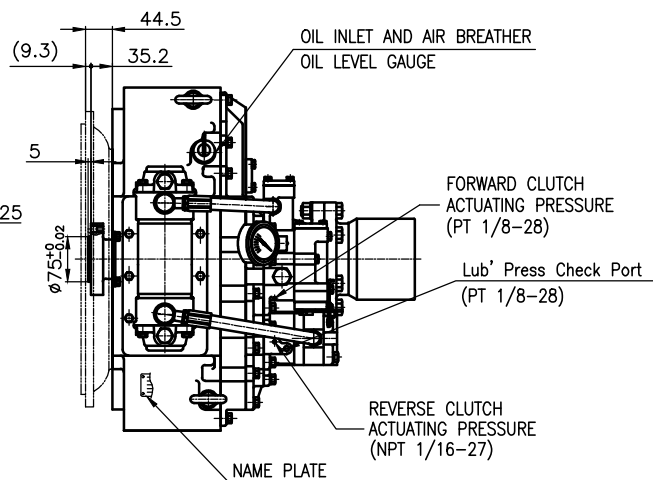


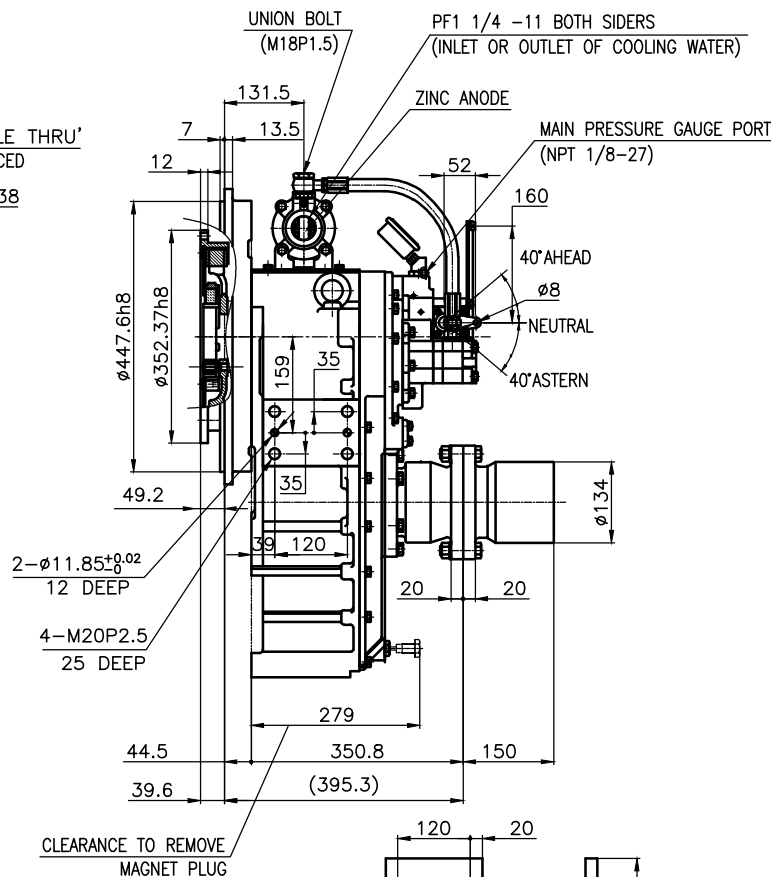
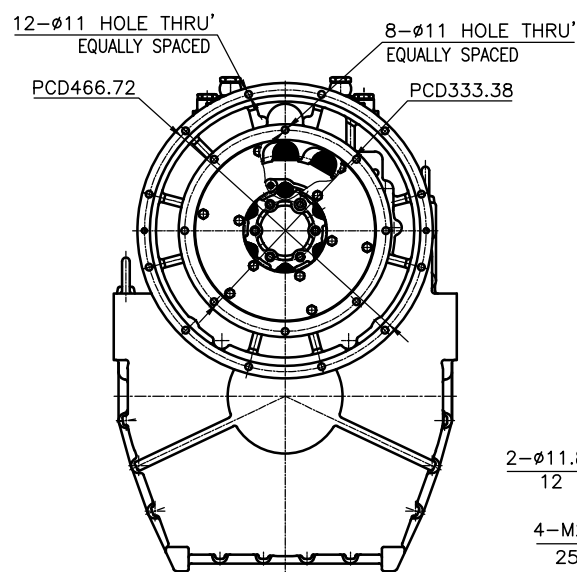
OUTPUT SHAFT COUPLING & PROPELLER COUPLING DIMENSION



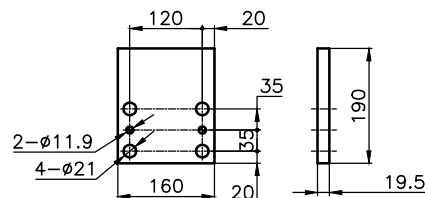
INPUT COUPLING DIMENSION



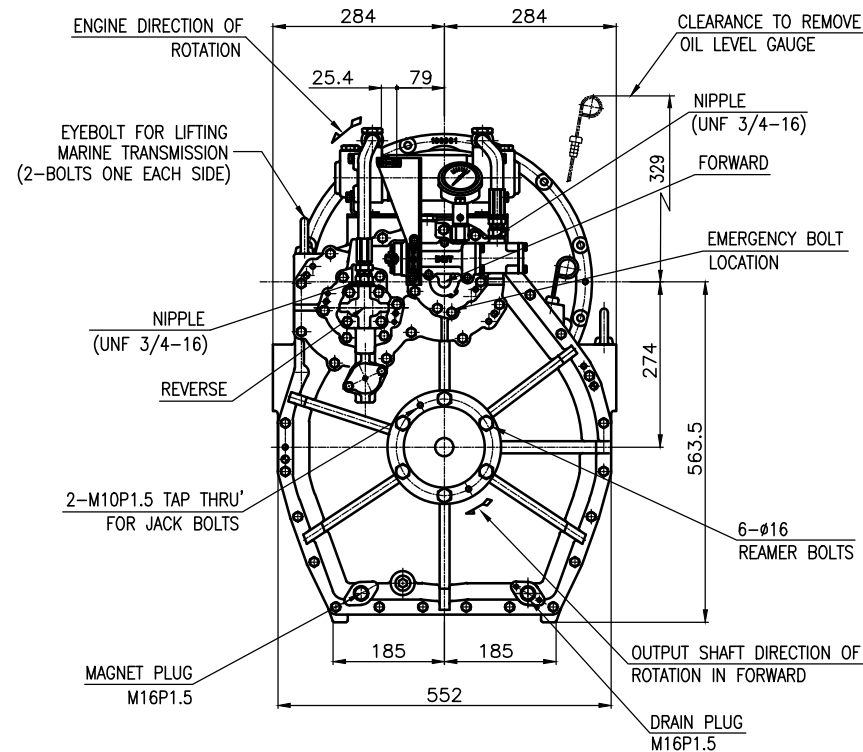
DMT 100HL MARINE TRANSMISSION SPECIFICATION			
GEAR RATIO	5.29, 5.95, 4.07, 4.50, 4.95		
TOTAL WEIGHT	APPROX. 263 kg(DRY)		
OIL CAPACITY	APPROX. 9.5L		
OIL VISCOSITY	SAE # 30		
OIL PRESSURE	1.96 ~ 2.54 MPa		CLUTCH OIL
DIRECTION OF ROTATION IN FORWARD	INPUT	C.C.W VIEWED FROM THE STERN	
	OUTPUT	C.W VIEWED FROM THE STERN	
OIL CHANGE INTERVAL	THE FIRST 100HOURS OF INITIAL OPERATION AND EVERY 1000HOURS THEREAFTER		
SHIFTING LIMIT	UNDER 50% OF THE RATED ENGINE SPEED		
OIL COOLER	WATER FLOW 40 ~ 60L/min		
	TEMPERATURE OF COOLING WATER		MAX 32°
OPERATING TORQUE OF SHIFTING LEVER			UNDER 2.94Nm



CLEARANCE TO REMOVE MAGNET PLUG




BRACKET DIMENSION



REMARK (HOT)

- 1.HOUSING: SAE#2
- 2.DRIVING RING: SAE 11.5"
- 3.COUPLING TYPE : DUAL STAGE
- 4.APPLICATION ENGINE : STANDARD

공통公差 TOLERANCE ON					번호 NO.		품 PART NO.		품 PART NAME		개수 Q'TY	재질 MATERIAL		규격 SIZE		비고 REMARKS	
분수 FRACTIONS    소수 DECIMALS    각도 ANGLES																원도 번호 ORIGINAL DWG. NO.	
±                    ±                    ±																	
일 번 공 차	참가공							작성 DATE 2018.09.12		척도 SCALE N/S		형식 TYPE		DMT100HL			
						승인 APPROVED BY JK.Kim		검토 CHECKED BY TH.Cha		제도 DRAWN GH.Park		품명 NAME MARINE TRANSMISSION					
												도번 DWG. NO. 10000GHA~E-2115DCH		개칭 (REV.) 000			
</																	