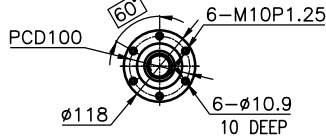
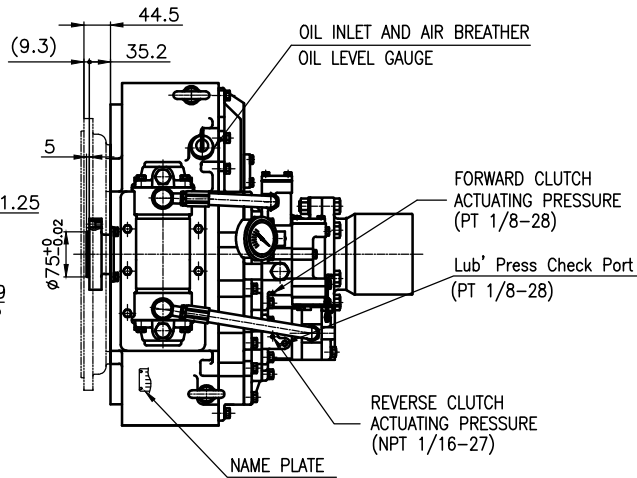


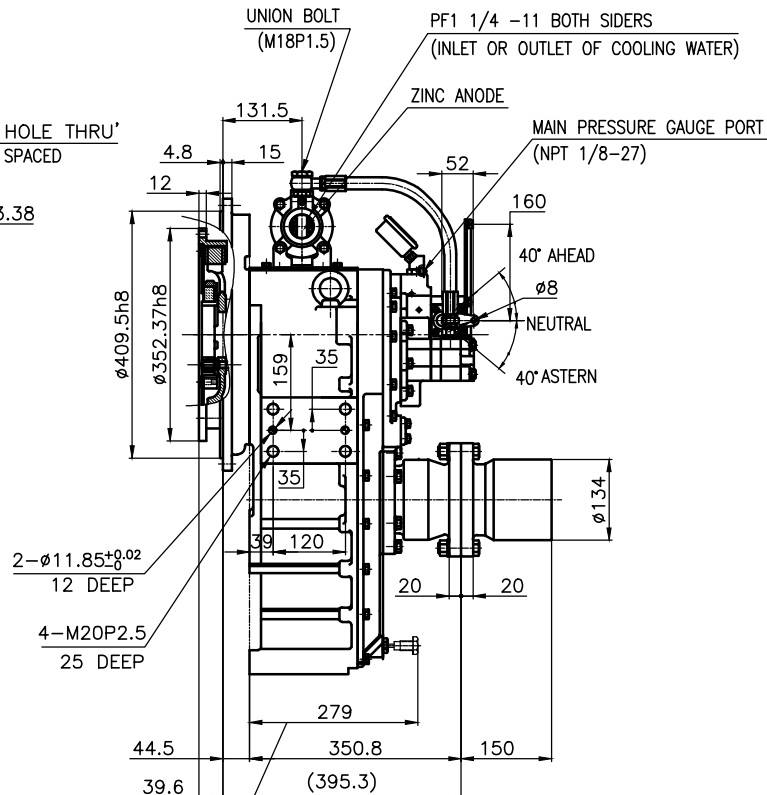
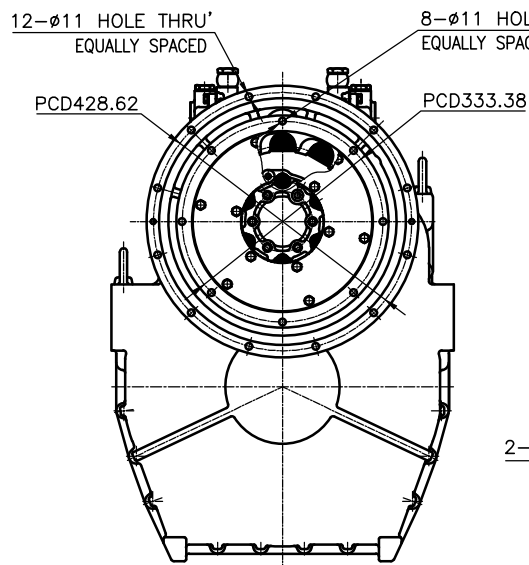
OUTPUT SHAFT COUPLING & PROPELLER COUPLING DIMENSION



INPUT COUPLING DIMENSION

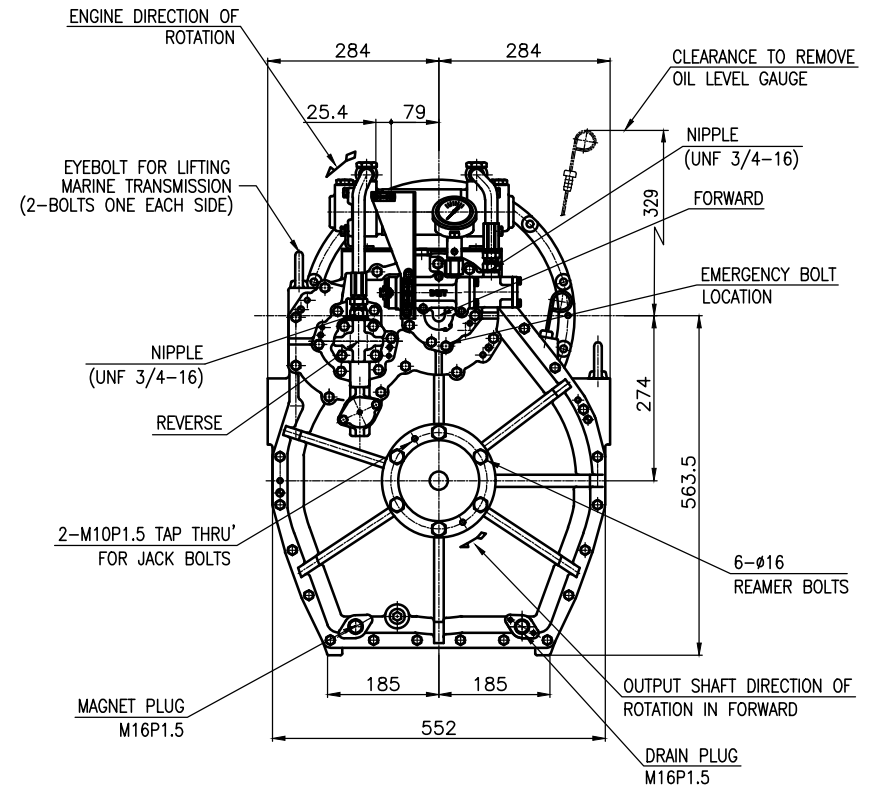


DMT 100HL MARINE TRANSMISSION SPECIFICATION	
GEAR RATIO	5.29, 5.95, 4.07, 4.50, 4.95
TOTAL WEIGHT	APPROX. 263 kg(DRY)
OIL CAPACITY	APPROX. 9.5L
OIL VISCOSITY	SAE # 30
OIL PRESSURE	1.96 ~ 2.54 MPa CLUTCH OIL
DIRECTION OF ROTATION IN FORWARD	INPUT C.C.W VIEWED FROM THE STERN OUTPUT C.W VIEWED FROM THE STERN
OIL CHANGE INTERVAL	THE FIRST 100HOURS OF INITIAL OPERATION AND EVERY 1000HOURS THEREAFTER
SHIFTING LIMIT	UNDER 50% OF THE RATED ENGINE SPEED
OIL COOLER	WATER FLOW 40 ~ 60L/min TEMPERATURE OF COOLING WATER MAX 32°C
OPERATING TORQUE OF SHIFTING LEVER	UNDER 2.94Nm



CLEARANCE TO REMOVE MAGNET PLUG

BRACKET DIMENSION



REMARK (HOT)

- HOUSING: SAE#3
- DRIVING RING: SAE 11.5"
- COUPLING TYPE : DUAL STAGE
- APPLICATION ENGINE : STANDARD

公差	TOLERANCE ON	번호	PART NO.	명	PART NAME	개수	Q'TY	재질	MATERIAL	구경	SIZE	비고	REMARKS			
분수	FRACTIONS	소수	DECIMALS	각도	ANGLES	재료	MATERIAL	형식	TYPE	기종	DMT100HL	원도	ORIGINAL DWG. NO.			
±	±	±	±	°	°	인	APPROVED BY	검	CHECKED BY	도	SCALE	설	DESIGNED			
1	1	0.3	0.1	0.05	2016.09.12	N/S	JK.Kim	TH.Cha	GH.Park	MARINE TRANSMISSION		10000GHA~E-3115DCH	000			
4	16	±0.5	±0.2	±0.07												
16	63	±0.7	±0.3	±0.1												
63	250	±1.2	±0.5	±0.2												
250	1000	±2.0	±0.8	±0.3												
D-I INDUSTRIAL												크기	SIZE	A 3	코드 번호	CODE ID. NO.