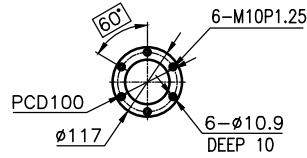
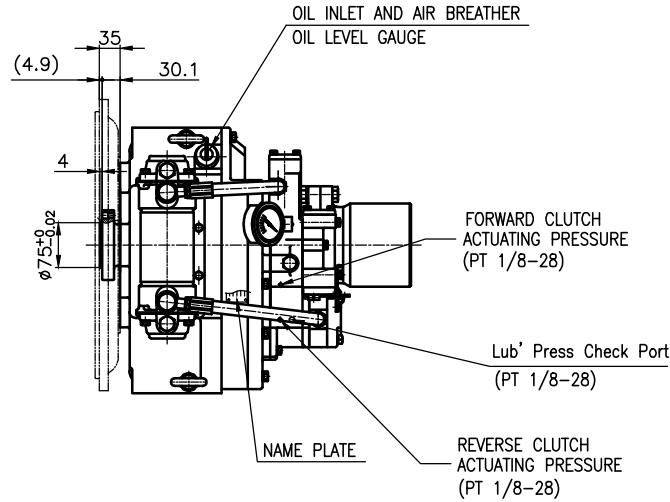


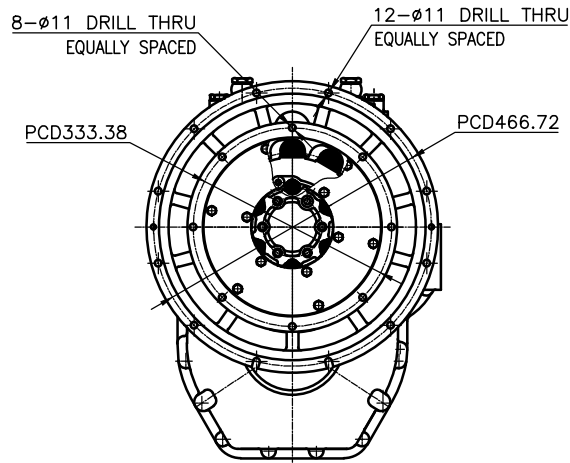
OUTPUT SHAFT COUPLING & PROPELLER COUPLING DIMENSION



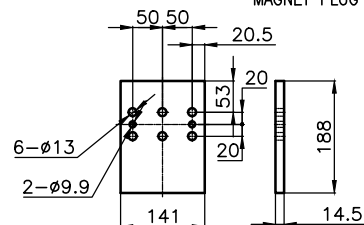
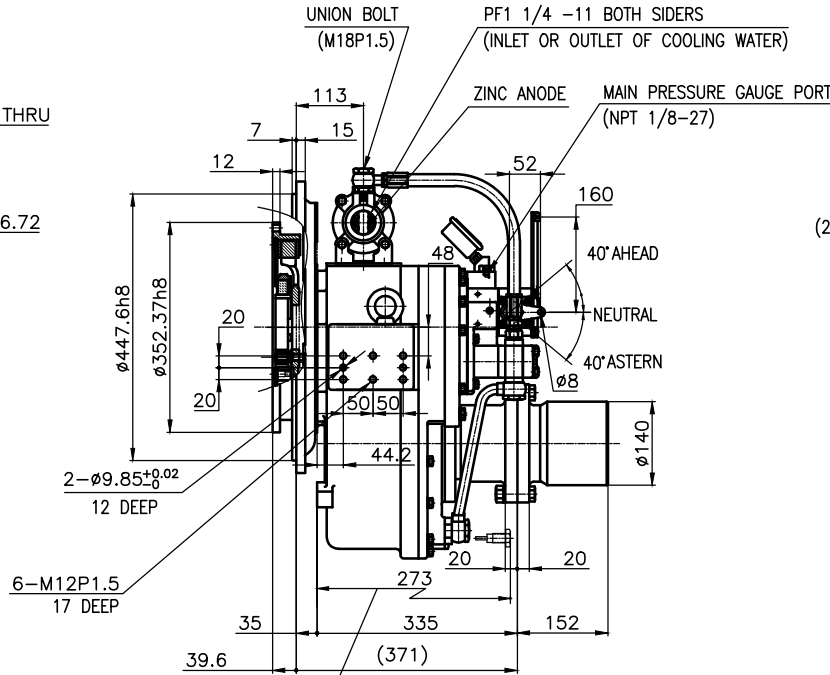
INPUT COUPLING DIMENSION



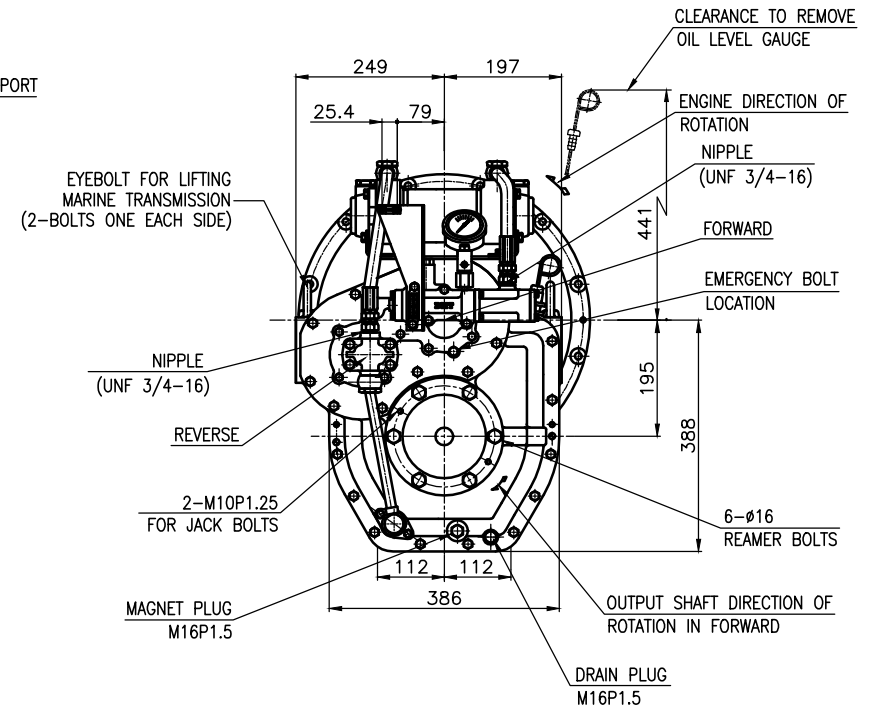
DMT 110A MARINE TRANSMISSION SPECIFICATION			
GEAR RATIO	1.77	2.09	2.42 2.82 3.19 3.81
TOTAL WEIGHT	APPROX. 212 kg(DRY)		
OIL CAPACITY	APPROX. 4 L		
OIL VISCOSITY	SAE # 30		
OIL PRESSURE	1.96 ~ 2.54 MPa	CLUTCH OIL	
DIRECTION OF ROTATION	INPUT	C.C.W VIEWED FROM THE STERN	
	OUTPUT	C.W VIEWED FROM THE STERN	
OIL CHANGE INTERVAL	THE FIRST 100HOURS OF INITIAL OPERATION AND EVERY 1000HOURS THEREAFTER		
SHIFTING LIMIT	UNDER 50% OF THE RATED ENGINE SPEED		
OIL COOLER	WATER FLOW 40 ~ 60L/min		
	TEMPERATURE OF COOLING WATER MAX 32°C		
OPERATING TORQUE OF SHIFTING LEVER	UNDER 2.94Nm		



REMARK (HOT)  
 1.HOUSING: SAE#2  
 2.DRIVING RING: SAE 11.5"  
 3.COUPLING TYPE : DUAL STAGE  
 4.APPLICATION ENGINE : STANDARD



BRACKET DIMENSION



공용공자	TOLERANCE ON	번호	PART NO.	PART NAME	개수	재질	규격	비고
FRACTIONS	DECIMALS	각도	MATERIAL		TYPE	REMARKS		
±	±	±	DATE		SCALE	DMT110A ORIGINAL DWG. NO.		
±	±	±	2018.08.12 <td>N/S <td colspan="3">MARINE TRANSMISSION </td></td>		N/S <td colspan="3">MARINE TRANSMISSION </td>	MARINE TRANSMISSION		
1	0.3	0.1	± 0.05	APPROVED BY	검도	제도	설계	NAME
4	0.5	0.2	± 0.07	JK.Kim	TH.Cha	GH.Park		11000GA~E-2115DCH
16	0.7	0.3	± 0.1					000
63	1.2	0.5	± 0.2					
250	2.0	0.8	± 0.3					