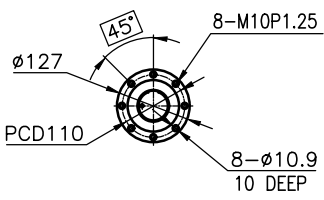
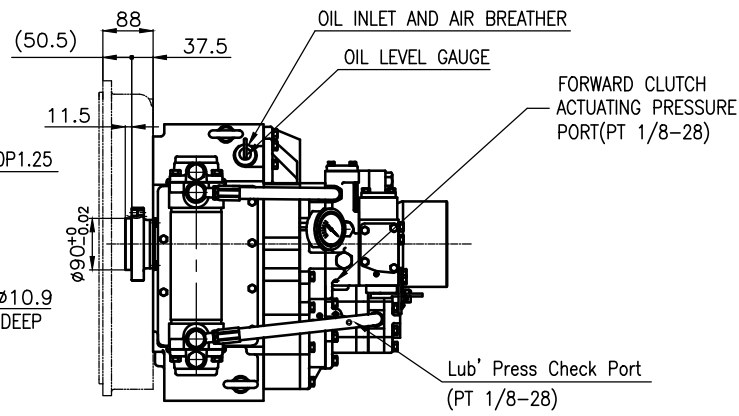


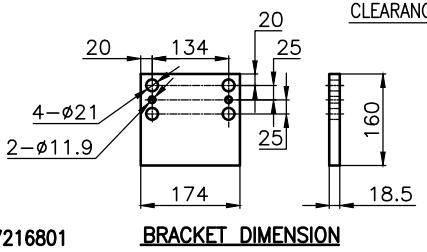
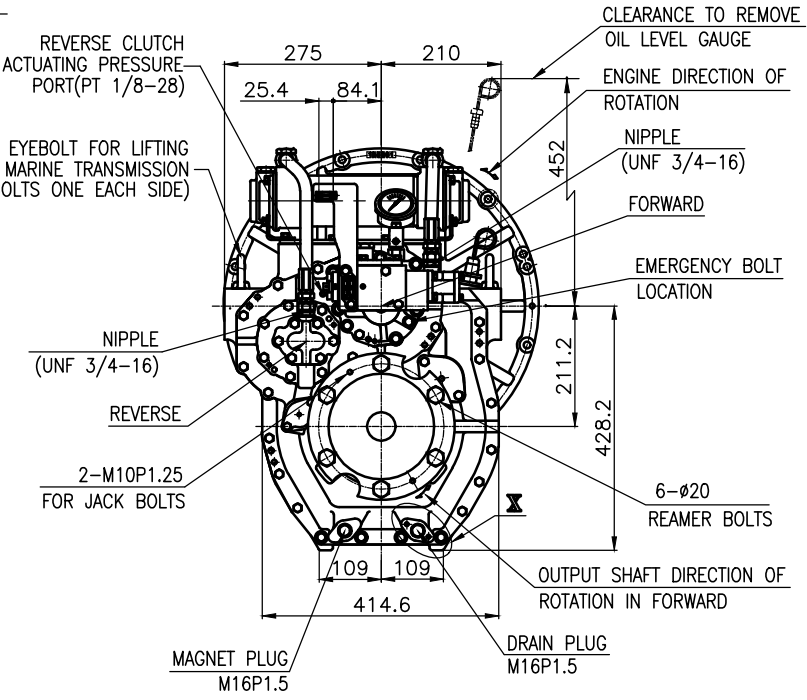
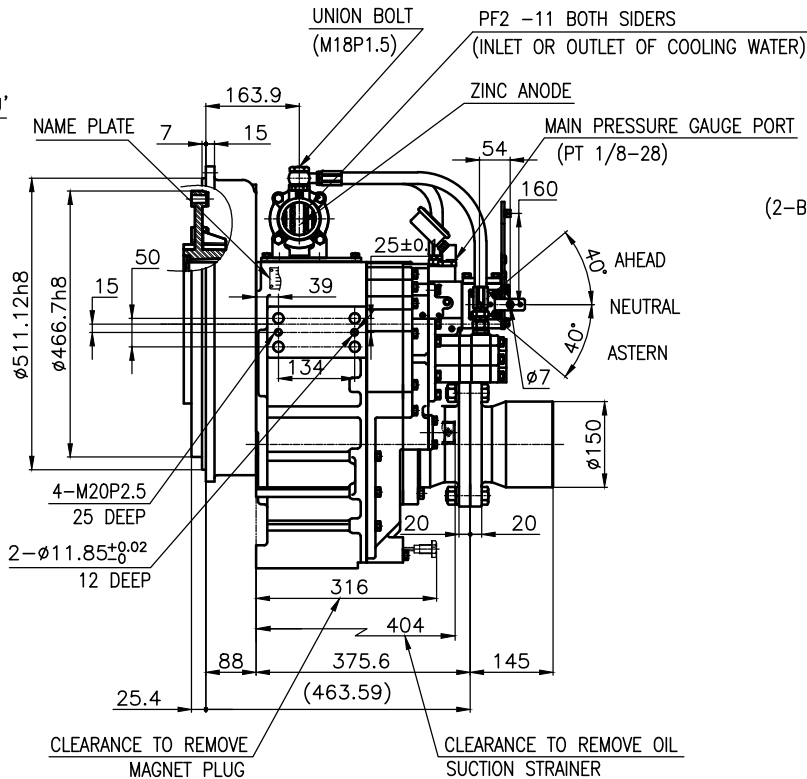
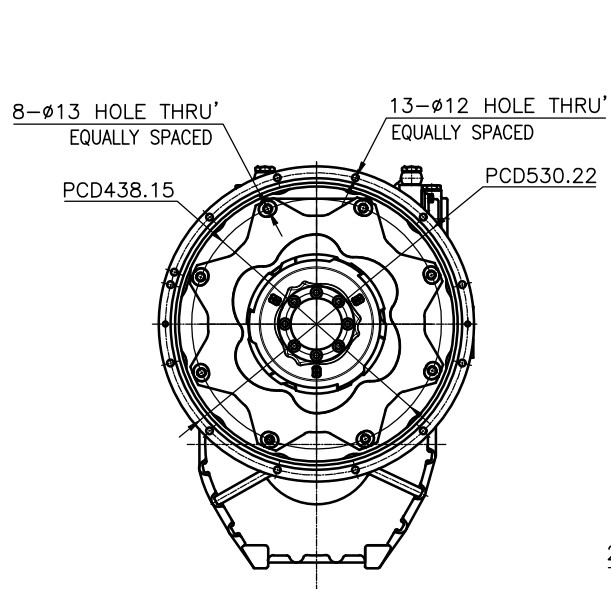
OUTPUT SHAFT COUPLING & PROPELLER COUPLING DIMENSION



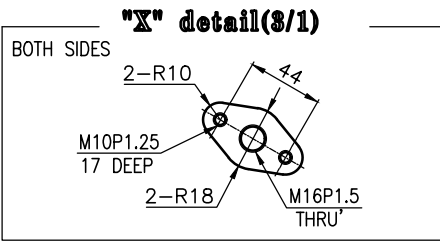
INPUT COUPLING DIMENSION



DMT 150H MARINE TRANSMISSION SPECIFICATION			
GEAR RATIO	1.83, 2.09, 2.51, 3.08, 3.43		
TOTAL WEIGHT	APPROX. 287 kg(DRY)		
OIL CAPACITY	APPROX. 5.5 L		
OIL VISCOSITY	SAE # 30		
OIL PRESSURE	1.96 ~ 2.35 MPa	CLUTCH OIL	
DIRECTION OF ROTATION	INPUT	C.C.W VIEWED FROM THE STERN	
IN FORWARD	OUTPUT	C.W VIEWED FROM THE STERN	
OIL CHANGE INTERVAL	THE FIRST 100HOURS OF INITIAL OPERATION AND EVERY 1000HOURS THEREAFTER		
SHIFTING LIMIT	UNDER 50% OF THE RATED ENGINE SPEED		
OIL COOLER	WATER FLOW 40 ~ 60L/min		TEMPERATURE OF COOLING WATER MAX 32°C
	OPERATING TORQUE OF SHIFTING LEVER		



BRACKET DIMENSION



REMARK (HOT)  
 1.HOUSING: SAE#1  
 2.DRIVING RING: SAE 14"  
 3.COUPLING TYPE  
 -CENTA Flex Coupling : 77216801  
 4.APPLICATION ENGINE : STANDARD

TOLERANCE ON				PART NO.		PART NAME		Q'TY		MATERIAL		SIZE		REMARKS		
FRACTIONS	DECIMALS	ANGLES	±	±	±	±	±	±	±	±	±	±	±	±	±	
1/16	0.0625	±0.5	±0.1	±0.05	DMT150H		TYPE		DMT150H		ORIGINAL DWG. NO.		000		REVISION	
1/32	0.03125	±0.25	±0.05	±0.025	MARINE TRANSMISSION		NAME		MARINE TRANSMISSION		DWG. NO.		151000A~E-114CFRH		계량 (REV.)	
1/64	0.015625	±0.125	±0.025	±0.0125	APPROVED BY		CHECKED BY		DRAWN		DESIGNED		JK.Kim TH.Cha GH.Park		000	
1/128	0.0078125	±0.0625	±0.0125	±0.0078125	D-I INDUSTRIAL		SIZE		A 8		CODE ID. NO.					