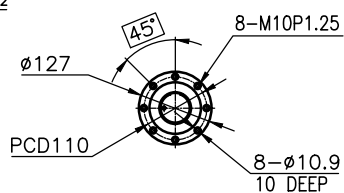
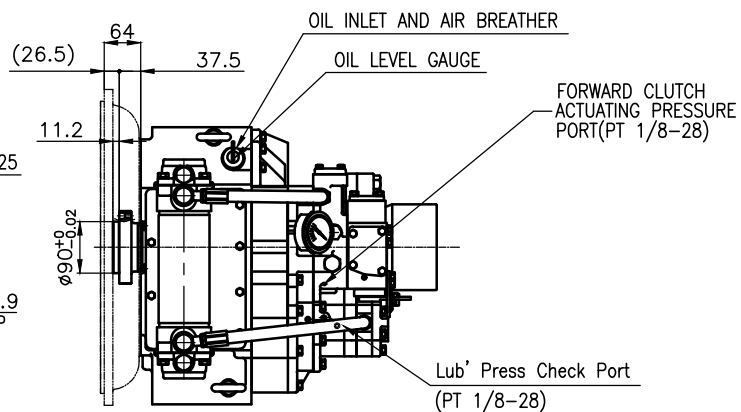


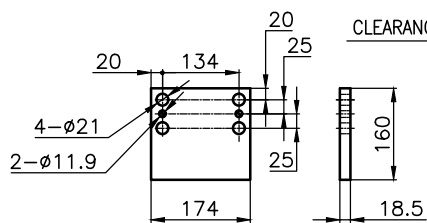
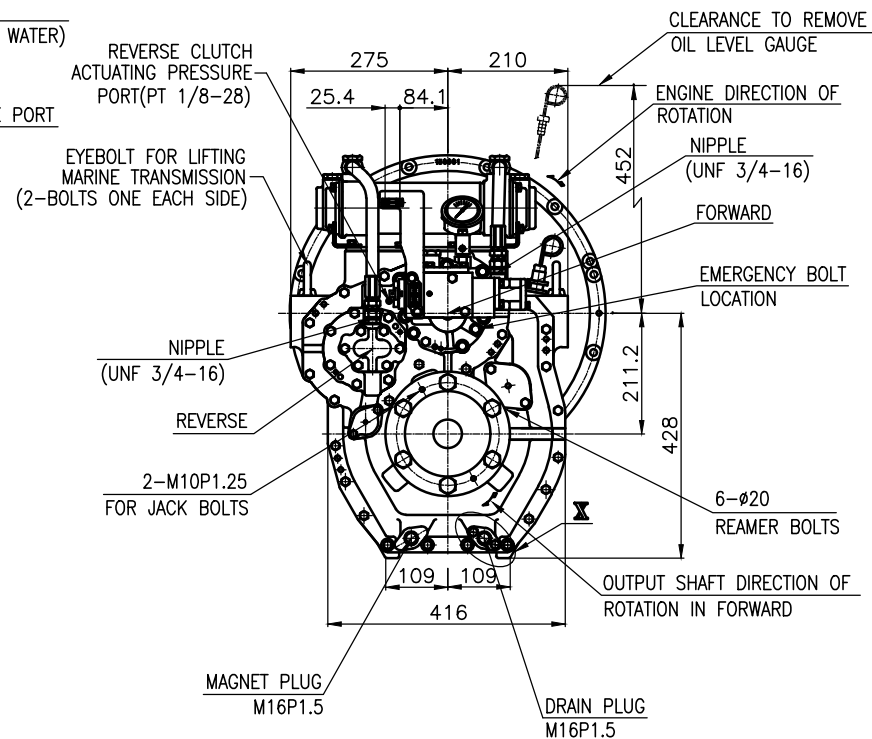
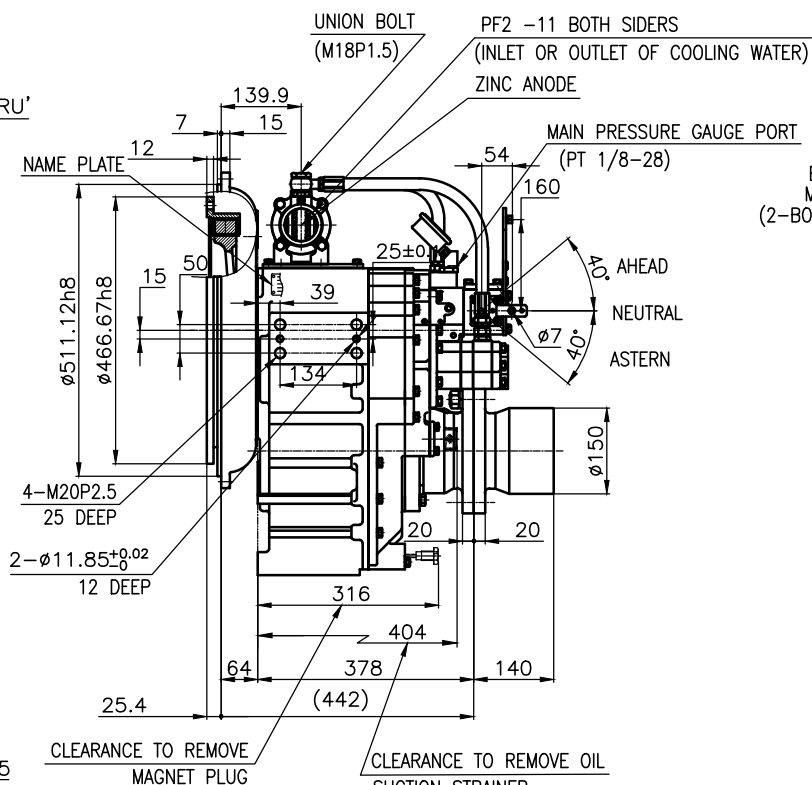
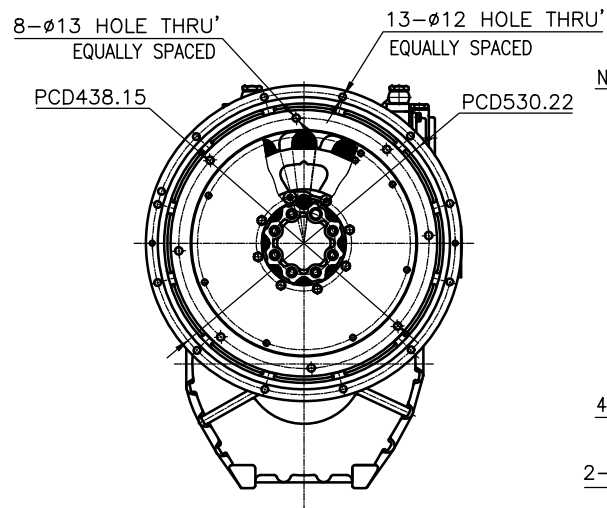
### OUTPUT SHAFT COUPLING & PROPELLER COUPLING DIMENSION



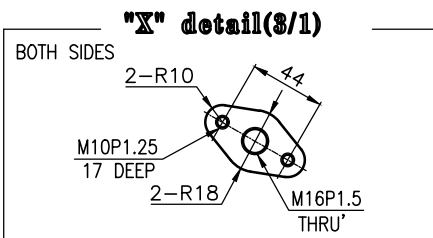
## INPUT COUPLING DIMENSION



DMT 150H MARINE TRANSMISSION SPECIFICATION			
GEAR RATIO	1.83, 2.09, 2.51, 3.08, 3.43		
TOTAL WEIGHT	APPROX. 287 kg(DRY)		
OIL CAPACITY	APPROX. 5.5 L		
OIL VISCOSITY	SAE # 30		
OIL PRESSURE	1.96 ~ 2.35 MPa		CLUTCH OIL
DIRECTION OF ROTATION IN FORWARD	INPUT	C.C.W VIEWED FROM THE STERN	
	OUTPUT	C.W VIEWED FROM THE STERN	
OIL CHANGE INTERVAL	THE FIRST 100HOURS OF INITIAL OPERATION		
	AND EVERY 1000HOURS THEREAFTER		
SHIFTING LIMIT	UNDER 50% OF THE RATED ENGINE SPEED		
OIL COOLER	WATER FLOW 40 ~ 60L/min		
	TEMPERATURE OF COOLING WATER		MAX 32℃
OPERATING TORQUE OF SHIFTING LEVER			UNDER 2.94Nm



### BRACKET DIMENSION



**"X" detail(3/1)**

BOTH SIDES

2-R10

M10P1.25

P

2-R18

M16P1.5

THRU'

## REMARK (HOT)

- 1.HOUSING: SAE#1  
2.DRIVING RING: SAE 14"  
3.COUPLING TYPE : DUAL STAGE  
4.APPLICATION ENGINE : STANDARD

공통公差 TOLERANCE ON					번호 NO.		품 PART NO.		용 PART NAME		개수 Q'TY		재 MATERIAL		규 SIZE		비고 REMARKS	
분수 FRACTIONS 소수 DECIMALS 각도 ANGLES ± ± ±							작성 DATE 2018.09.12		척도 SCALE 1/1		형 식 TYPE		DMT150H		원 도 번호 ORIGINAL DWG. NO.			
							승 인 APPROVED BY JK.Kim		검 토 CHECKED BY TH.Cha									
일 변 공 차										품 명 NAME		MARINE TRANSMISSION						
구 분 1호차 4 16 16 63 63 250 250 1000					절 차 가 공 조 공 총 공 정 공					도 번 DWG. NO.		15100GA~E-114DCH					개정 (REV.) 000	
										크 기 SIZE		A 3		코 드 번 호 CODE ID. NO.				
					D-I INDUSTRIAL													