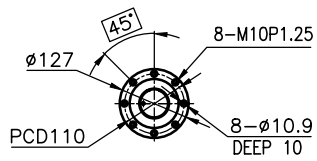
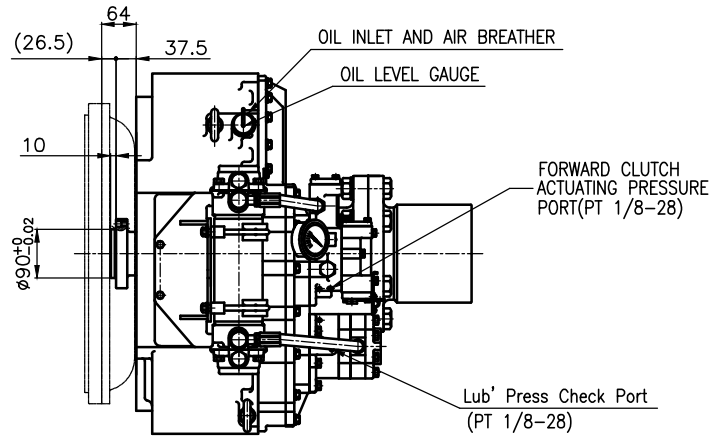


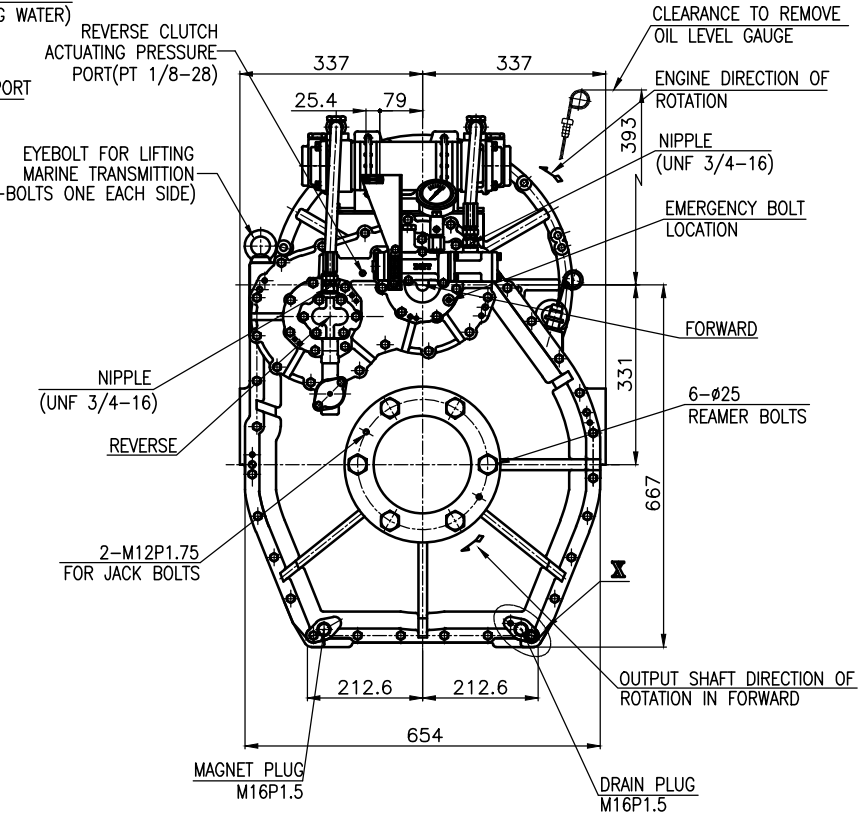
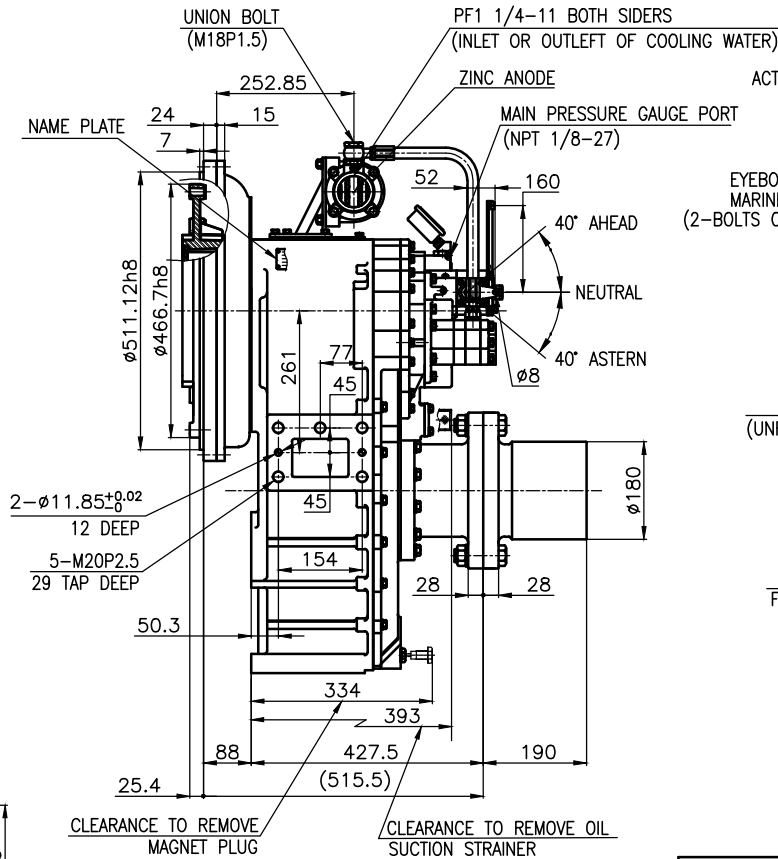
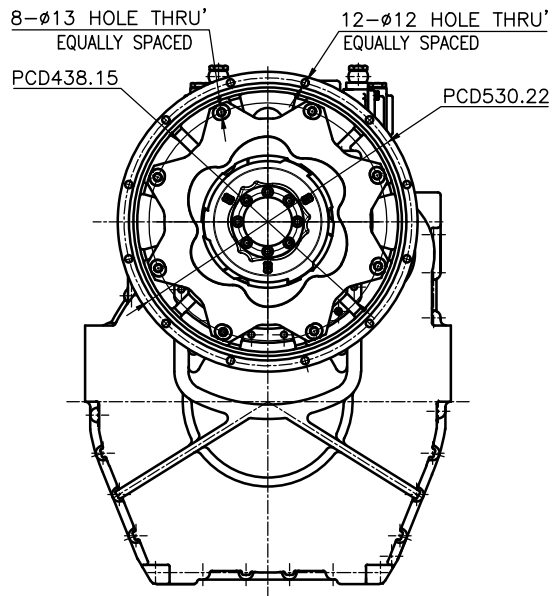
OUTPUT SHAFT COUPLING & PROPELLER COUPLING DIMENSION



INPUT COUPLING DIMENSION

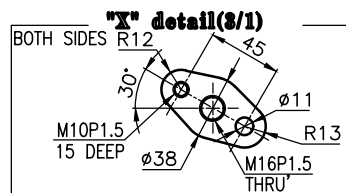
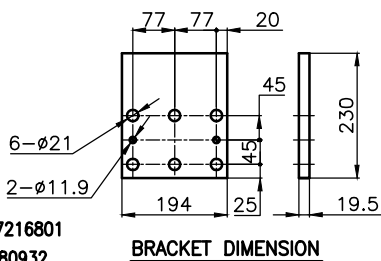


DMT180HL MARINE TRANSMISSION SPECIFICATION			
GEAR RATIO	5.15, 5.96		
TOTAL WEIGHT	APPROX. 475 Kg(DRY)		
OIL CAPACITY	APPROX. 18 L		
OIL VISCOSITY	SAE # 30		
OIL PRESSURE	1.96 ~ 2.54 MPa	CLUTCH OIL	
DIRECTION OF ROTATION IN FORWARD	INPUT	C.C.W VIEWED FROM THE STERN	
	OUTPUT	C.W VIEWED FROM THE STERN	
OIL CHANGE INTERVAL	THE FIRST 100HOURS OF INITIAL OPERATION AND EVERY 1000HOURS THEREAFTER		
SHIFTING LIMIT	UNDER 50% OF THE RATED ENGINE SPEED		
OIL COOLER	WATER FLOW		40 ~ 60 L/m
	TEMPERATURE OF COOLING WATER		MAX 32°C
OPERATING TORQUE OF SHIFTING LEVER	UNDER 2.94Nm		



REMARK (HOT)

- HOUSING: SAE#1
- DRIVING RING: SAE 14"
- COUPLING TYPE
-CENTA Flex Coupling : 77216801
-DUMMY(for HOUSING) : 180932
- APPLICATION ENGINE : STANDARD



공용공차	TOLERANCE ON	번호	PART NO.	명	PART NAME	개수	재질	구	비	고
분수	소수	각도	MATERIAL			형식	TYPE	SCALE	TYPE	REMARKS
±	±	±	DATE			DATE	SCALE	N/S	DMT180HL	ORIGINAL DWG. NO.
±	±	±	2018.08.12			2018.08.12	N/S			
±	±	±	APPROVED BY			CHECKED BY	DESIGNED BY	NAME	MARINE TRANSMISSION	
±	±	±	JK.Kim			TH.Cha	GH.Park	NAME		
±	±	±	DWG. NO.			18000CHA~B-114CFRH		REV.	000	
±	±	±	D-I INDUSTRIAL			SIZE	A 8	CODE ID. NO.		