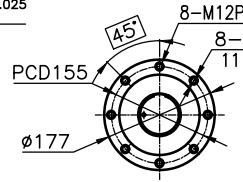
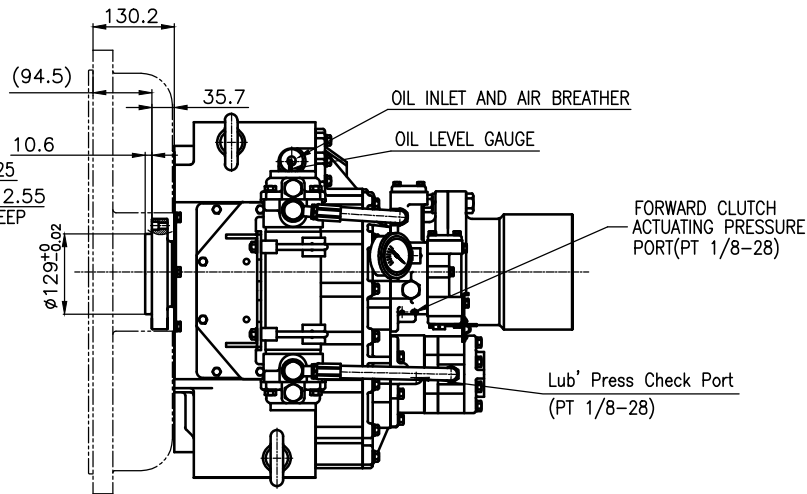


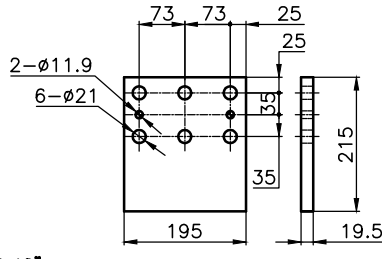
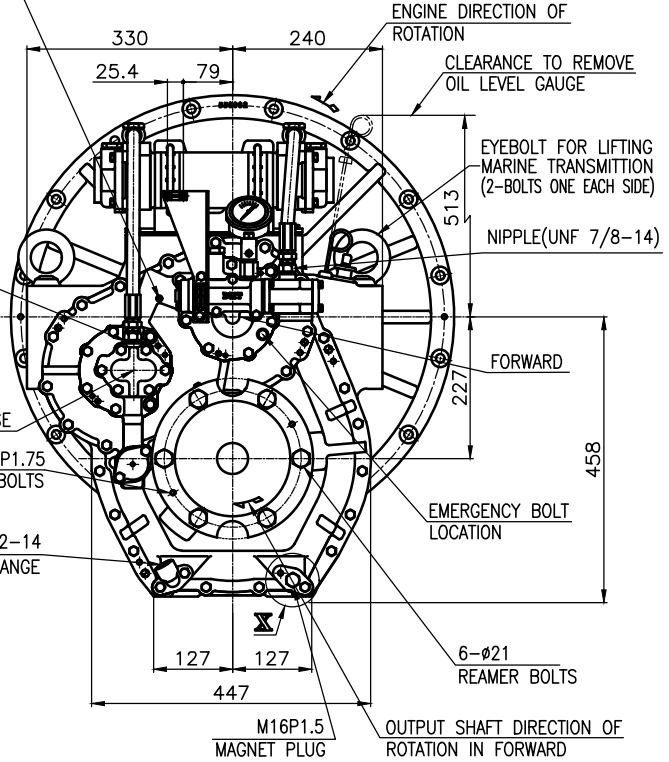
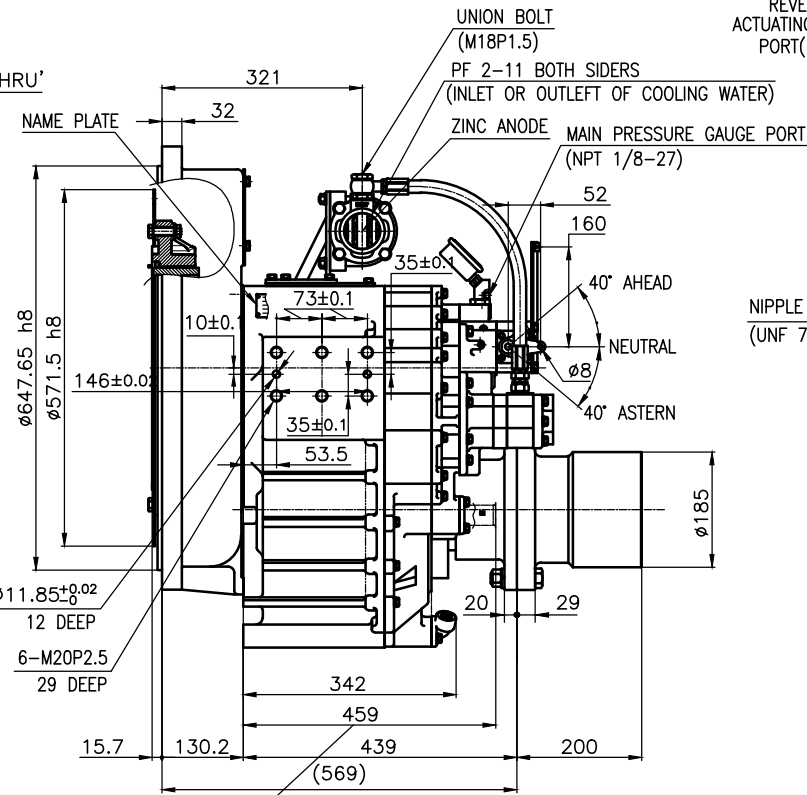
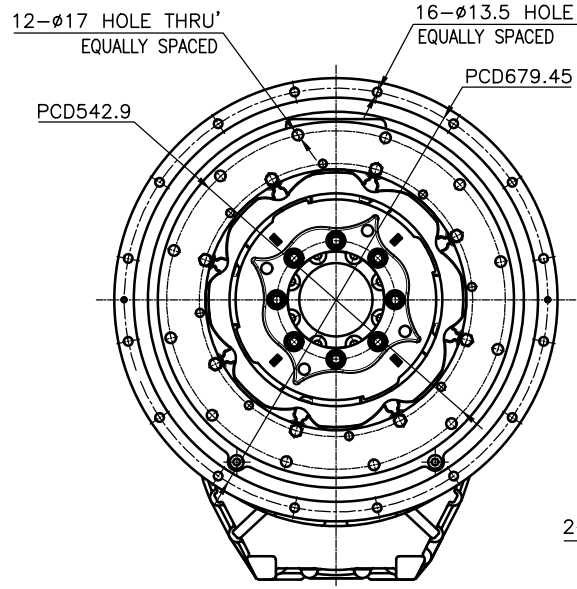
OUTPUT SHAFT COUPLING & PROPELLER COUPLING DIMENSION



INPUT COUPLING DIMENSION



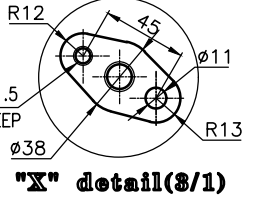
DMT240H MARINE TRANSMISSION SPECIFICATION	
GEAR RATIO	1.50 , 1.97 , 2.44 , 2.93 , 3.40
TOTAL WEIGHT	APPROX. 400 Kg(DRY)
OIL CAPACITY	APPROX. 8L
OIL VISCOSITY	SAE # 30
OIL PRESSURE	1.96 ~ 2.54 MPa CLUTCH OIL
DIRECTION OF ROTATION	INPUT C.C.W VIEWED FROM THE STERN
IN FORWARD	OUTPUT C.W VIEWED FROM THE STERN
OIL CHANGE INTERVAL	THE FIRST 100HOURS OF INITIAL OPERATION AND EVERY 1000HOURS THEREAFTER
SHIFTING LIMIT	UNDER 50% OF THE RATED ENGINE SPEED
OIL COOLER	WATER FLOW 40 ~ 60 L/m TEMPERATURE OF COOLING WATER MAX 32°C
OPERATING TORQUE OF SHIFTING LEVER	UNDER 2.94Nm



BRACKET DIMENSION

- REMARK
- 1.HOUSING: SAE#0
 - 2.DRIVING RING: SAE 18"
 - 3.COUPLING TYPE
CENTA Flex Coupling (77268802)

CLEARANCE TO REMOVE OIL SUCTION STRAINER



"X" detail(3/1)

TOLERANCE ON				APPROVED BY				REMARKS			
FRACTIONS	DECIMALS	ANGLES	DATE	CHECKED BY	SCALE	TYPE	NAME	DWG. NO.	REV.	REMARKS	ORIGINAL DWG. NO.
± 0.1	± 0.05	± 0.05	2018.09.12	JK.Kim	1/1	DMT240H	MARINE TRANSMISSION	24000GA~E-018CFR	000		
± 0.3	± 0.1	± 0.05		TH.Cha							
± 0.5	± 0.2	± 0.07		GH.Park							
± 0.7	± 0.3	± 0.1									
± 1.2	± 0.5	± 0.2									
± 2.0	± 0.8	± 0.3									

D-I INDUSTRIAL