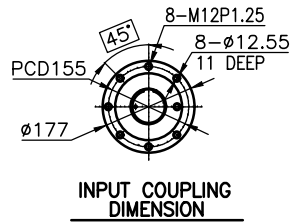
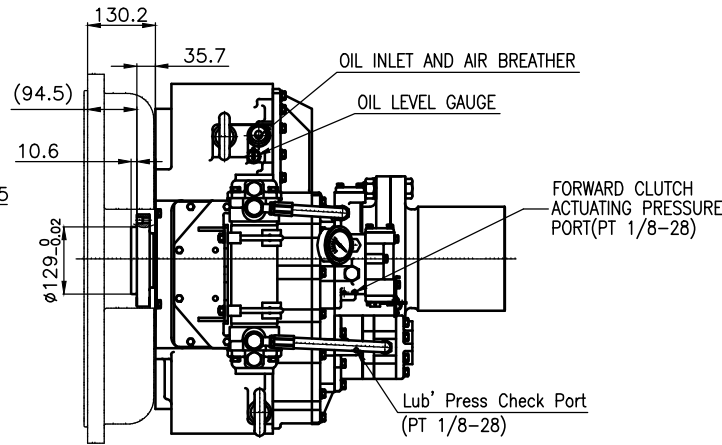


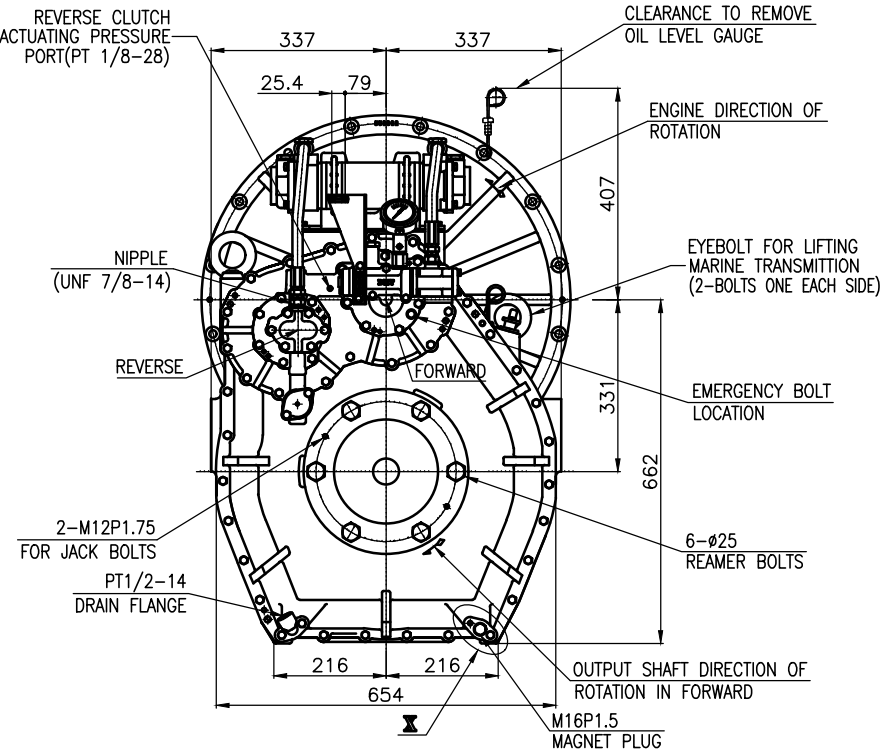
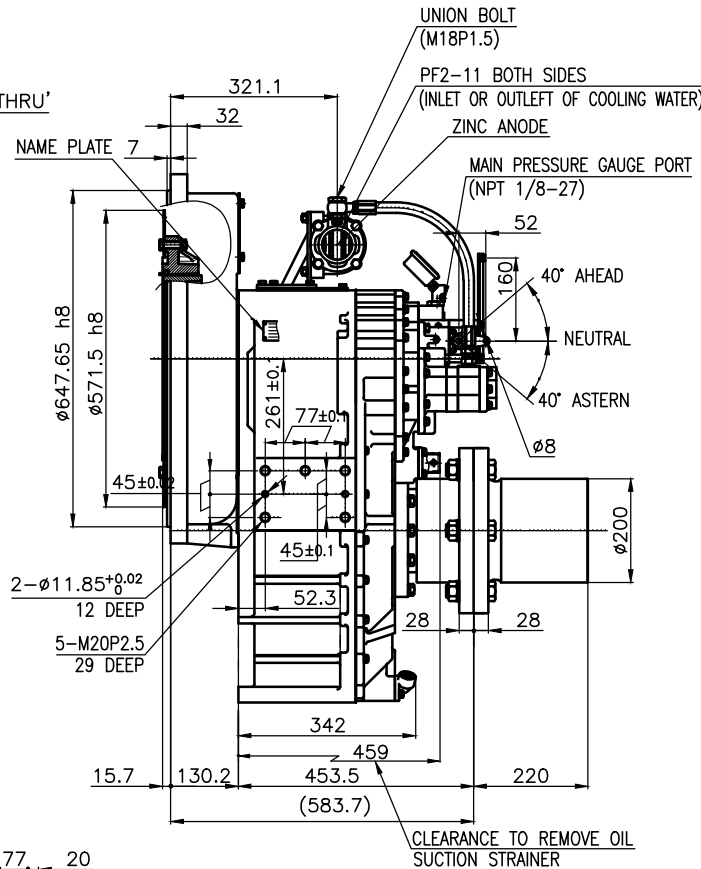
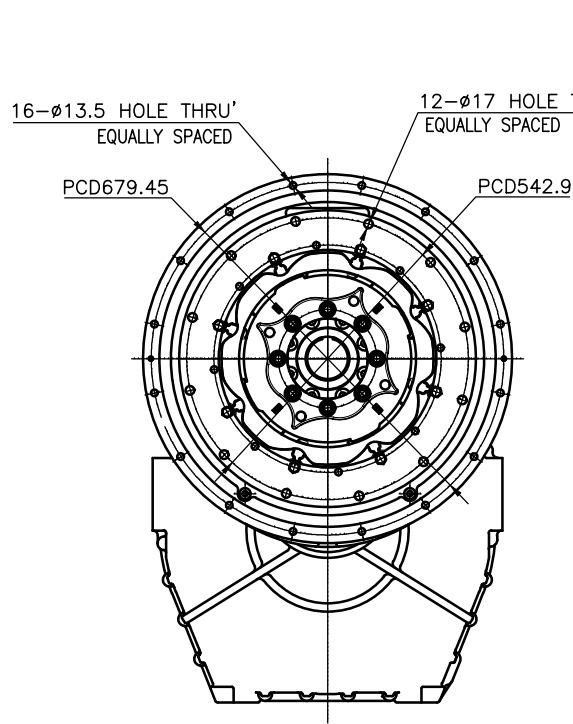
OUTPUT SHAFT COUPLING & PROPELLER COUPLING DIMENSION



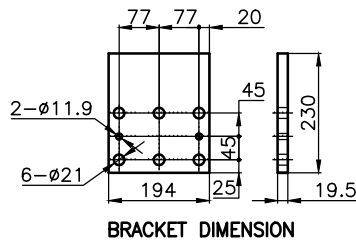
INPUT COUPLING DIMENSION



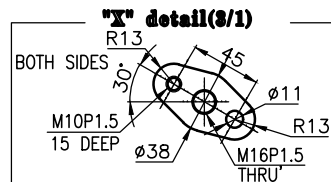
DMT260HL MARINE TRANSMISSION SPECIFICATION			
GEAR RATIO	3.53, 4.08, 4.52, 5.04		
TOTAL WEIGHT	APPROX. 640 Kg(DRY)		
OIL CAPACITY	APPROX. 19 L		
OIL VISCOSITY	SAE #30		
OIL PRESSURE	1.96 ~ 2.54 MPa	CLUTCH OIL	
DIRECTION OF ROTATION	INPUT	C.C.W VIEWED FROM THE STERN	
IN FORWARD	OUTPUT	C.W VIEWED FROM THE STERN	
OIL CHANGE INTERVAL	THE FIRST 100HOURS OF INITIAL OPERATION AND EVERY 1000HOURS THEREAFTER		
SHIFTING LIMIT	UNDER 50% OF THE RATED ENGINE SPEED		
OIL COOLER	WATER FLOW		60 ~ 80 L/min
	TEMPERATURE OF COOLING WATER		MAX 32°C
OPERATING TORQUE OF SHIFTING LEVER	UNDER 2.94Nm		



REMARK  
1.HOUSING: SAE#0  
2.DRIVING RING: SAE 18"  
3.COUPLING TYPE  
CENTA Flex Coupling (77268802)



BRACKET DIMENSION



공용공차	TOLERANCE ON	번호	PART NO.	명	개수	재질	규격	비고
분수	소수	각도	MATERIAL		TYPE	REMARKS		
±	±	±	2018.09.12		SCALE	ORIGINAL DWG. NO.		
±	±	±	APPROVED BY	CHECKED BY	SCALE	TYPE		
±	±	±	JK.Kim TH.Cha GH.Park		SCALE	MARINE TRANSMISSION		
±	±	±	DWG. NO.		SCALE	26000GA~C-018CFR		
±	±	±	D-I INDUSTRIAL		SCALE	000		
±	±	±	SIZE		SCALE	CODE ID. NO.		
±0.05	±0.1	±0.05			1/1	DMT260HL		
±0.07	±0.2	±0.07						
±0.1	±0.3	±0.1						
±0.2	±0.5	±0.2						
±0.3	±1.0	±0.3						
±0.5	±2.0	±0.5						
±0.8	±5.0	±0.8						