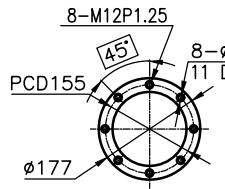
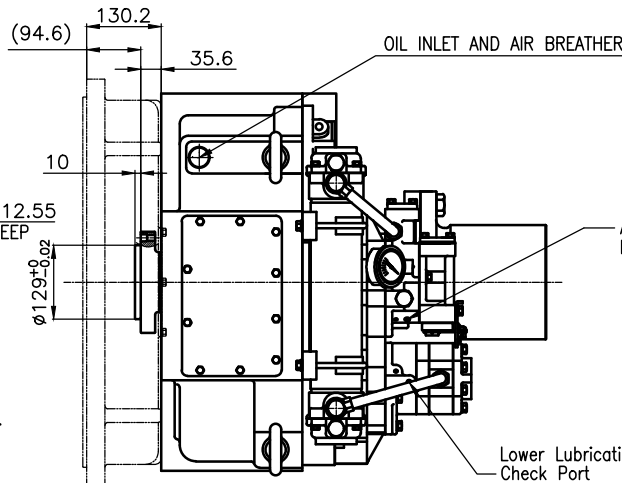


OUTPUT SHAFT COUPLING & PROPELLER COUPLING DIMENSION



INPUT COUPLING DIMENSION

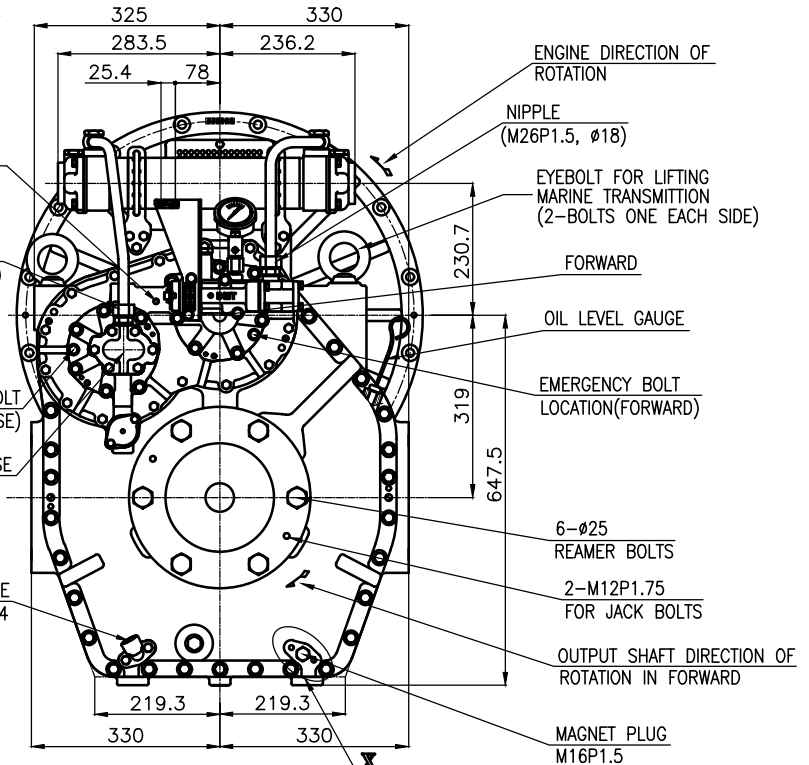
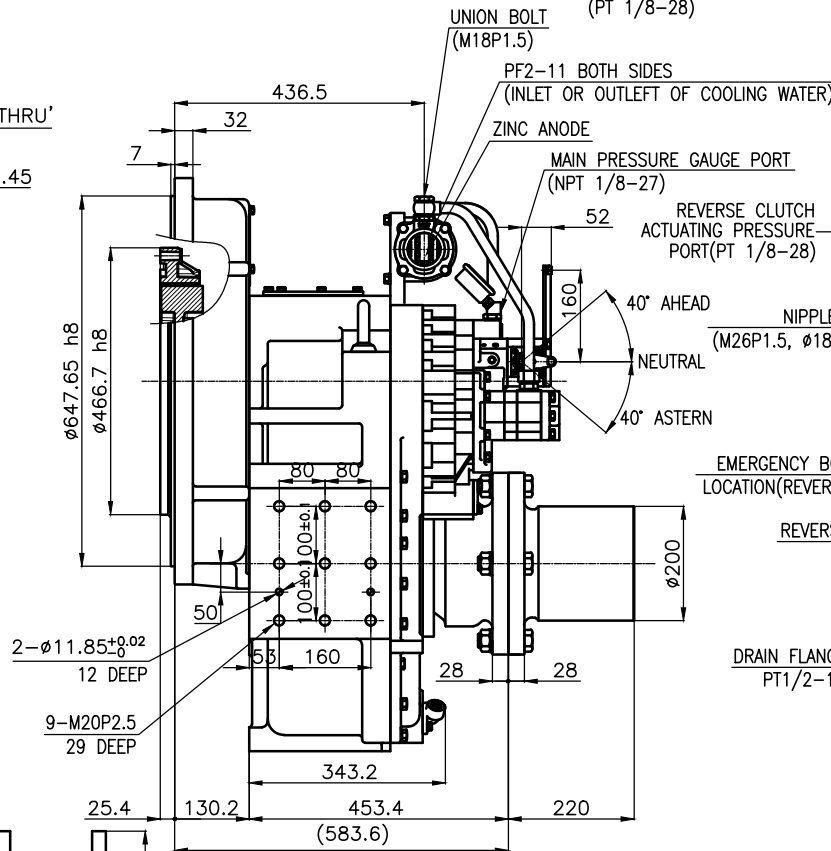
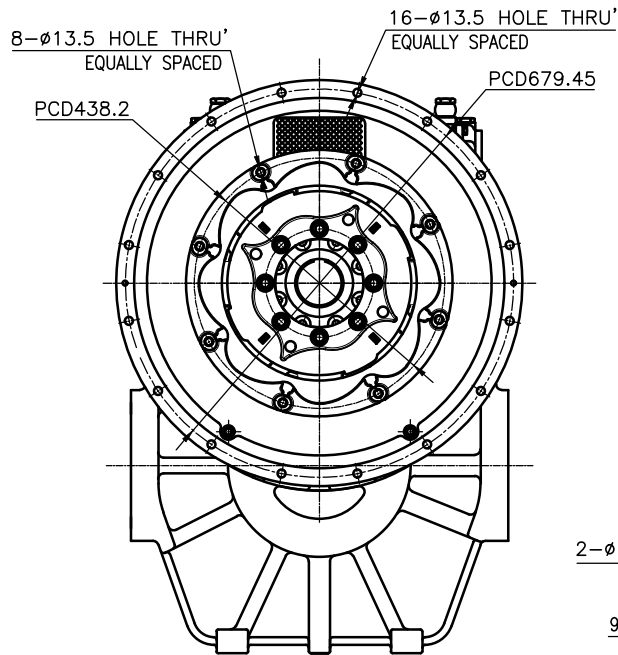


OIL INLET AND AIR BREATHER

FORWARD CLUTCH ACTUATING PRESSURE PORT (PT 1/8-28)

Lower Lubrication Pressure Check Port (PT 1/8-28)

DMT300HL MARINE TRANSMISSION SPECIFICATION	
GEAR RATIO	2.61, 3.10, 3.56, 4.13, 4.59
TOTAL WEIGHT	APPROX. 787 Kg(DRY)
OIL CAPACITY	APPROX. 16.5 L
OIL VISCOSITY	SAE #30
OIL PRESSURE	1.96 ~ 2.54 MPa CLUTCH OIL
DIRECTION OF ROTATION	INPUT C.C.W VIEWED FROM THE STERN
IN FORWARD	OUTPUT C.W VIEWED FROM THE STERN
OIL CHANGE INTERVAL	THE FIRST 100HOURS OF INITIAL OPERATION AND EVERY 1000HOURS THEREAFTER
SHIFTING LIMIT	UNDER 50% OF THE RATED ENGINE SPEED
OIL COOLER	WATER FLOW 90 ~ 120L/m TEMPERATURE OF COOLING WATER MAX 32°
OPERATING TORQUE OF SHIFTING LEVER	UNDER 2.94Nm



ENGINE DIRECTION OF ROTATION

NIPPLE (M26P1.5, 18)

EYEBOLT FOR LIFTING MARINE TRANSMISSION (2-BOLTS ONE EACH SIDE)

FORWARD

OIL LEVEL GAUGE

EMERGENCY BOLT LOCATION (FORWARD)

6-25 REAMER BOLTS

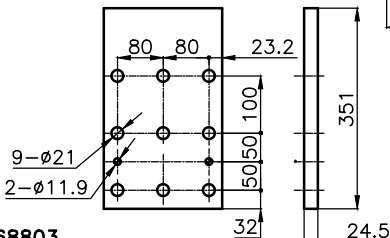
2-M12P1.75 FOR JACK BOLTS

OUTPUT SHAFT DIRECTION OF ROTATION IN FORWARD

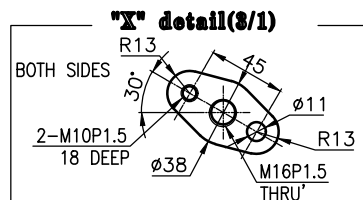
MAGNET PLUG M16P1.5

REVERSE

- REMARK
1. HOUSING : SAE# 0
 2. DRIVING RING : SAE 14"
 3. COUPLING TYPE -CENTA Flex Coupling : 77268803



BRACKET DIMENSION



'X' detail(3/1)

TOLERANCE ON				PART NO.		PART NAME		Q'TY		MATERIAL		SIZE		REMARKS	
FRACTIONS	DECIMALS	ANGLES		NO.	REV.	NAME	QTY	REV.	MATERIAL	SIZE	REV.	REMARKS	ORIGINAL DWG. NO.		
±	±	±	±												
MATERIAL				DATE		SCALE		TYPE		NAME		TYPE		REMARKS	
APPROVED BY				2018.09.12		N/S		DMT300HL		MARINE TRANSMISSION		DMT300HL		ORIGINAL DWG. NO.	
CHECKED BY				GH.Park		GH.Park		GH.Park		GH.Park		DMT300HL		ORIGINAL DWG. NO.	
DRAWN				TH.Cha		TH.Cha		TH.Cha		TH.Cha		DMT300HL		ORIGINAL DWG. NO.	
DESIGNED				JK.Kim		JK.Kim		JK.Kim		JK.Kim		DMT300HL		ORIGINAL DWG. NO.	
REV.				REV.		REV.		REV.		REV.		REV.		REV.	
1	0.0	0.0	0.0	1	0										
2	0.1	0.1	0.1	2	0										
3	0.2	0.2	0.2	3	0										
4	0.3	0.3	0.3	4	0										
5	0.4	0.4	0.4	5	0										
6	0.5	0.5	0.5	6	0										
7	0.6	0.6	0.6	7	0										
8	0.7	0.7	0.7	8	0										
9	0.8	0.8	0.8	9	0										
10	0.9	0.9	0.9	10	0										
11	1.0	1.0	1.0	11	0										
12	1.1	1.1	1.1	12	0										
13	1.2	1.2	1.2	13	0										
14	1.3	1.3	1.3	14	0										
15	1.4	1.4	1.4	15	0										
16	1.5	1.5	1.5	16	0										
17	1.6	1.6	1.6	17	0										
18	1.7	1.7	1.7	18	0										
19	1.8	1.8	1.8	19	0										
20	1.9	1.9	1.9	20	0										
21	2.0	2.0	2.0	21	0										

D-I INDUSTRIAL