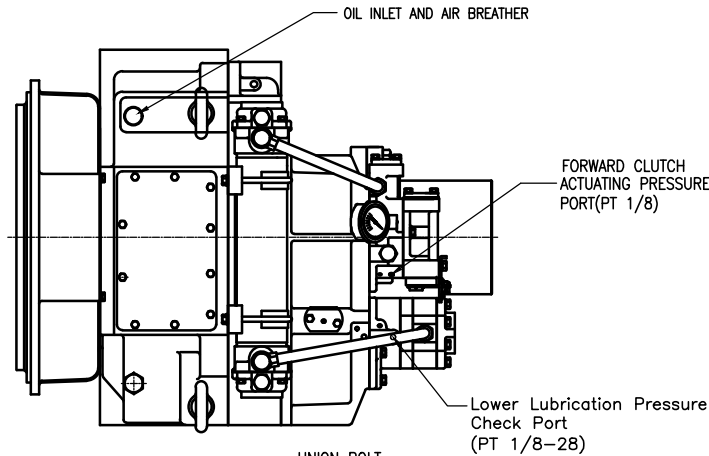
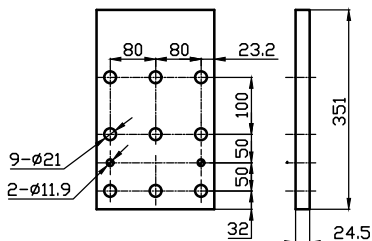
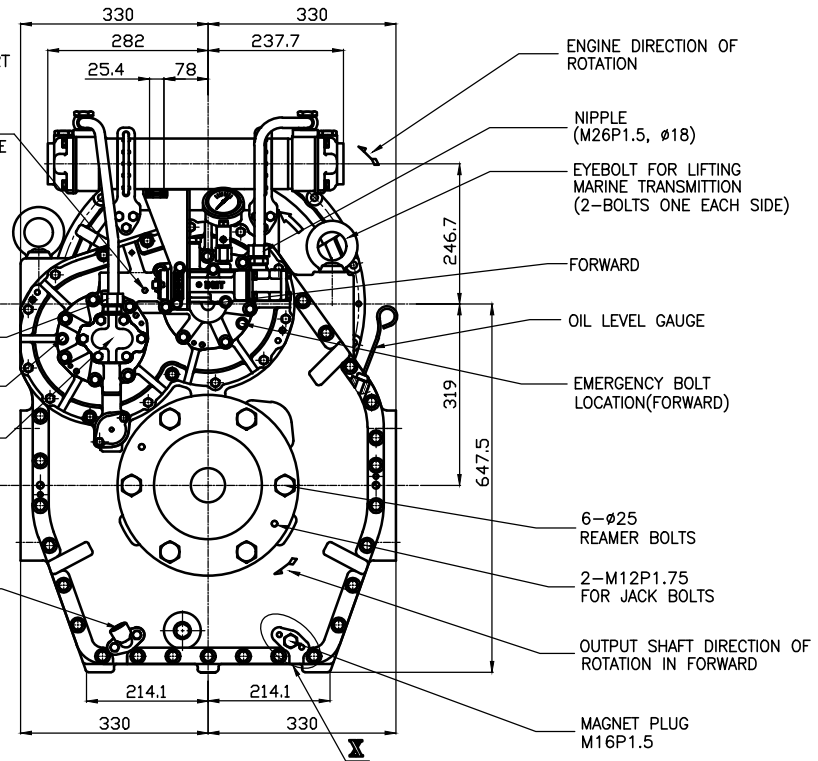
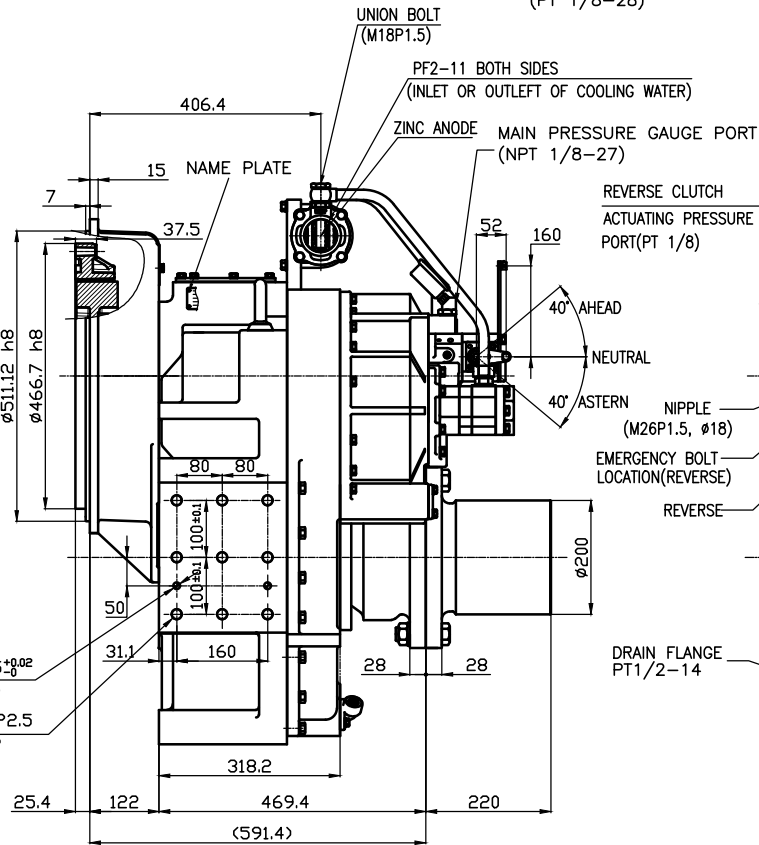
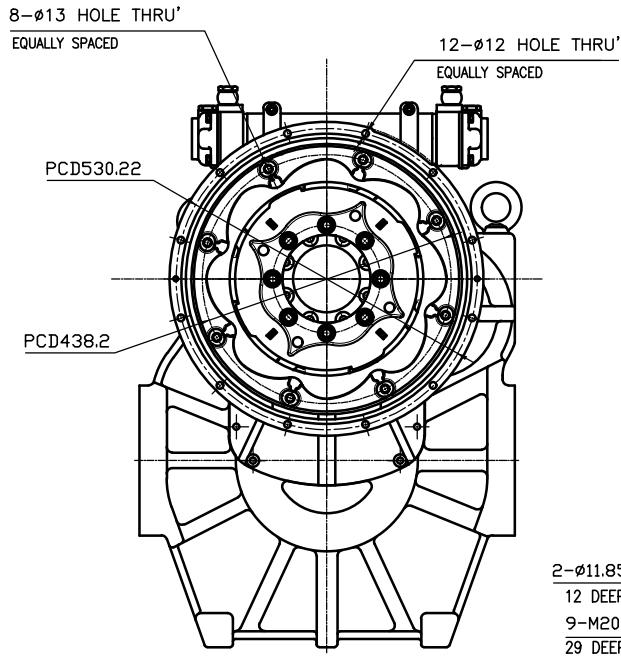


OUTPUT SHAFT COUPLING & PROPELLER COUPLING DIMENSION

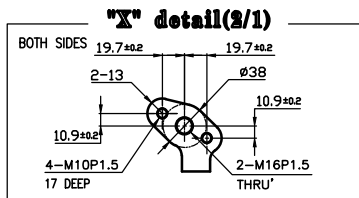


| DMT330DL MARINE TRANSMISSION SPECIFICATION | | | |
|--|--|-----------------------------|---------|
| GEAR RATIO | 2.61, 3.10, 3.56, 4.13, 4.59 | | |
| TOTAL WEIGHT | APPROX. 768 Kg(DRY) | | |
| OIL CAPACITY | APPROX. 17.5 L | | |
| OIL VISCOSITY | SAE #30 | | |
| OIL PRESSURE | 1.96 ~ 2.54 MPa | CLUTCH OIL | |
| DIRECTION OF ROTATION | INPUT | C.C.W VIEWED FROM THE STERN | |
| | OUTPUT | C.W VIEWED FROM THE STERN | |
| OIL CHANGE INTERVAL | THE FIRST 100HOURS OF INITIAL OPERATION AND EVERY 1000HOURS THEREAFTER | | |
| SHIFTING LIMIT | UNDER 50% OF THE RATED ENGINE SPEED | | |
| | WATER FLOW 90 ~ 120L/m | | |
| OIL COOLER | TEMPERATURE OF COOLING WATER | | MAX 32° |
| | OPERATING TORQUE OF SHIFTING LEVER UNDER 2.94Nm | | |



BRACKET DIMENSION

REMARK
 1.HOUSING : SAE# 1
 2.DRIVING RING : SAE 14"
 3.COULING TYPE
 -CENTA Flex Coupling : 77268801



| 공용공차 | TOLERANCE ON | 번호 | PART NO. | 명칭 | 수량 | 재질 | 규격 | 비고 |
|-----------|--------------|-------|-------------|------------|----------------|----------------------------|----|----|
| FRACTIONS | DECIMALS | 각도 | MATERIAL | | 형식 | REMARKS | | |
| ± | ± | ± | 2018.08.08 | | SCALE | DMT330DL ORIGINAL DWG. NO. | | |
| ± | ± | ± | APPROVED BY | CHECKED BY | SCALE | MARINE TRANSMISSION | | |
| ± | ± | ± | TW.KIM | | TYPE | DWG. NO. 33000GLA-E-114CFR | | |
| ± | ± | ± | DESIGNED | | NAME | 000 | | |
| ± | ± | ± | DRAWN | | D-I INDUSTRIAL | | | |
| ± | ± | ± | CHECKED | | SIZE | A0 | | |
| ± | ± | ± | DESIGNED | | 코드 번호 | CODE ID. NO. | | |
| ±0.3 | ±0.1 | ±0.05 | | | 1/1 | | | |
| ±0.5 | ±0.2 | ±0.07 | | | | | | |
| ±0.7 | ±0.3 | ±0.1 | | | | | | |
| ±1.2 | ±0.5 | ±0.2 | | | | | | |
| ±2.0 | ±0.8 | ±0.3 | | | | | | |