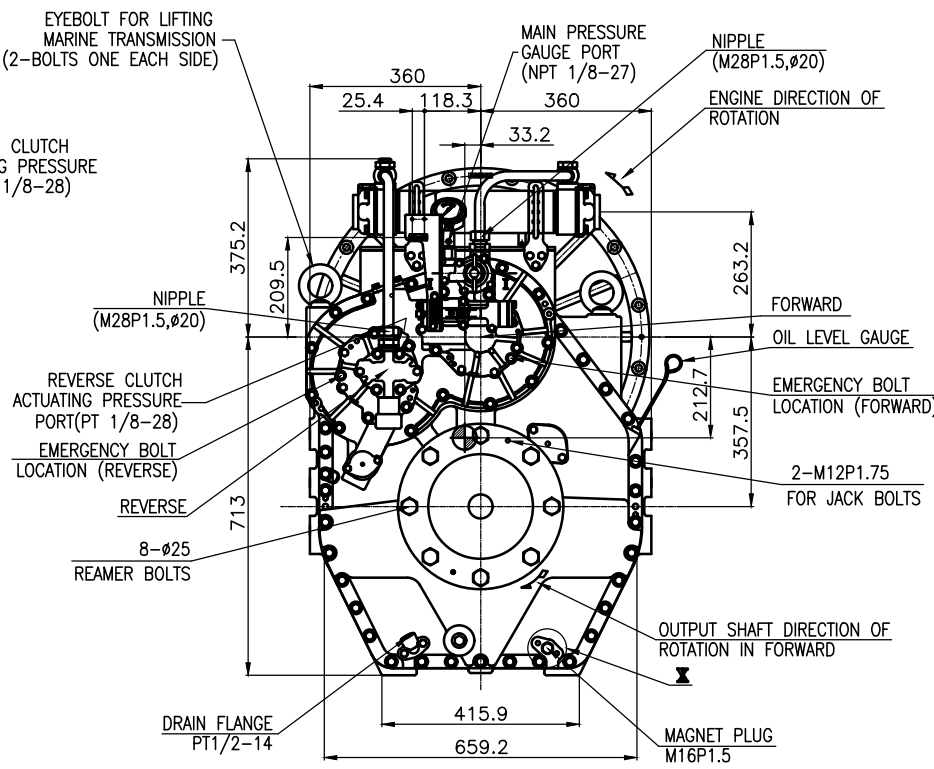
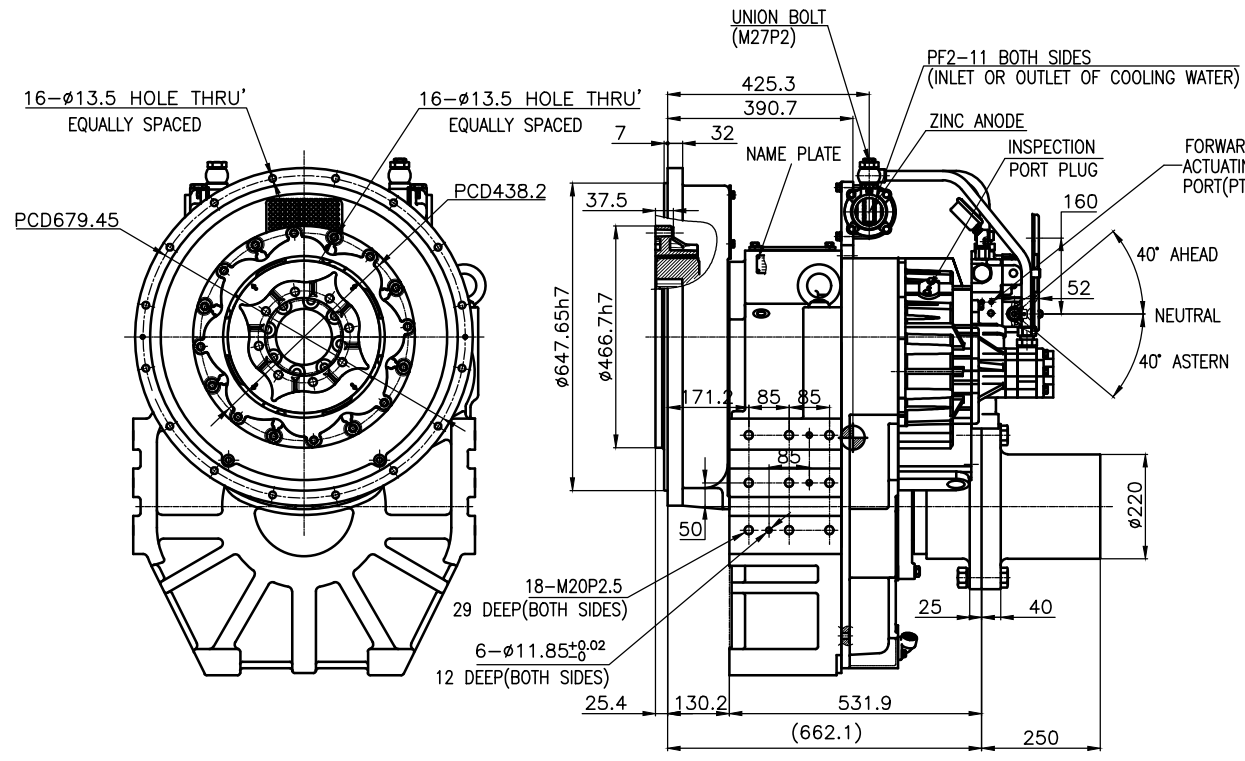
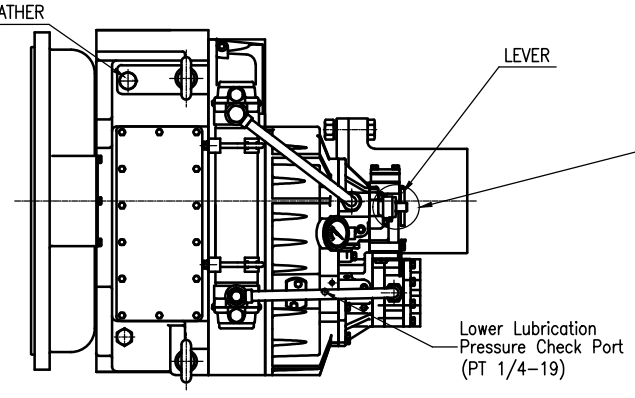
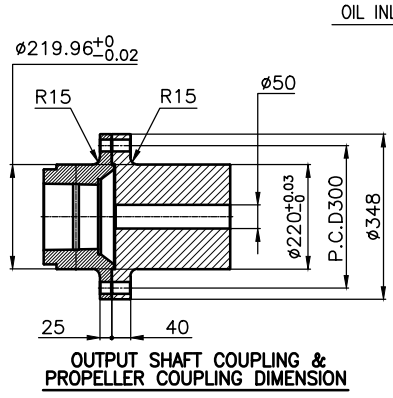
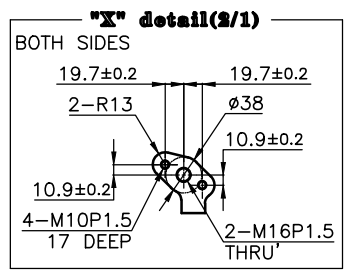
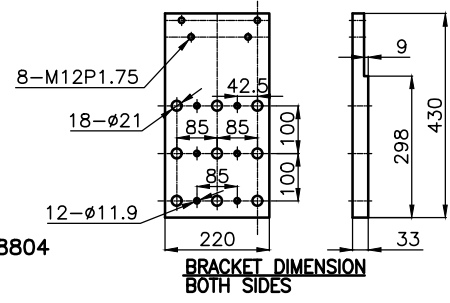


DMT450DL MARINE TRANSMISSION SPECIFICATION			
GEAR RATIO	3.02, 3.28, 3.56, 4.07, 4.48, 4.95		
TOTAL WEIGHT	APPROX .1199 Kg (DRY, INCLUDING THE PROPELLER COUPLING, FLYWHEEL HOUSING, CENTA COUPLING, BRACKETS.)		
OIL CAPACITY	APPROX. 18 L		
OIL VISCOSITY	SAE # 30		
OIL PRESSURE	1.96 ~ 2.54 MPa	CLUTCH OIL	
DIRECTION OF ROTATION	INPUT	C.C.W VIEWED FROM THE STERN	
IN FORWARD	OUTPUT	C.W VIEWED FROM THE STERN	
OIL CHANGE INTERVAL	THE FIRST 100HOURS OF INITIAL OPERATION AND EVERY 1000HOURS THEREAFTER		
SHIFTING LIMIT	UNDER 50% OF THE RATED ENGINE SPEED		
OIL COOLER	WATER FLOW	90 ~ 120 L/m	
	TEMPERATURE OF COOLING WATER	MAX 32°C	
OPERATING TORQUE OF SHIFTING LEVER	UNDER 2.94Nm		



REMARK

- HOUSING : SAE# 0
- DRIVING RING : SAE 14"
- COUPLING TYPE
CENTA FLEX COUPLING: 77318804



공용공차	TOLERANCE ON	번호	PART NO.	PART NAME	개수	재질	규격	비고
FRACTIONS	DECIMALS	ANGLE	MATERIAL		TYPE	REMARKS		
±	±	±			DMT450DL	ORIGINAL DWG. NO.		
1/100	± 0.1	± 0.1	2019.04.15		SCALE	1/1		
1/100	± 0.3	± 0.1	APPROVED BY	CHK'D BY	DESIGNED	MARINE TRANSMISSION		
1/100	± 0.5	± 0.2	JK.Kim	WY.Lee	TW.Kim	DWG. NO. 45200GDLA~F-014CFR		
1/100	± 0.7	± 0.3					REV. 000	
1/100	± 1.2	± 0.5					D-I INDUSTRIAL	
1/100	± 2.0	± 0.8					A 3 CODE ID. NO.	