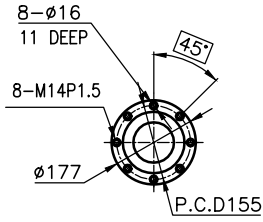
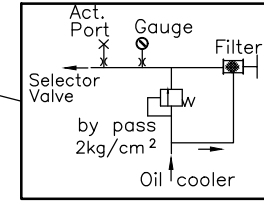
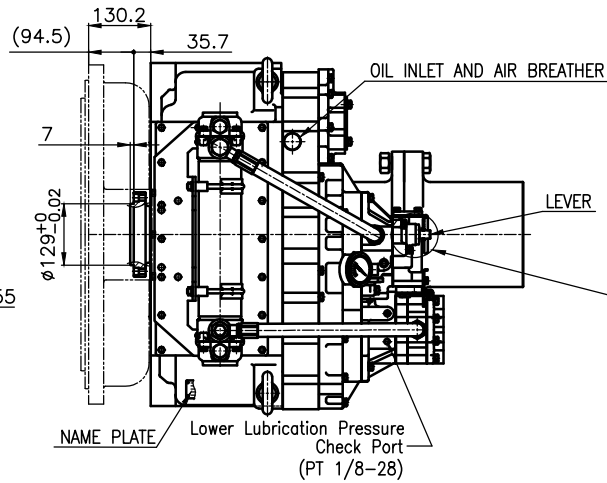


OUTPUT SHAFT COUPLING & PROPELLER COUPLING DIMENSION

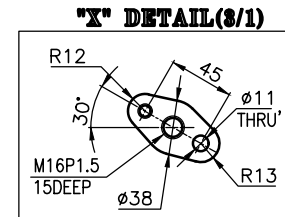
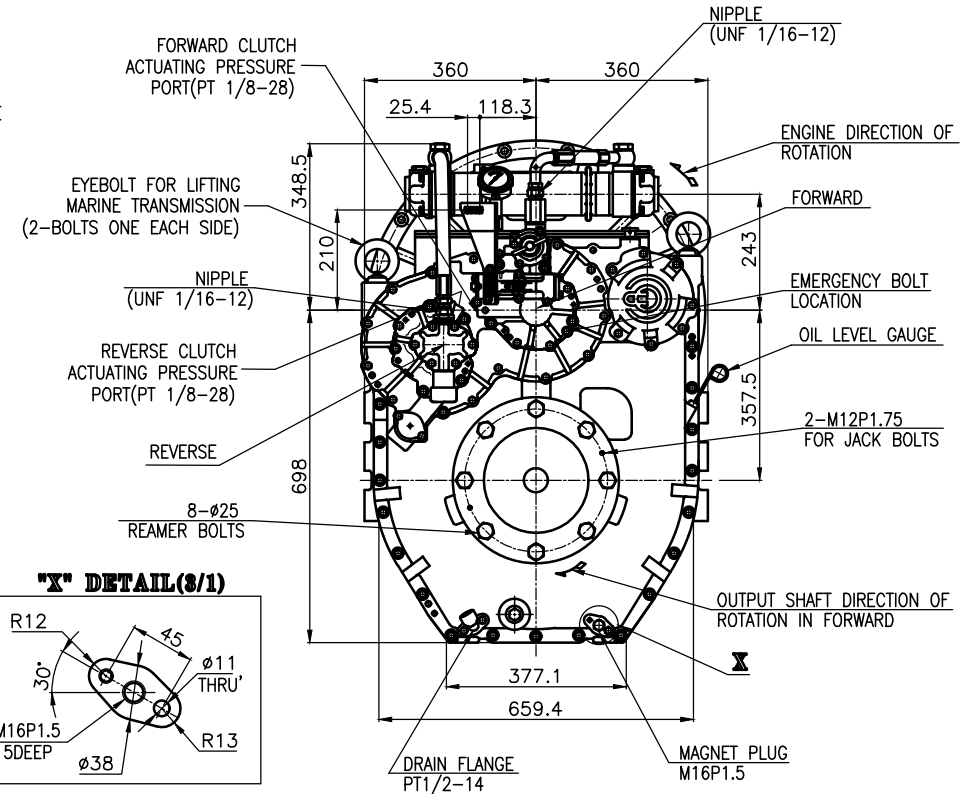
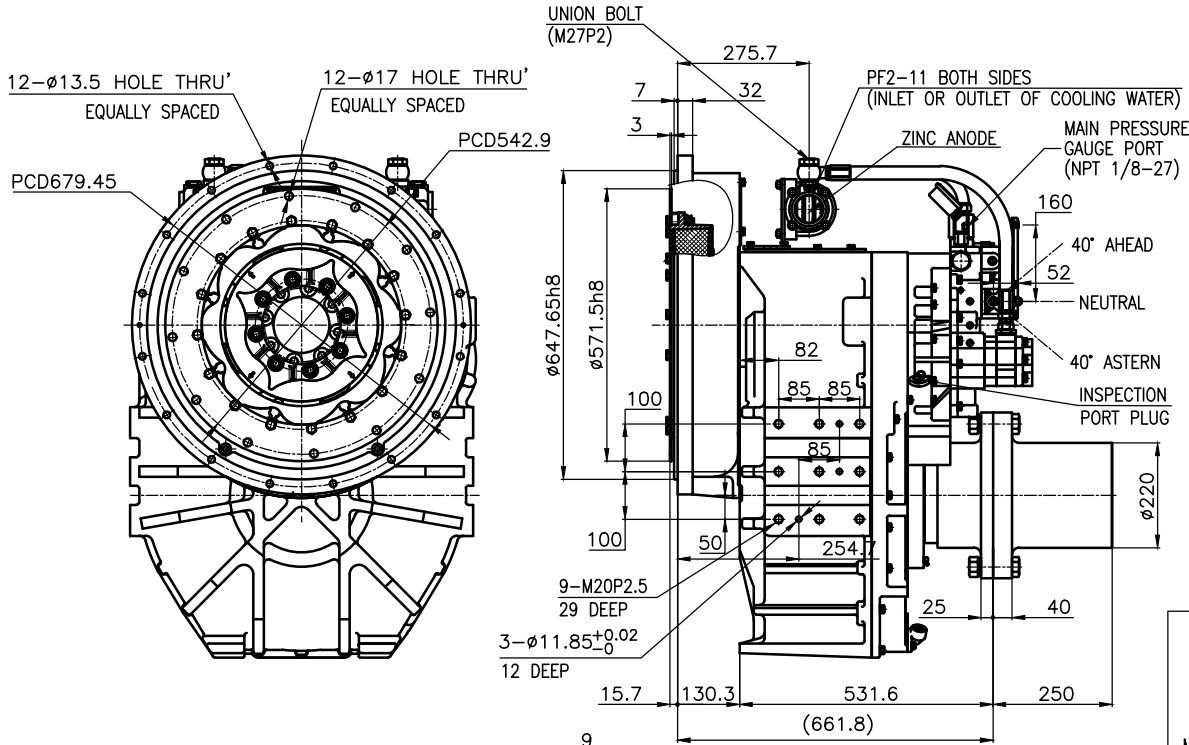


INPUT COUPLING DIMENSION

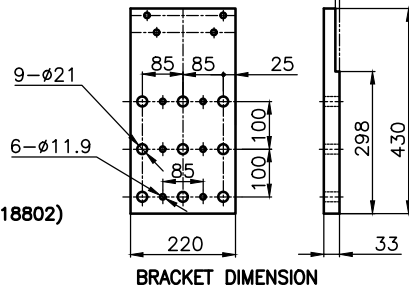


[BY PASS SYSTEM]

DMT460HL MARINE TRANSMISSION SPECIFICATION	
GEAR RATIO	3.02, 3.28, 3.56, 4.07, 4.48, 4.95
TOTAL WEIGHT	APPROX. 979 Kg(DRY)
OIL CAPACITY	APPROX. 18L
OIL VISCOSITY	SAE # 30
OIL PRESSURE	1.96 ~ 2.54 MPa
DIRECTION OF ROTATION	C.C.W VIEWED FROM THE STERN
IN FORWARD	C.W VIEWED FROM THE STERN
OIL CHANGE INTERVAL	THE FIRST 100HOURS OF INITIAL OPERATION AND EVERY 1000HOURS THEREAFTER
SHIFTING LIMIT	UNDER 50% OF THE RATED ENGINE SPEED
OIL COOLER	WATER FLOW 90 ~ 120 L/min TEMPERATURE OF COOLING WATER MAX 32°C
OPERATING TORQUE OF SHIFTING LEVER	UNDER 2.94Nm



- REMARK
- HOUSING : SAE# 0
  - DRIVING RING : SAE 18"
  - COUPLING TYPE :  
- CENTA Flex Coupling (77318802)



BRACKET DIMENSION

TOLERANCE ON				NO.	PART NO.	PART NAME	QTY	MATERIAL	SIZE	REMARKS
FRACTIONS	DECIMALS	ANGLES								
±	±	±	±							
1 초과 4 이하 ±0.3 ±0.1 ±0.05 4 16 ±0.5 ±0.2 ±0.07 16 63 ±0.7 ±0.3 ±0.1 63 250 ±1.2 ±0.5 ±0.2 250 1000 ±2.0 ±0.8 ±0.3				2018.09.12 2018.09.12		N/S GH.Park		DMT460HL MARINE TRANSMISSION		ORIGINAL DWG. NO. 000
JK.Kim TH.Cha GH.Park				46000GHA~F-018CFR		D-I INDUSTRIAL		A 8		CODE ID. NO.