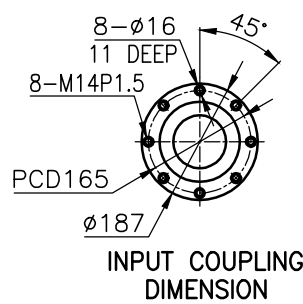
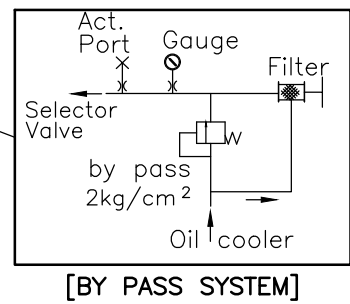
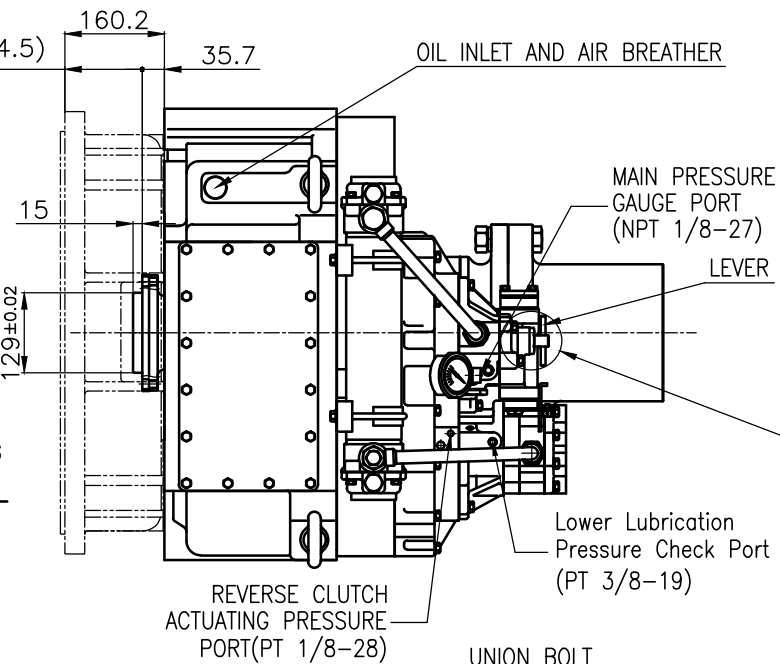


OUTPUT SHAFT COUPLING & PROPELLER COUPLING DIMENSION

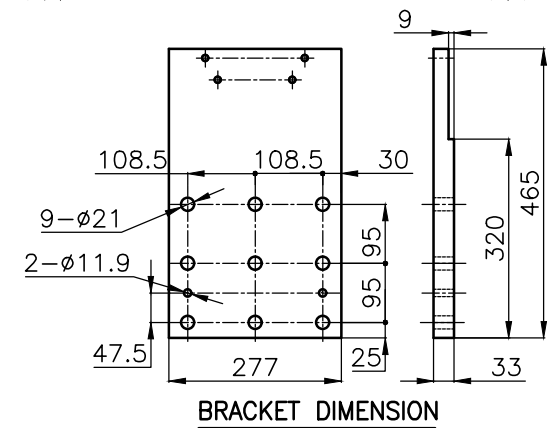
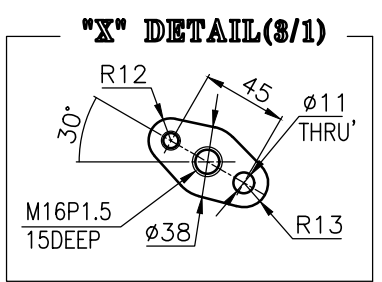
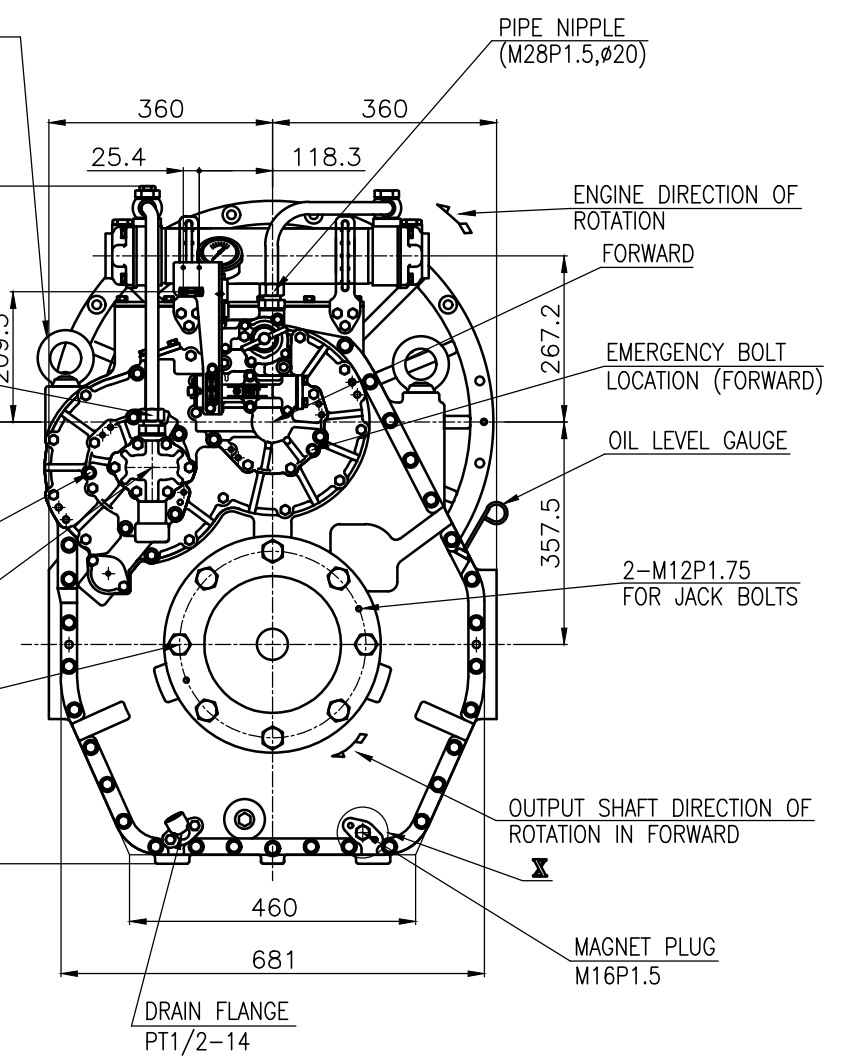
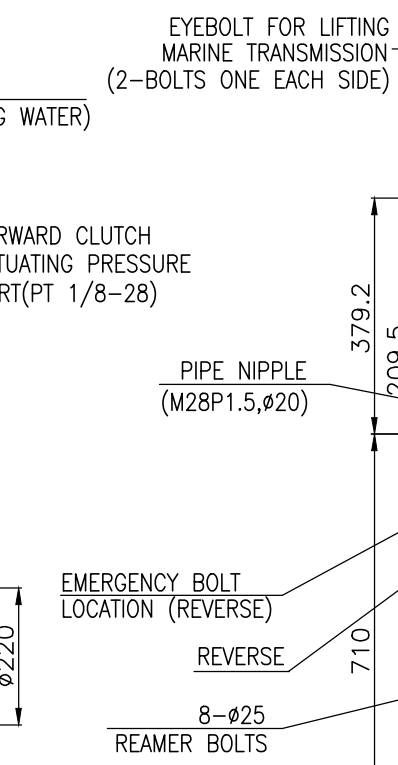
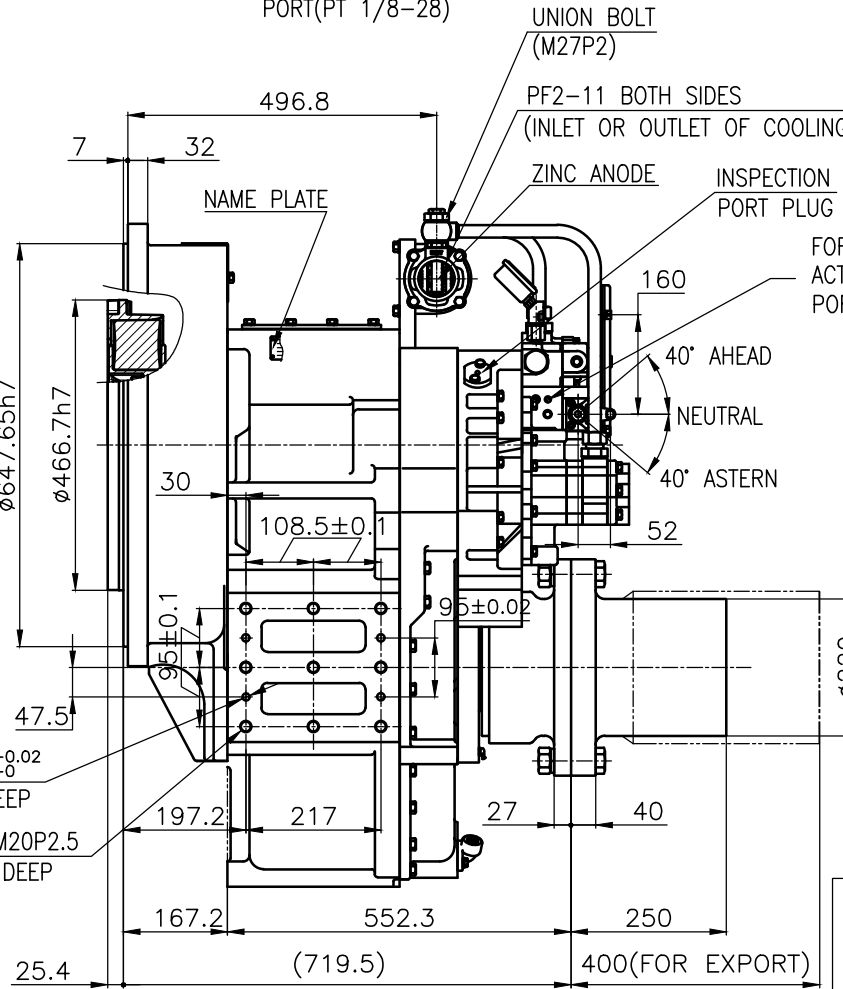
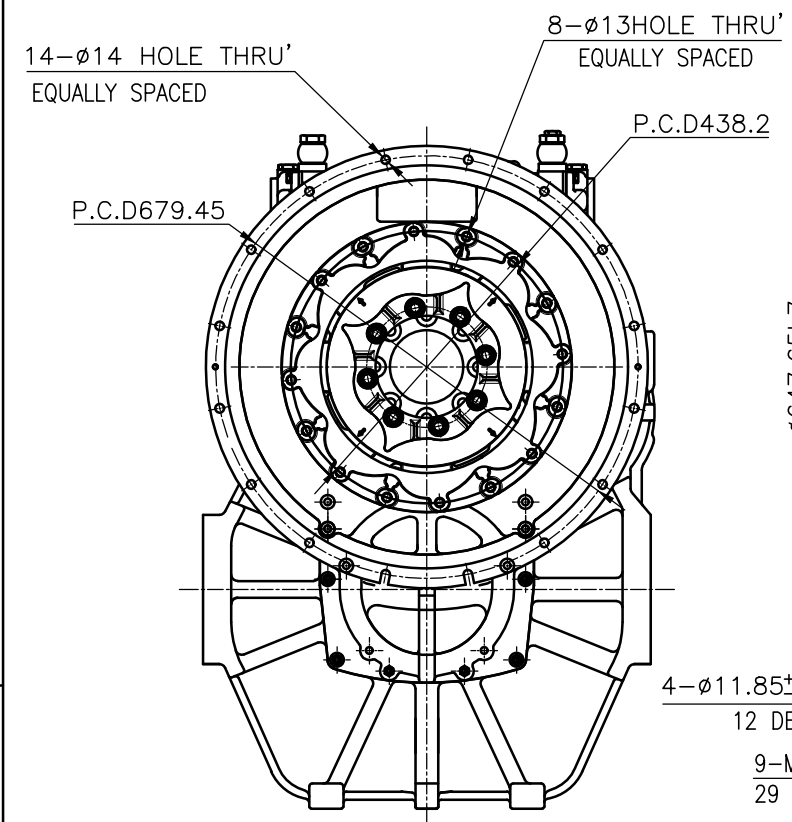


INPUT COUPLING DIMENSION



[BY PASS SYSTEM]

DMT561HL MARINE TRSANMISSION SPECIFICATION			
GEAR RATIO	3.02, 3.28, 3.56, 4.07, 4.48, 4.95		
TOTAL WEIGHT	APPROX. 977 Kg (DRY, EXCEPT FOR PROPELLER COUPLING)		
OIL CAPACITY	APPROX. 19 L		
OIL VISCOSITY	SAE # 30		
OIL PRESSURE	1.96 ~ 2.54 MPa	CLUTCH OIL	
DIRECTION OF ROTATION	INPUT	C.C.W VIEWED FROM THE STERN	
IN FORWARD	OUTPUT	C.W VIEWED FROM THE STERN	
OIL CHANGE INTERVAL	THE FIRST 100HOURS OF INITIAL OPERATION AND EVERY 1000HOURS THEREAFTER		
SHIFTING LIMIT	UNDER 50% OF THE RATED ENGINE SPEED		
OIL COOLER	WATER FLOW		90 ~ 120 L/m
	TEMPERATURE OF COOLING WATER		MAX 32°C
OPERATING TORQUE OF SHIFTING LEVER	UNDER 2.94Nm		



BRACKET DIMENSION

- REMARK
- HOUSING : SAE# 0
 - DRIVING RING : SAE 14"
 - COUPLING TYPE
CENTA FLEX COUPLING : 77318804

TOLERANCE ON				PART NO.		PART NAME		Q'TY		MATERIAL		REMARKS	
분수	소수	각도	분수	소수	분수	소수	각도	분수	소수	분수	소수	분수	소수
±	±	±	±	±	±	±	±	±	±	±	±	±	±
1초과 4 이하	± 0.3	± 0.1	± 0.05	± 0.3	± 0.1	± 0.05	± 0.05	± 0.3	± 0.1	± 0.05	± 0.05	± 0.3	± 0.1
4	± 0.5	± 0.2	± 0.07	± 0.5	± 0.2	± 0.07	± 0.07	± 0.5	± 0.2	± 0.07	± 0.07	± 0.5	± 0.2
16	± 0.7	± 0.3	± 0.1	± 0.7	± 0.3	± 0.1	± 0.1	± 0.7	± 0.3	± 0.1	± 0.1	± 0.7	± 0.3
63	± 1.2	± 0.5	± 0.2	± 1.2	± 0.5	± 0.2	± 0.2	± 1.2	± 0.5	± 0.2	± 0.2	± 1.2	± 0.5
250	± 2.0	± 0.8	± 0.3	± 2.0	± 0.8	± 0.3	± 0.3	± 2.0	± 0.8	± 0.3	± 0.3	± 2.0	± 0.8

번호	PART NO.	PART NAME	개수	재질	규격	비고
1						
2						
3						
4						
5						
6						
7						
8						
9						
10						
11						
12						
13						
14						
15						
16						
17						
18						
19						
20						
21						
22						
23						
24						
25						
26						
27						
28						
29						
30						
31						
32						
33						
34						
35						
36						
37						
38						
39						
40						
41						
42						
43						
44						
45						
46						
47						
48						
49						
50						
51						
52						
53						
54						
55						
56						
57						
58						
59						
60						
61						
62						
63						
64						
65						
66						
67						
68						
69						
70						
71						
72						
73						
74						
75						
76						
77						
78						
79						
80						
81						
82						
83						
84						
85						
86						
87						
88						
89						
90						
91						
92						
93						
94						
95						
96						
97						
98						
99						
100						

D-I INDUSTRIAL