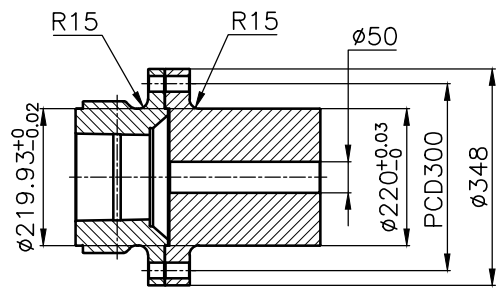
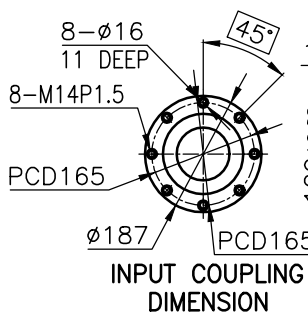


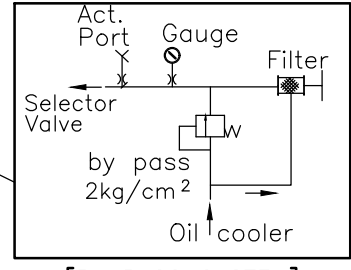
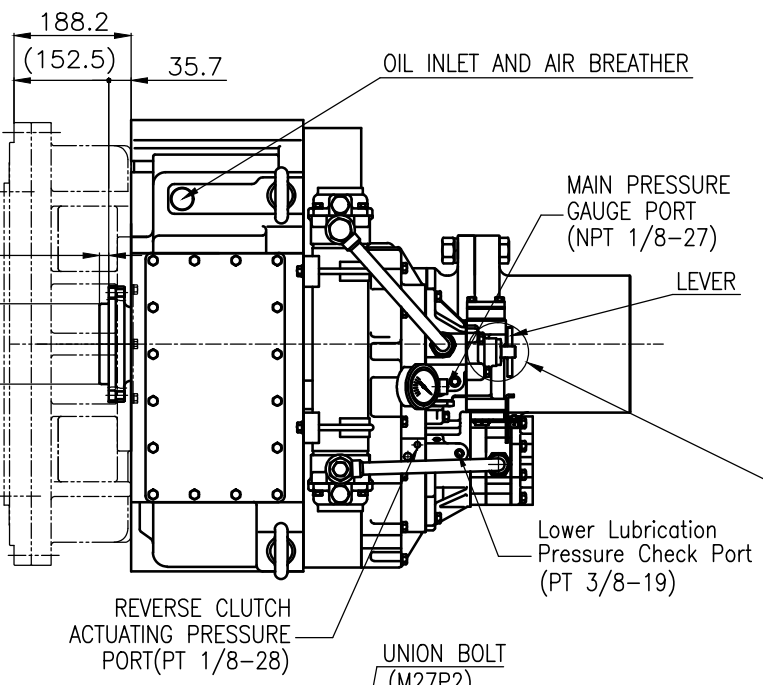
DMT561HL MARINE TRSANMISSION SPECIFICATION			
GEAR RATIO	3.02, 3.28, 3.56, 4.07, 4.48, 4.95		
TOTAL WEIGHT	APPROX. 977 Kg (DRY, EXCEPT FOR PROPELLER COUPLING)		
OIL CAPACITY	APPROX. 19 L		
OIL VISCOSITY	SAE # 30		
OIL PRESSURE	1.96 ~ 2.54 MPa	CLUTCH OIL	
DIRECTION OF ROTATION	INPUT	C.C.W VIEWED FROM THE STERN	
IN FORWARD	OUTPUT	C.W VIEWED FROM THE STERN	
OIL CHANGE INTERVAL	THE FIRST 100HOURS OF INITIAL OPERATION AND EVERY 1000HOURS THEREAFTER		
SHIFTING LIMIT	UNDER 50% OF THE RATED ENGINE SPEED		
OIL COOLER	WATER FLOW		90 ~ 120 L/m
	TEMPERATURE OF COOLING WATER		MAX 32°C
OPERATING TORQUE OF SHIFTING LEVER	UNDER 2.94Nm		



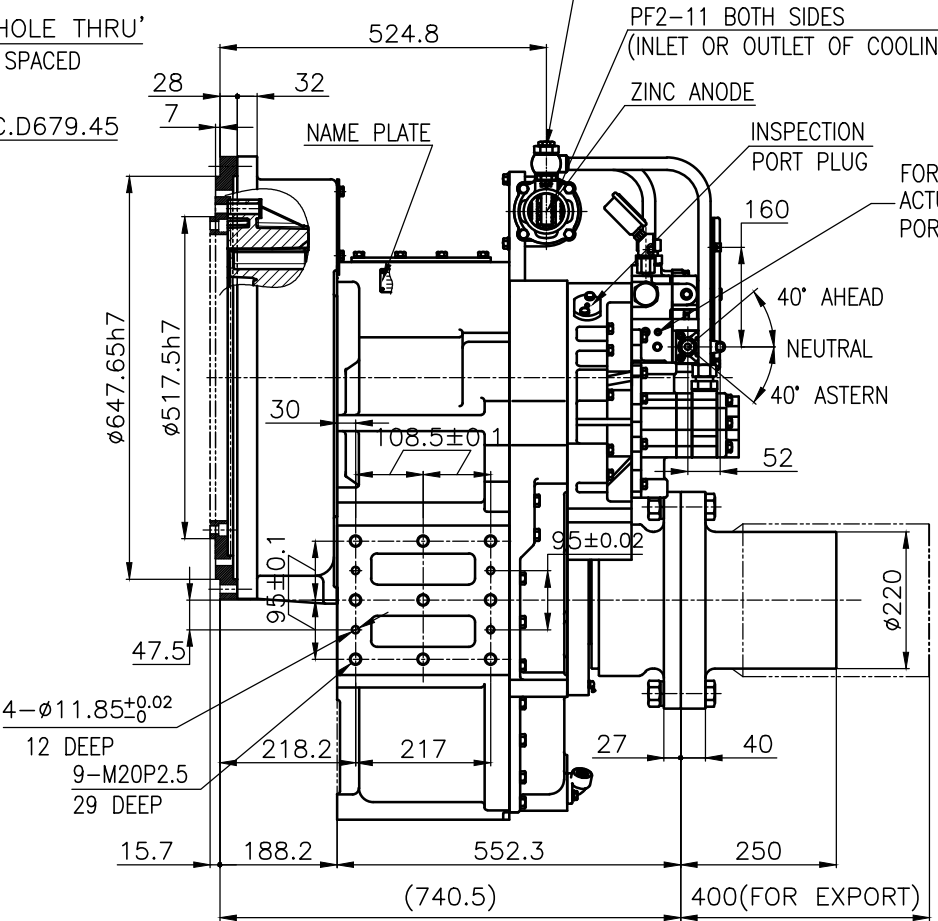
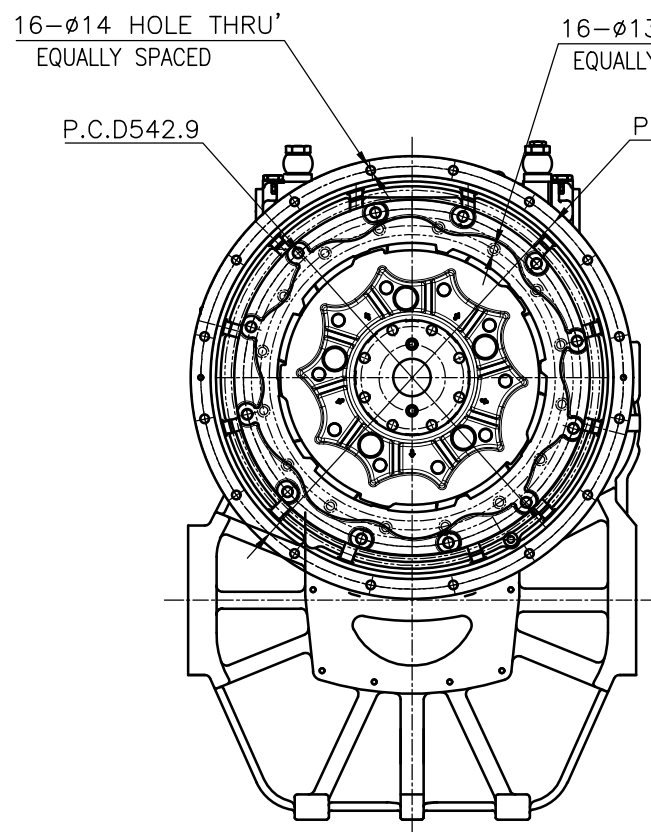
OUTPUT SHAFT COUPLING & PROPELLER COUPLING DIMENSION



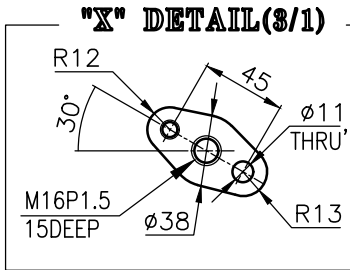
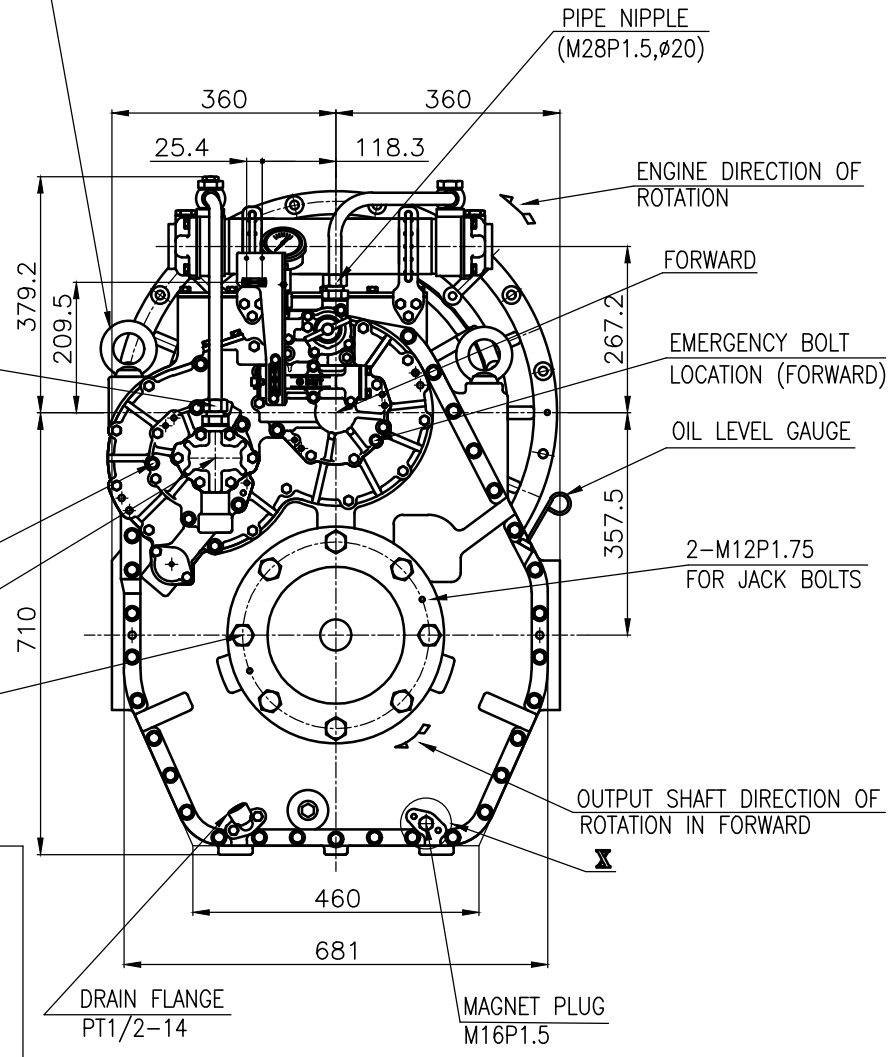
INPUT COUPLING DIMENSION



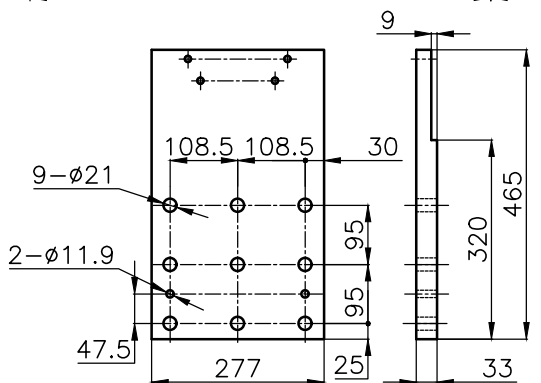
[BY PASS SYSTEM]



EYEBOLT FOR LIFTING MARINE TRANSMISSION (2-BOLTS ONE EACH SIDE)



"X" DETAIL (3/1)



BRACKET DIMENSION

REMARK

- 1.HOUSING : SAE# 0(550904)
- 2.DRIVING RING : SAE 16"
- 3.COUPLING TYPE
 - CENTA Flex Coupling : 77520802(18")
 - DUMMY(for CENTA FLEX COUPLING) : 77520890
 - DUMMY(for BELL HOUSING) : 550951

TOLERANCE ON				PART NO.		PART NAME		Q'TY		MATERIAL		SIZE		REMARKS	
FRACTIONS		DECIMALS		각도		적용 DATE		적용 SCALE		TYPE		ORIGINAL DWG. NO.		REV. NO.	
±		±		±		2018.09.12		1/1		DMT561HL		ORIGINAL DWG. NO.		REV. NO.	
1	±0.3	±0.1	±0.05	±0.5	±0.2	±0.07	JK.Kim	TH.Cha	GH.Park	도	56100GHA~F-016CFR	000	000		
4	±0.5	±0.2	±0.07	±0.7	±0.3	±0.1			MARINE TRANSMISSION						
16	±0.7	±0.3	±0.1	±1.2	±0.5	±0.2			56100GHA~F-016CFR						
63	±1.2	±0.5	±0.2	±2.0	±0.8	±0.3			D-I INDUSTRIAL		A 0				
250	±2.0	±0.8	±0.3							D-I INDUSTRIAL		A 0			