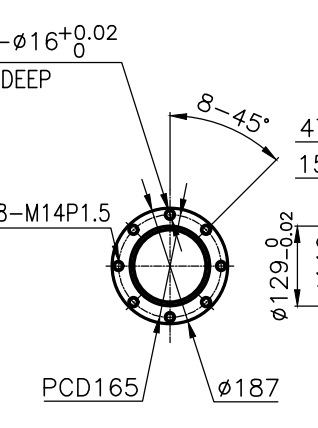
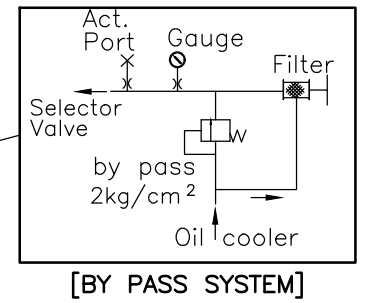
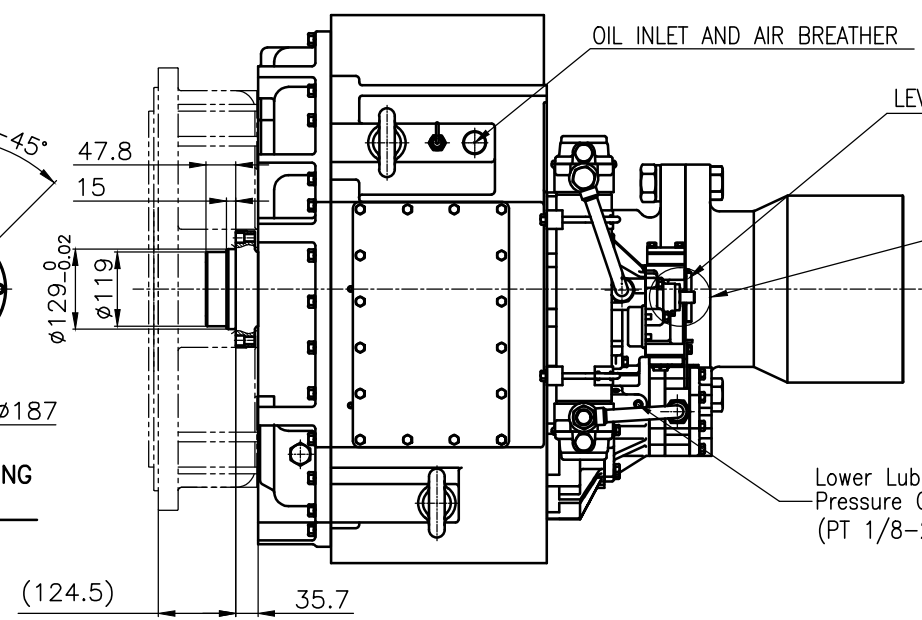


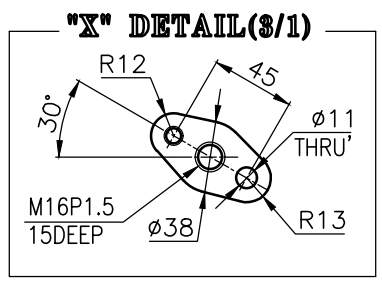
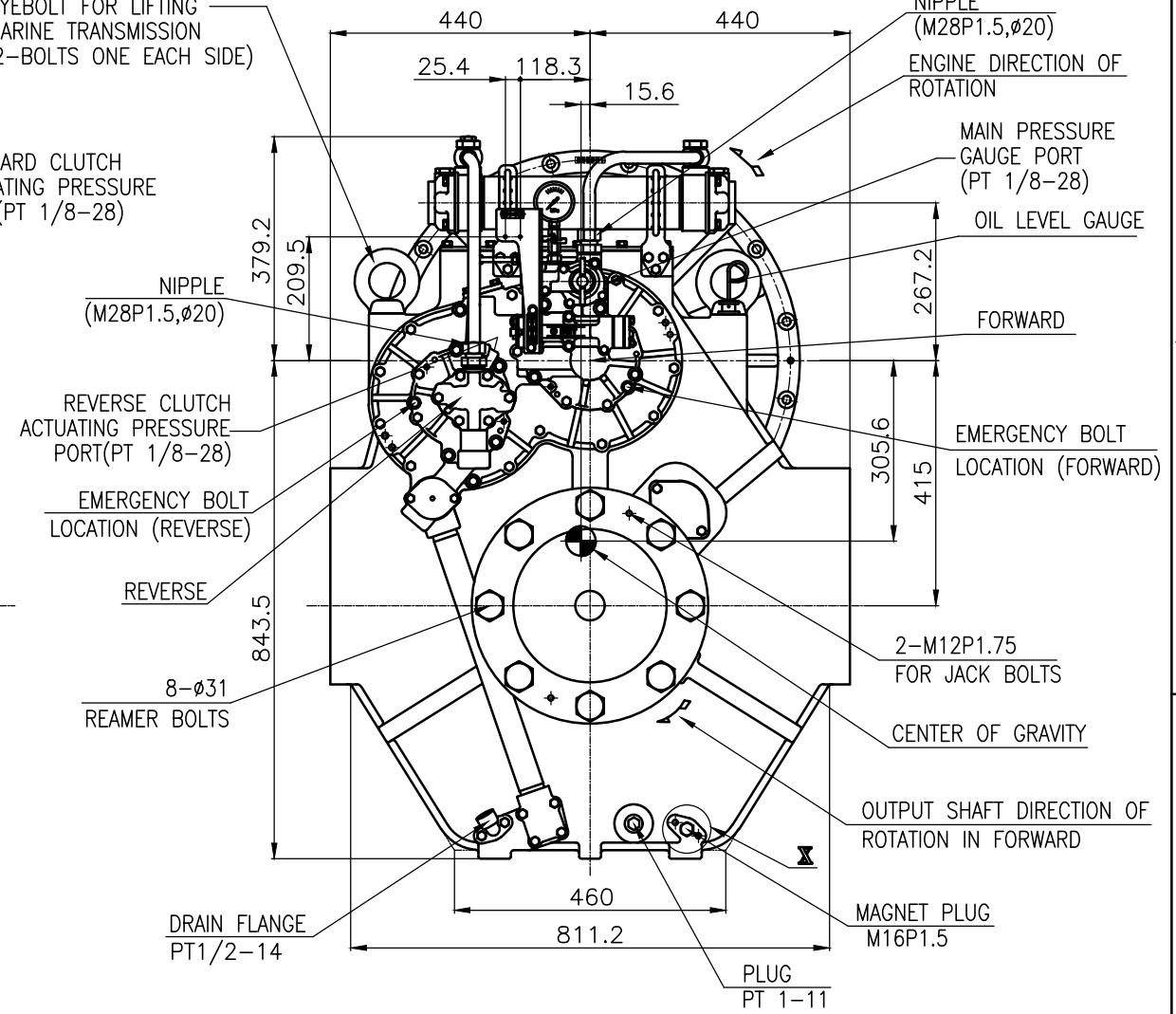
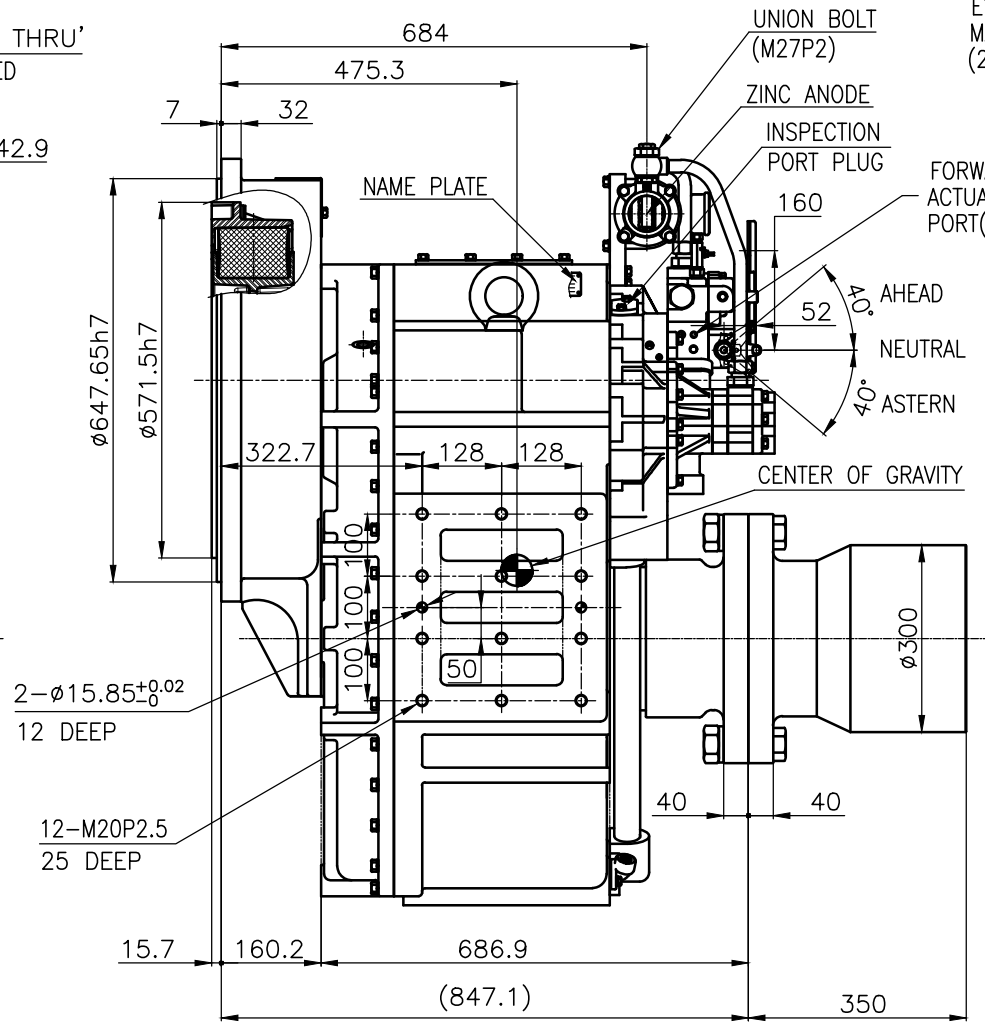
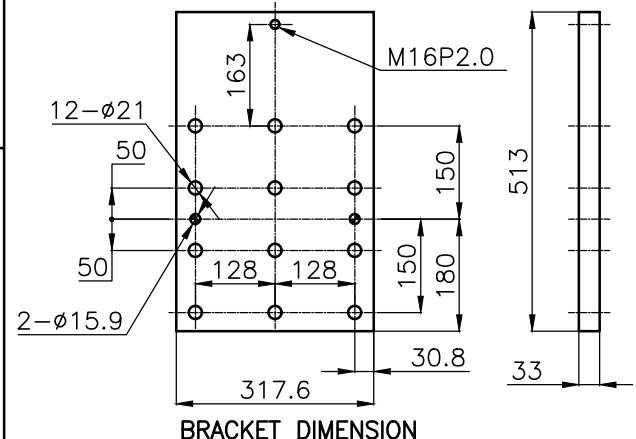
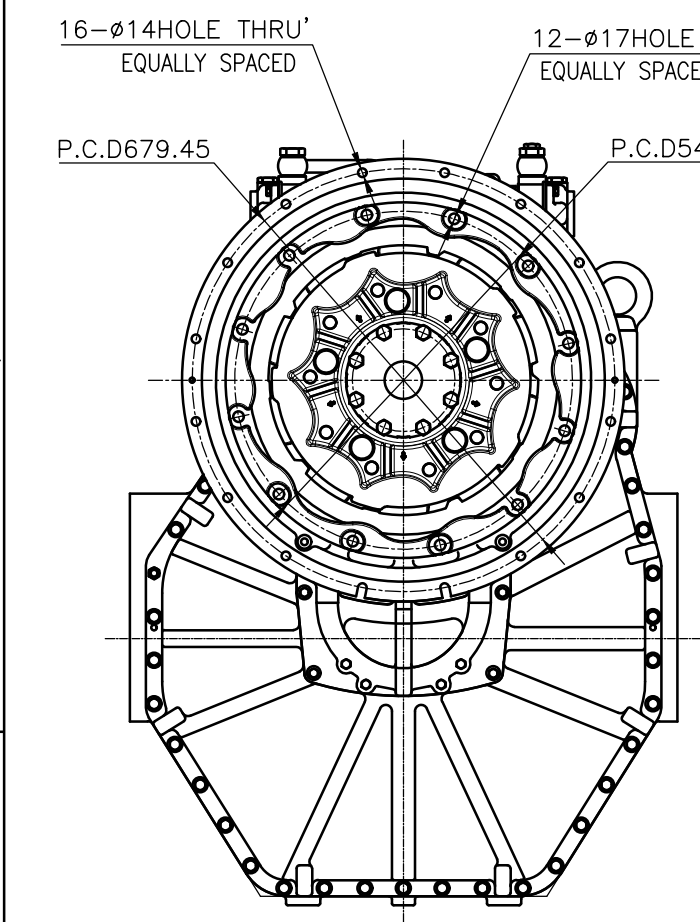
OUTPUT SHAFT COUPLING & PROPELLER COUPLING DIMENSION



INPUT COUPLING DIMENSION



DMT600BL MARINE TRANSMISSION SPECIFICATION	
GEAR RATIO	4.12, 4.48, 5.11, 5.62, 5.91
TOTAL WEIGHT	APPROX. 1605kg (DRY, EXCEPT FOR PROPELLER COUPLING, PPcoupling weight 184kg)
OIL CAPACITY	APPROX. 37 L
OIL VISCOSITY	SAE # 30
OIL PRESSURE	2.16 ~ 2.64 MPa CLUTCH OIL
DIRECTION OF ROTATION	INPUT C.C.W VIEWED FROM THE STERN
IN FORWARD	OUTPUT C.W VIEWED FROM THE STERN
OIL CHANGE INTERVAL	THE FIRST 100HOURS OF INITIAL OPERATION AND EVERY 1000HOURS THEREAFTER
SHIFTING LIMIT	UNDER 50% OF THE RATED ENGINE SPEED
OIL COOLER	WATER FLOW 100 ~ 200 L/min TEMPERATURE OF COOLING WATER MAX 32°C
OPERATING TORQUE OF SHIFTING LEVER	UNDER 2.94Nm



- REMARK
- HOUSING : SAE# 0
  - DRIVING RING : SAE 18"
  - COUPLING TYPE  
CENTA FLEX COUPLING: 77520802

공정공차 TOLERANCE ON		PART NO.		PART NAME		Q'TY		MATERIAL		SIZE		REMARKS	
분수	소수	각도	제		형		DMT600BL		원도		ORIGINAL DWG. NO.		
±	±	±	MATERIAL		TYPE		DATE		SCALE		MARINE TRANSMISSION		
±	±	±	2019.11.28		1/1		KC.Yoon		DWG. NO.		67000GBLA~E-018CFR		
1초과 4 이하	± 0.3	± 0.1	APPROVED BY		CHECKED BY		DRAWN		DESIGNED		KC.Yoon		
4	± 0.5	± 0.2	8		A		D-I INDUSTRIAL		CODE ID. NO.		000		
16	± 0.7	± 0.3											
63	± 1.2	± 0.5											
250	± 2.0	± 0.8											
1000	± 2.0	± 0.3											