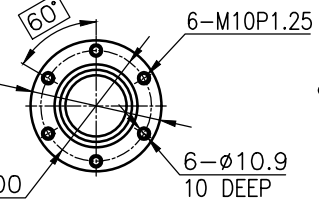
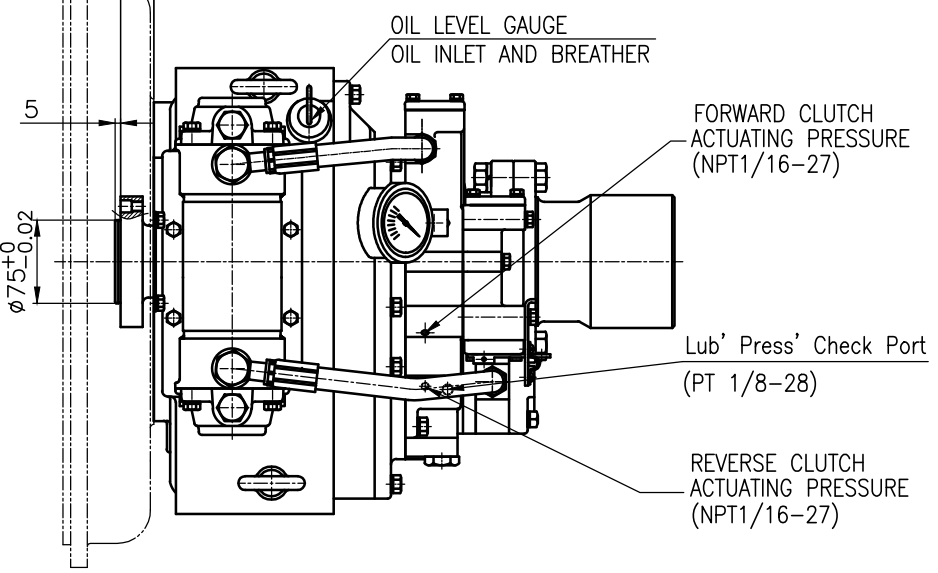


OUTPUT SHAFT COUPLING & PROPELLER COUPLING DIMENSION

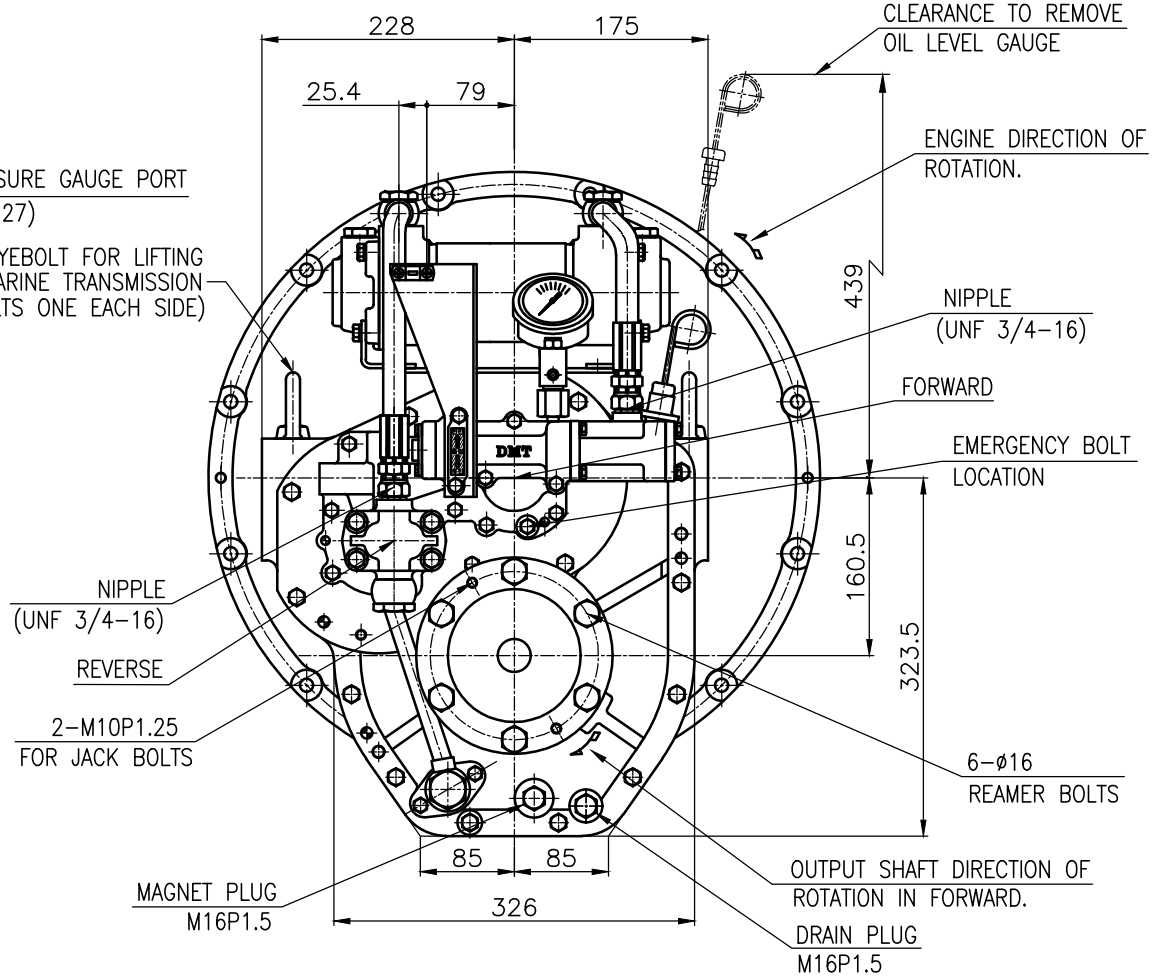
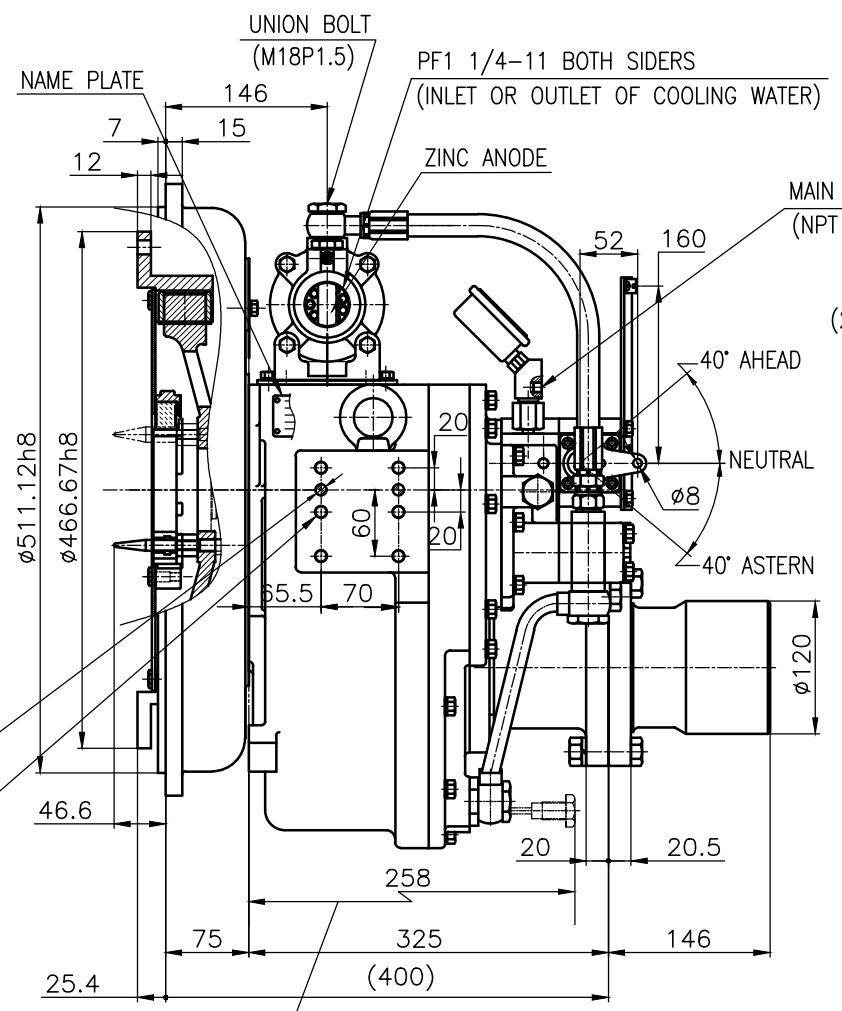
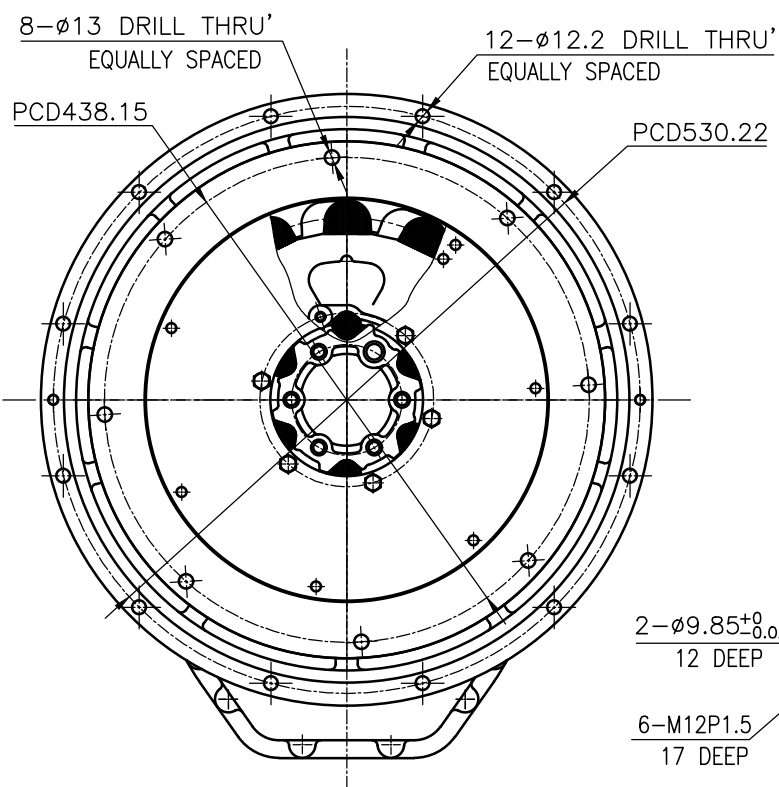


INPUT COUPLING DIMENSION

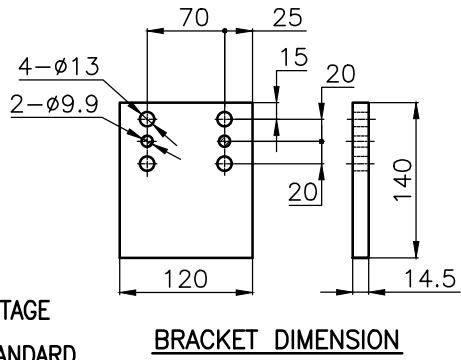
75  
(45.1) 29.9



DMT90A MARINE TRANSMISSION SPECIFICATION		
GEAR RATIO	1.61, 2.06, 2.45, 2.82, 3.12, 3.46	
TOTAL WEIGHT	APPROX 159 kg(DRY)	
OIL CAPACITY	APPROX. 3.5 L	
OIL VISCOSITY	SAE # 30	
OIL PRESSURE	1.96 ~ 2.54 MPa	CLUTCH OIL
DIRECTION OF ROTATION	INPUT C.C.W VIEWED FROM THE STERN	OUTPUT C.W VIEWED FROM THE STERN
OIL CHANGE INTERVAL	THE FIRST 100HOURS OF INITIAL OPERATION AND EVERY 1000HOURS THEREAFTER	
SHIFTING LIMIT	UNDER 50% OF THE RATED ENGINE SPEED	
OIL COOLER	WATER FLOW 40 ~ 60 L/min	
	TEMPERATURE OF COOLING WATER	MAX 32 °C
OPERATING TORQUE OF SHIFTING LEVER	UNDER 2.94Nm	



- REMARK (HOT)  
 1.HOUSING: SAE#1  
 2.DRIVING RING: SAE 14"  
 3.COUPLING TYPE : DUAL STAGE  
 4.APPLICATION ENGINE : STANDARD



TOLERANCE ON			NO.	PART NO.	PART NAME	QTY	MATERIAL	SIZE	REMARKS
FRACTIONS	DECIMALS	ANGLES							
±	±	±							
1/16	0.015	0.1							
1/32	0.0075	0.05							
1/64	0.00375	0.025							
1/128	0.001875	0.0125							
1/256	0.0009375	0.00625							
1/512	0.00046875	0.003125							

DATE	DESIGNED	CHECKED	APPROVED
2018.09.12	GH.Park	TH.Cha	JK.Kim

TYPE	NAME	DWG. NO.	SIZE
DMT90A	MARINE TRANSMISSION	090000GA~F-114DCH	A3

REVISION	DATE	DESCRIPTION
1	2018.09.12	INITIAL DESIGN
2	2018.09.12	REVISED
3	2018.09.12	REVISED
4	2018.09.12	REVISED