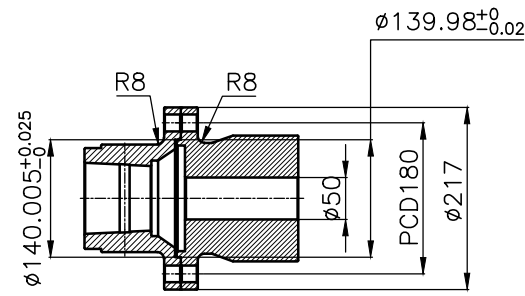
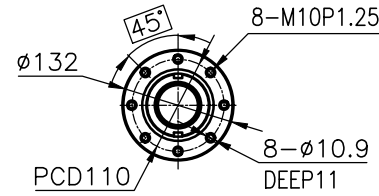


000
51000GA~F-2115DCH
DMT'ON'GMD
REV. 5

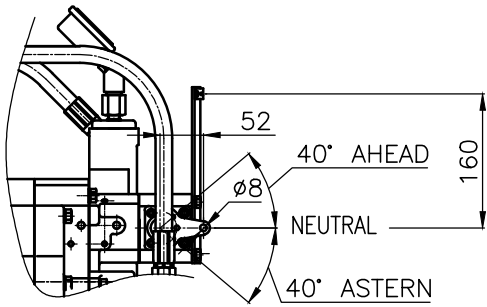
DMTP 5100 MARINE TRANSMISSION SPECIFICATION			
GEAR RATIO	1.47, 1.76, 1.93, 2.48, 3.08, 3.46		
TOTAL WEIGHT	APPROX. 263 kg(DRY)		
OIL CAPACITY	APPROX. 5 L		
OIL VISCOSITY	SAE # 30		
OIL PRESSURE	1.96 ~ 2.35 MPa	CLUTCH OIL	
DIRECTION OF ROTATION IN FORWARD	INPUT	C.C.W VIEWED FROM THE STERN	
	OUTPUT	C.W VIEWED FROM THE STERN	
OIL CHANGE INTERVAL	THE FIRST 100HOURS OF INITIAL OPERATION AND EVERY 1000HOURS THEREAFTER		
SHIFTING LIMIT	UNDER 50% OF THE RATED ENGINE SPEED		
OIL COOLER	WATER FLOW 40 ~ 60L/min		
	TEMPERATURE OF COOLING WATER		MAX 32°C
OPERATING TORQUE OF SHIFTING LEVER	UNDER 2.94Nm		



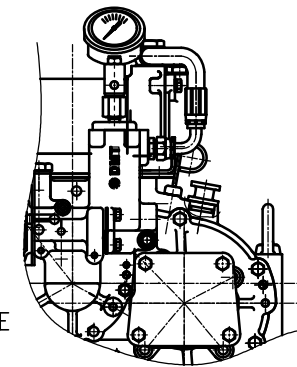
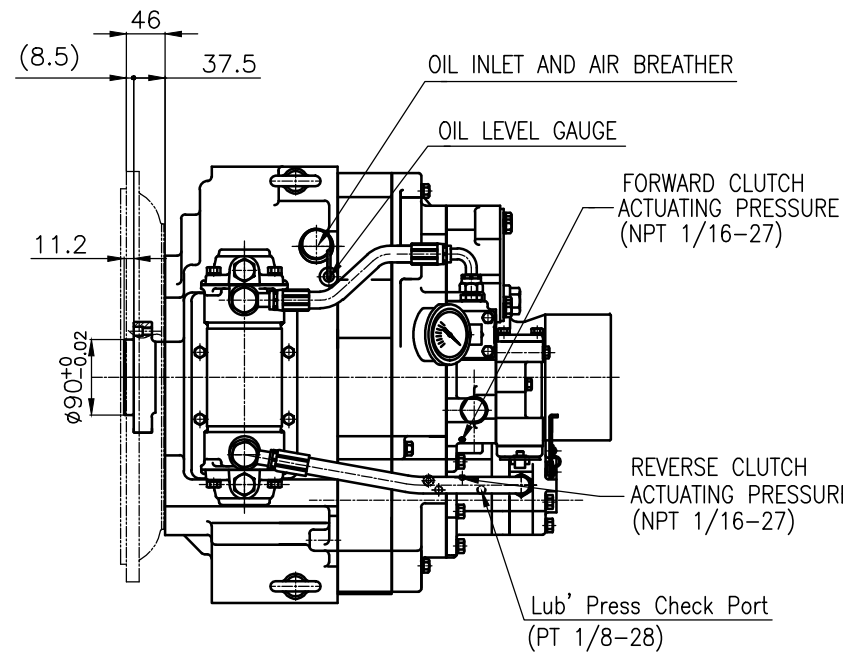
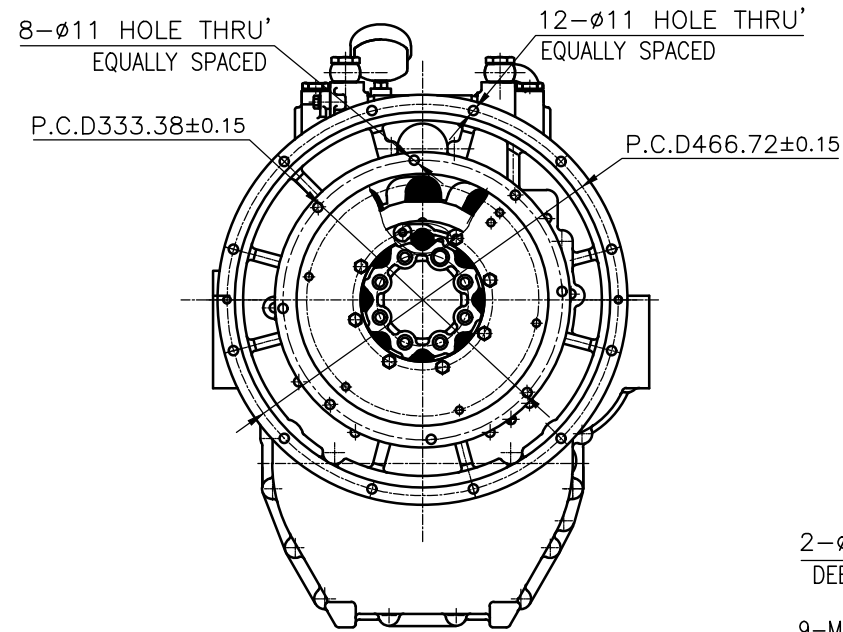
OUTPUT SHAFT COUPLING & PROPELLER COUPLING DIMENSION



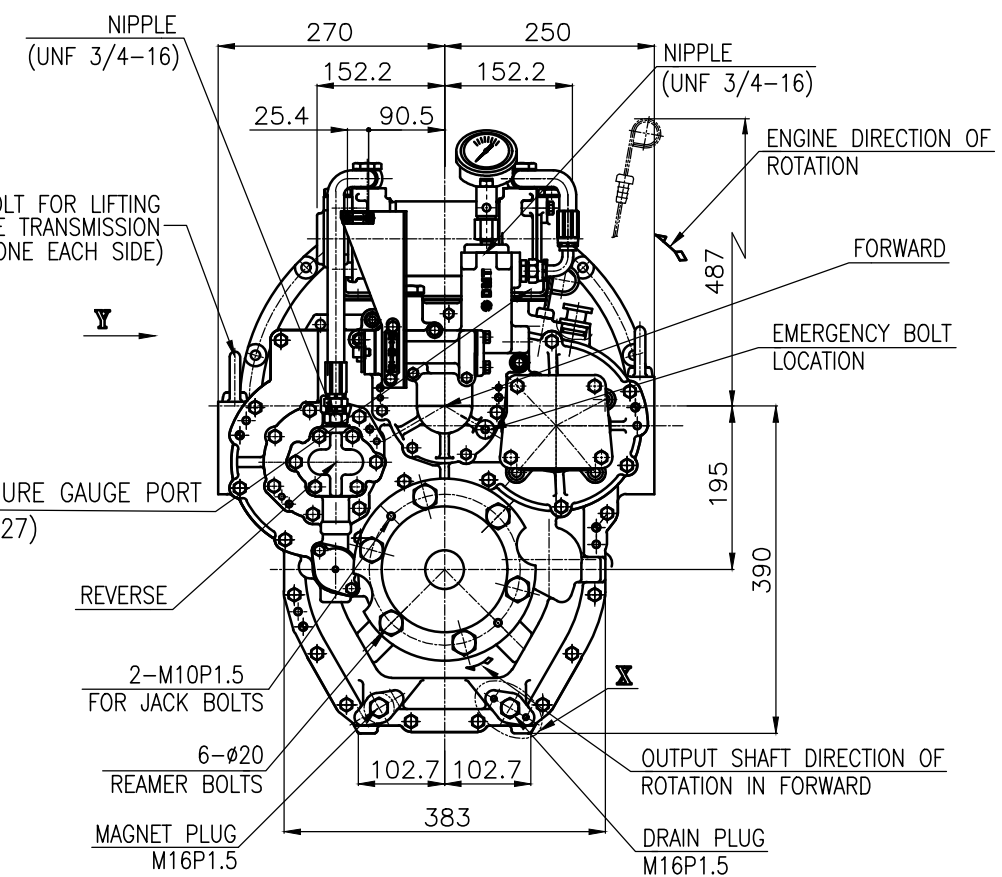
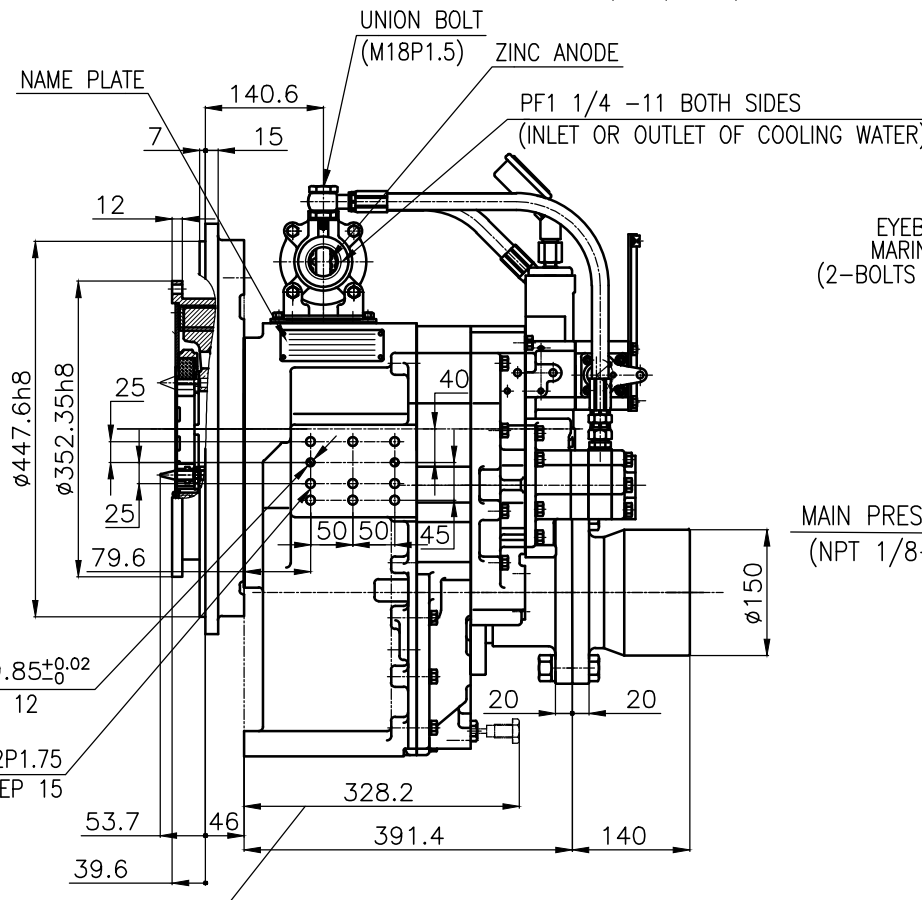
INPUT COUPLING DIMENSION



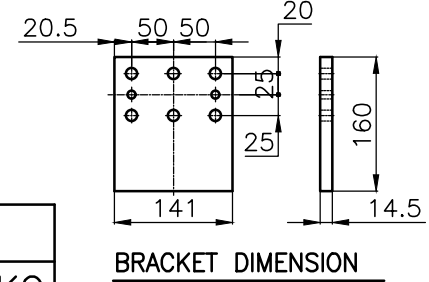
VIEW Y



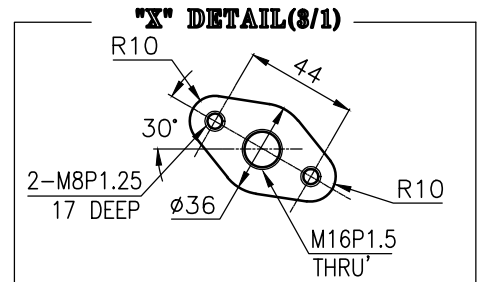
P.T.O ATTACHED



REMARK
1.HOUSING: SAE#2
2.DRIVING RING: SAE 11.5"
3.COUPLING TYPE : DUAL STAGE



BRACKET DIMENSION



公差公差 TOLERANCE ON				번호 NO.		PART NO.		PART NAME		개수 Q'TY		재질 MATERIAL		규격 SIZE		비고 REMARKS	
분수 FRACTIONS	소수 DECIMALS	각도 ANGLES	±	±	±	±	±	±	±	±	±	±	±	±	±	±	±
1/2	0.5	30°	±	±	±	±	±	±	±	±	±	±	±	±	±	±	±
1/4	0.25	15°	±	±	±	±	±	±	±	±	±	±	±	±	±	±	±
1/8	0.125	7.5°	±	±	±	±	±	±	±	±	±	±	±	±	±	±	±
1/16	0.0625	3.75°	±	±	±	±	±	±	±	±	±	±	±	±	±	±	±
1/32	0.03125	1.875°	±	±	±	±	±	±	±	±	±	±	±	±	±	±	±
1/64	0.015625	0.9375°	±	±	±	±	±	±	±	±	±	±	±	±	±	±	±

구분	번호	조급	종급	정급	구분	번호	조급	종급	정급
1	호과 4 이하	± 0.3	± 0.1	± 0.05	1	호과 4 이하	± 0.3	± 0.1	± 0.05
4	16	± 0.5	± 0.2	± 0.07	4	16	± 0.5	± 0.2	± 0.07
16	63	± 0.7	± 0.3	± 0.1	16	63	± 0.7	± 0.3	± 0.1
63	250	± 1.2	± 0.5	± 0.2	63	250	± 1.2	± 0.5	± 0.2
250	1000	± 2.0	± 0.8	± 0.3	250	1000	± 2.0	± 0.8	± 0.3

DATE	SCALE	TYPE	NAME	DWG. NO.	REV.
2018.09.12	1/1	DMTP5100	MARINE TRANSMISSION	51000GA~F-2115DCH	000

APPROVED BY	CHECKED BY	DRAWN	DESIGNED	SIZE	CODE ID. NO.
JK.Kim	TH.Cha	GH.Park		A1	

제 품 HS Code	소 재 HS Code	중 량 Weight
		263 KG