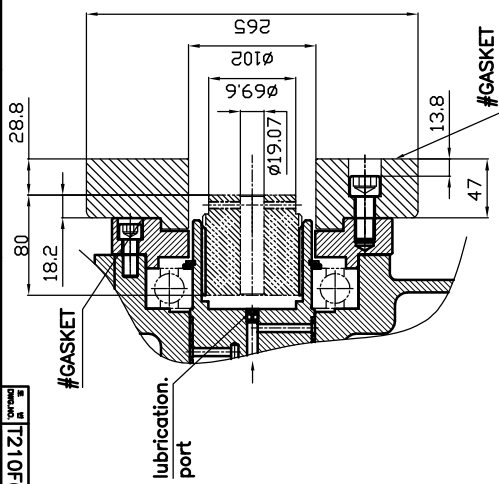
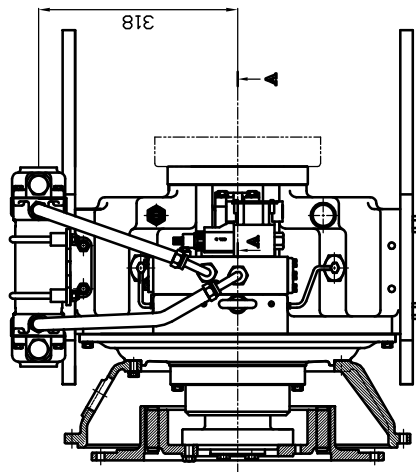
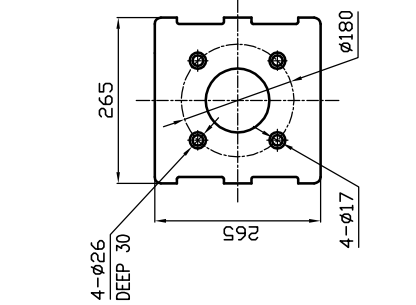


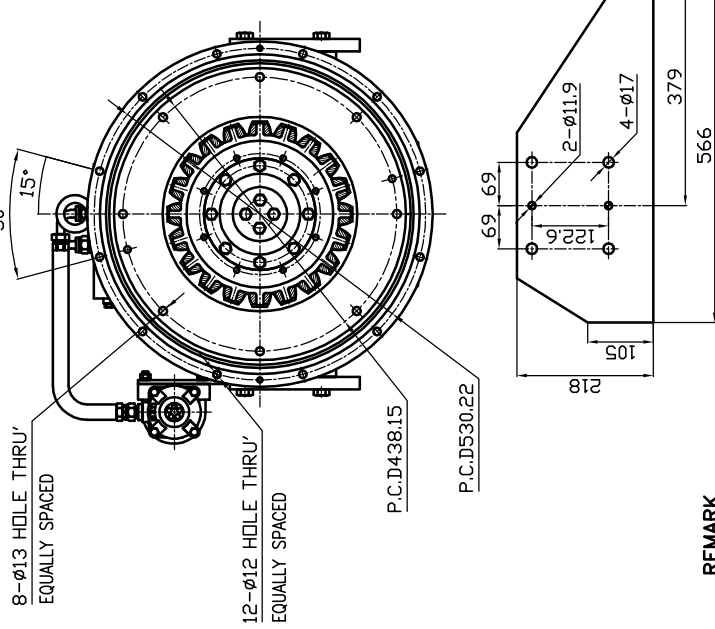
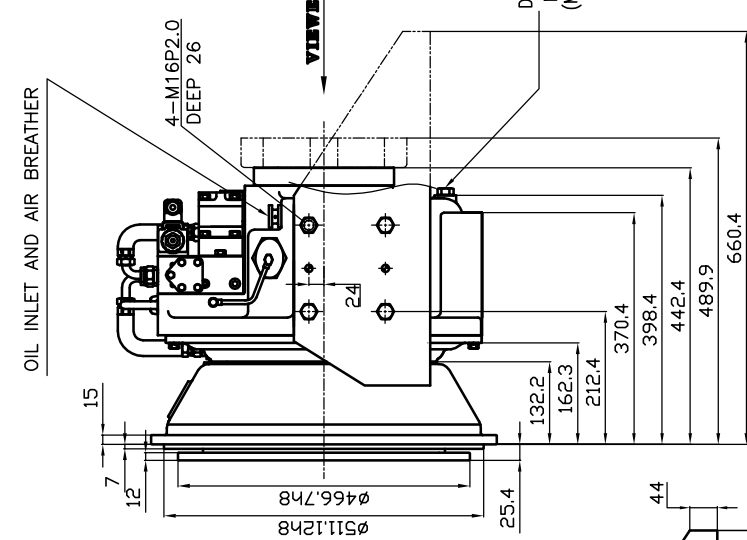
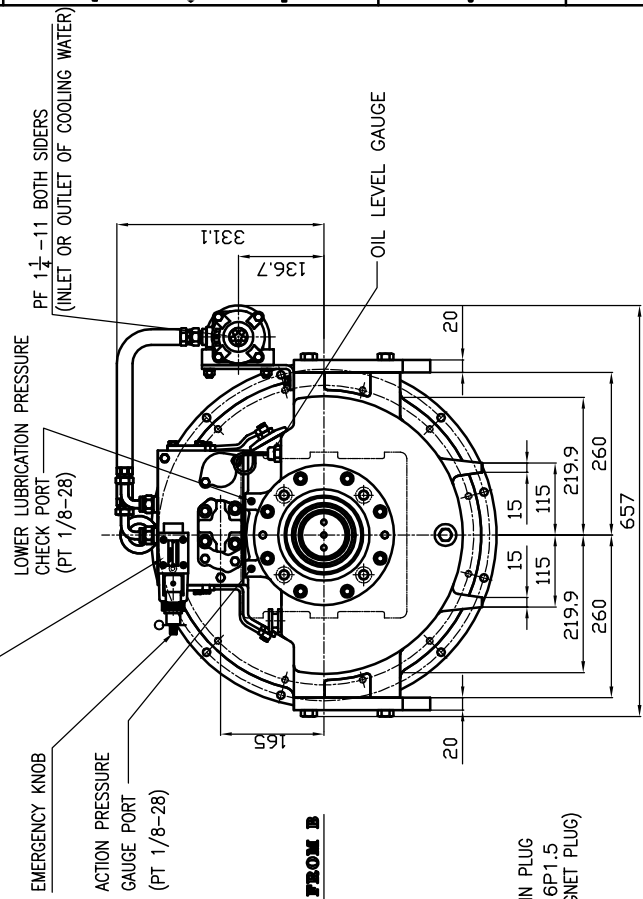
REV	SYL	DESCRIPTION	DATE	REV'D	APP'D

DPO 210 HYDRAULIC POWER TAKE OFF SPECIFICATION	
GEAR RATIO	ONLY 1 : 1
TOTAL WEIGHT	APPROX. 250 kg (DRY)
OIL CAPACITY	APPROX. 5 L
OIL VISCOSITY	SAE # 30
OIL PRESSURE	1.56 ~ 2.45 MPa
DIRECTION OF ROTATION	CLUTCH OIL
OIL CHANGE INTERVAL	THE SAME DIRECTION AS ENGINE ROTATION
SHIFTING LIMIT	THE FIRST 100 HOURS OF INITIAL OPERATION AND EVERY 1000 HOURS THEREAFTER
OIL COOLER	UNDER 50% OF THE RATED ENGINE SPEED
	WATER FLOW 40 ~ 60 L/min
	TEMPERATURE OF COOLING WATER MAX. 32°C

ROTATION DIRECTION BY MODEL (VIEWED FROM B)	
MODEL	INPUT (ENGINE) OUTPUT (PTO)
DPO-F210P	(RIGHT) (RIGHT)
DPO-R210P	(LEFT) (LEFT)



단면 A-A (2x1)
 # Must check the leakage of oil when operating because the pump assembled part is designed with force-lubrication.



REMARK

1. HOUSING: SAE#1 BRACKET DIMENSION
2. DRIVING RING: SAE 14"
3. SIZE OF PUMP FLANGE MAY BE CHANGED DEPENDING ON PUMP SPEC.

TOLERANCE ON DIMENSIONS		TOLERANCE ON DIMENSIONS	
mm	inch	mm	inch
0.05	0.002	0.05	0.002
0.10	0.004	0.10	0.004
0.20	0.008	0.20	0.008
0.50	0.020	0.50	0.020
1.00	0.040	1.00	0.040
2.00	0.080	2.00	0.080
5.00	0.200	5.00	0.200
10.00	0.400	10.00	0.400
20.00	0.800	20.00	0.800
50.00	1.600	50.00	1.600
100.00	3.200	100.00	3.200
250.00	8.000	250.00	8.000
500.00	16.000	500.00	16.000
1000.00	32.000	1000.00	32.000

NO.	PART NO.	PART NAME	SIZE	REMARKS
1	DPO-F(R)210P	PTO INSTALLATION DRAWING		
2	T 210 (R)PH1G			

D-I INDUSTRIAL
 CODE 00. 001