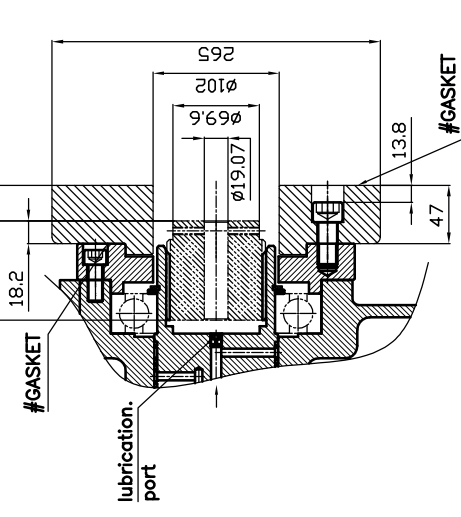
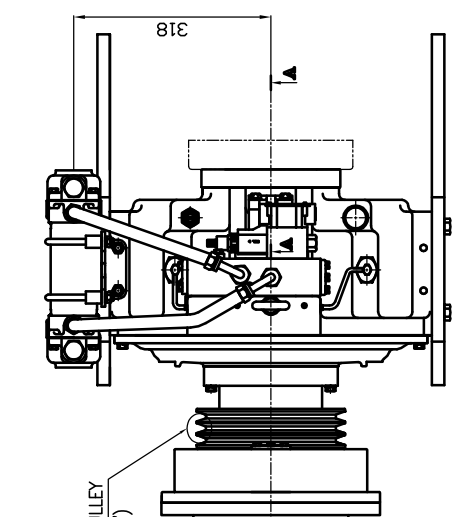
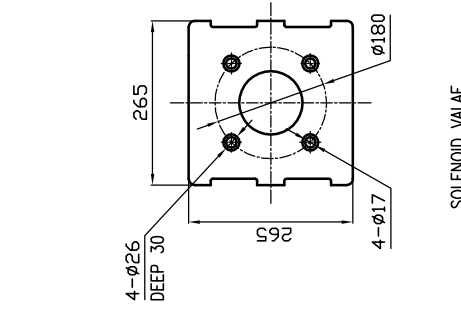
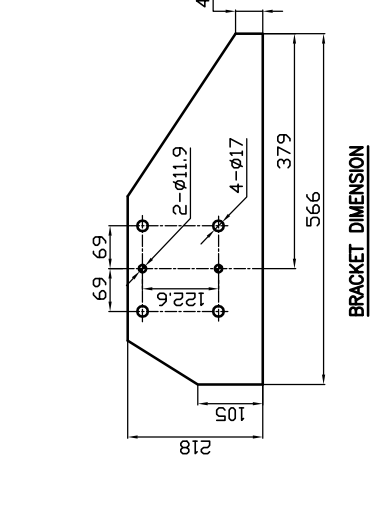
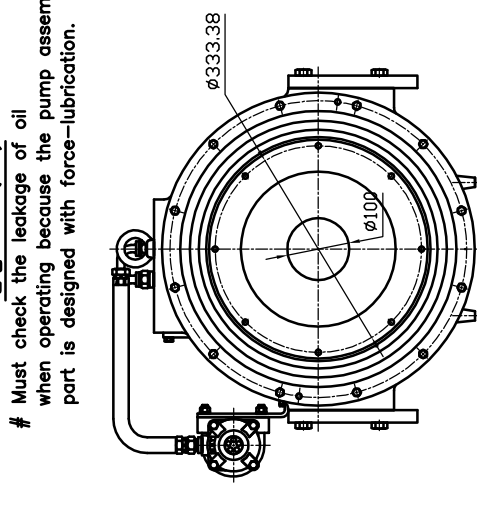
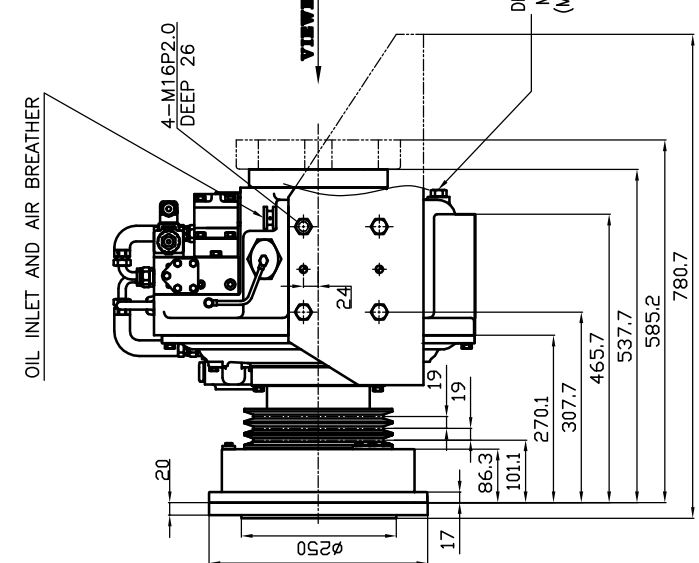
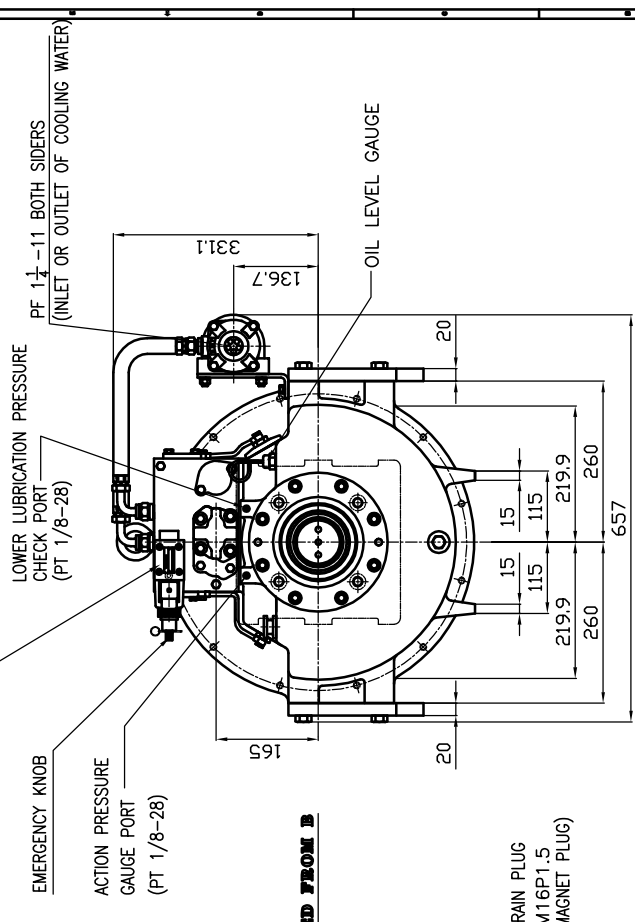


DPO 210 HYDRAULIC POWER TAKE OFF SPECIFICATION

GEAR RATIO	ONLY 1 : 1
TOTAL WEIGHT	APPROX. 250 kg(DRY)
OIL CAPACITY	APPROX. 5 L
OIL VISCOSITY	SAE # 30
OIL PRESSURE	1.56 ~ 2.45 MPa CLUTCH OIL
DIRECTION OF ROTATION	INPUT THE SAME DIRECTION AS ENGINE ROTATION
OIL CHANGE INTERVAL	OUTPUT THE SAME DIRECTION AS ENGINE ROTATION THE FIRST 100HOURS OF INITIAL OPERATION AND EVERY 1000HOURS THEREAFTER
SHIFTING LIMIT	UNDER 50% OF THE RATED ENGINE SPEED
OIL COOLER	WATER FLOW 40 ~ 60L/min TEMPERATURE OF COOLING WATER MAX 32°C



단면 A-A (2:1)
 # Must check the leakage of oil when operating because the pump assembled part is designed with force-lubrication.



REMARK

1. STANDARD SPECIFICATION
2. DRIVING RING: DUMMY PLATE INCLUDING SAE 11.5"
3. SIZE OF PUMP FLANGE MAY BE CHANGED DEPENDING ON PUMP SPEC.

TOLERANCE ON DIMENSIONS			PART NO.			PART NAME			MATERIAL			SIZE		
FRACTIONS	DECIMALS	ANGLES												
1/8	0.125	30°	±0.1	±0.05	±0.05	1/1	1/1	1/1	1/1	1/1	1/1	1/1	1/1	1/1
1/16	0.0625	45°	±0.05	±0.025	±0.025	1/1	1/1	1/1	1/1	1/1	1/1	1/1	1/1	1/1
1/32	0.03125	60°	±0.025	±0.0125	±0.0125	1/1	1/1	1/1	1/1	1/1	1/1	1/1	1/1	1/1
1/64	0.015625	90°	±0.0125	±0.00625	±0.00625	1/1	1/1	1/1	1/1	1/1	1/1	1/1	1/1	1/1
1/128	0.0078125	120°	±0.00625	±0.003125	±0.003125	1/1	1/1	1/1	1/1	1/1	1/1	1/1	1/1	1/1
1/256	0.00390625	150°	±0.003125	±0.0015625	±0.0015625	1/1	1/1	1/1	1/1	1/1	1/1	1/1	1/1	1/1
1/512	0.001953125	180°	±0.0015625	±0.00078125	±0.00078125	1/1	1/1	1/1	1/1	1/1	1/1	1/1	1/1	1/1

APPROVED BY: [Signature] CHECKED BY: [Signature] DESIGNED BY: [Signature]

DATE: 2024.08.01

SCALE: 1/1

DPO-F(R)210P TYPE: PTO INSTALLATION DRAWING

T 2 1 0 F(R)PSG NAME: T 2 1 0 F(R)PSG

D-I INDUSTRIAL CODE NO. A