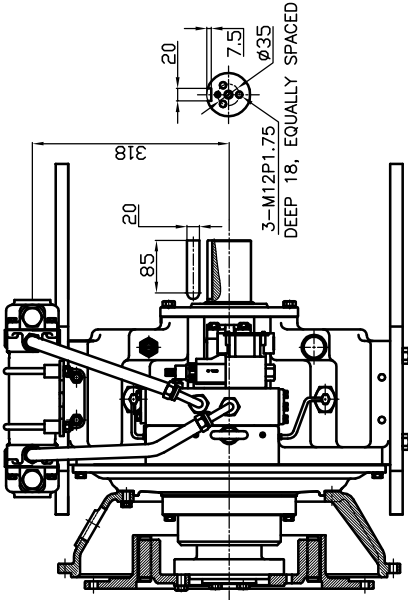


REV.	SYMBOL	DESCRIPTION	DATE	BY	CHKD	APP'D

DPO 210 HYDRAULIC POWER TAKE OFF SPECIFICATION	
GEAR RATIO	ONLY 1 : 1
TOTAL WEIGHT	APPROX. 250 kg(DRY)
OIL CAPACITY	APPROX. 5 L
OIL VISCOSITY	SAE # 30
OIL PRESSURE	1.56 ~ 2.45 MPa
DIRECTION OF ROTATION	CLUTCH OIL
OIL CHANGE INTERVAL	THE SAME DIRECTION AS ENGINE ROTATION
SHIFTING LIMIT	THE FIRST 100HOURS OF INITIAL OPERATION AND EVERY 1000HOURS THEREAFTER
OIL COOLER	UNDER 50% OF THE RATED ENGINE SPEED WATER FLOW 40 ~ 60L/min TEMPERATURE OF COOLING WATER MAX. 32°C

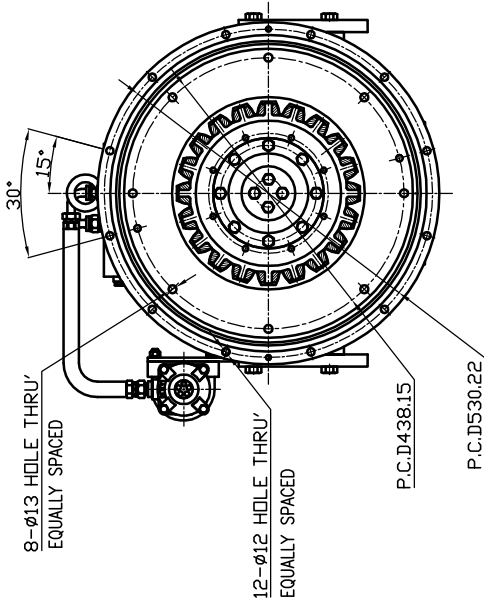
ROTATION DIRECTION BY MODEL (VIEWED FROM B)

MODEL	INPUT (ENGINE)	OUTPUT (PTO)
DPO-F210S	(RIGHT)	(RIGHT)
DPO-R210S	(LEFT)	(LEFT)

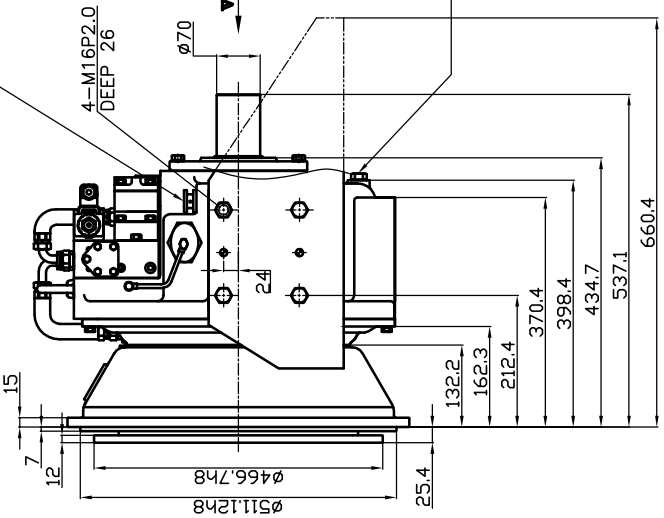


SOLENOID VALVE
DC24V

OIL INLET AND AIR BREATHER

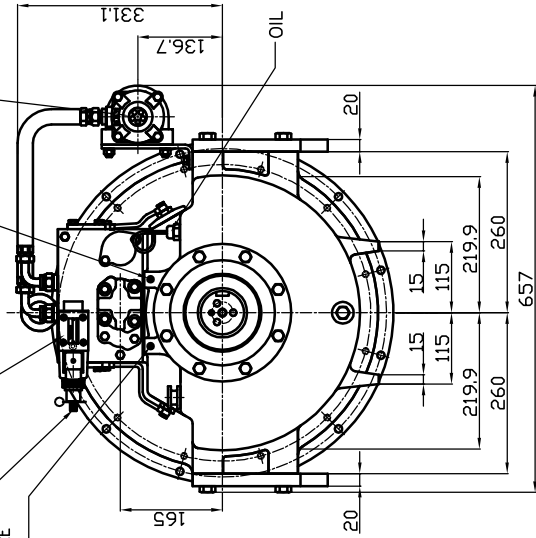


EMERGENCY KNOB



LOWER LUBRICATION PRESSURE CHECK PORT (PT 1/8-28)

PF 1 1/4-11 BOTH SIDERS (INLET OR OUTLET OF COOLING WATER)



REMARK

1. HOUSING: SAE#1
2. DRIVING RING: SAE 14"
3. OUTPUT SHAFT SPEC: SHAFT 70_ KEY 20mm*95mm

TOLERANCE ON PARTS		TOLERANCE ON MATERIAL		TOLERANCE ON DIMENSIONS	
POSITION	DETAILS	ANGLES	ANGLES	ANGLES	ANGLES
1	±0.05	±0.1	±0.1	±0.1	±0.1
2	±0.03	±0.1	±0.1	±0.1	±0.1
3	±0.02	±0.1	±0.1	±0.1	±0.1
4	±0.01	±0.1	±0.1	±0.1	±0.1
5	±0.01	±0.1	±0.1	±0.1	±0.1
6	±0.01	±0.1	±0.1	±0.1	±0.1
7	±0.01	±0.1	±0.1	±0.1	±0.1
8	±0.01	±0.1	±0.1	±0.1	±0.1
9	±0.01	±0.1	±0.1	±0.1	±0.1
10	±0.01	±0.1	±0.1	±0.1	±0.1
11	±0.01	±0.1	±0.1	±0.1	±0.1
12	±0.01	±0.1	±0.1	±0.1	±0.1
13	±0.01	±0.1	±0.1	±0.1	±0.1
14	±0.01	±0.1	±0.1	±0.1	±0.1
15	±0.01	±0.1	±0.1	±0.1	±0.1
16	±0.01	±0.1	±0.1	±0.1	±0.1
17	±0.01	±0.1	±0.1	±0.1	±0.1
18	±0.01	±0.1	±0.1	±0.1	±0.1
19	±0.01	±0.1	±0.1	±0.1	±0.1
20	±0.01	±0.1	±0.1	±0.1	±0.1
21	±0.01	±0.1	±0.1	±0.1	±0.1
22	±0.01	±0.1	±0.1	±0.1	±0.1
23	±0.01	±0.1	±0.1	±0.1	±0.1
24	±0.01	±0.1	±0.1	±0.1	±0.1
25	±0.01	±0.1	±0.1	±0.1	±0.1
26	±0.01	±0.1	±0.1	±0.1	±0.1
27	±0.01	±0.1	±0.1	±0.1	±0.1
28	±0.01	±0.1	±0.1	±0.1	±0.1
29	±0.01	±0.1	±0.1	±0.1	±0.1
30	±0.01	±0.1	±0.1	±0.1	±0.1
31	±0.01	±0.1	±0.1	±0.1	±0.1
32	±0.01	±0.1	±0.1	±0.1	±0.1
33	±0.01	±0.1	±0.1	±0.1	±0.1
34	±0.01	±0.1	±0.1	±0.1	±0.1
35	±0.01	±0.1	±0.1	±0.1	±0.1
36	±0.01	±0.1	±0.1	±0.1	±0.1
37	±0.01	±0.1	±0.1	±0.1	±0.1
38	±0.01	±0.1	±0.1	±0.1	±0.1
39	±0.01	±0.1	±0.1	±0.1	±0.1
40	±0.01	±0.1	±0.1	±0.1	±0.1
41	±0.01	±0.1	±0.1	±0.1	±0.1
42	±0.01	±0.1	±0.1	±0.1	±0.1
43	±0.01	±0.1	±0.1	±0.1	±0.1
44	±0.01	±0.1	±0.1	±0.1	±0.1
45	±0.01	±0.1	±0.1	±0.1	±0.1
46	±0.01	±0.1	±0.1	±0.1	±0.1
47	±0.01	±0.1	±0.1	±0.1	±0.1
48	±0.01	±0.1	±0.1	±0.1	±0.1
49	±0.01	±0.1	±0.1	±0.1	±0.1
50	±0.01	±0.1	±0.1	±0.1	±0.1
51	±0.01	±0.1	±0.1	±0.1	±0.1
52	±0.01	±0.1	±0.1	±0.1	±0.1
53	±0.01	±0.1	±0.1	±0.1	±0.1
54	±0.01	±0.1	±0.1	±0.1	±0.1
55	±0.01	±0.1	±0.1	±0.1	±0.1
56	±0.01	±0.1	±0.1	±0.1	±0.1
57	±0.01	±0.1	±0.1	±0.1	±0.1
58	±0.01	±0.1	±0.1	±0.1	±0.1
59	±0.01	±0.1	±0.1	±0.1	±0.1
60	±0.01	±0.1	±0.1	±0.1	±0.1
61	±0.01	±0.1	±0.1	±0.1	±0.1
62	±0.01	±0.1	±0.1	±0.1	±0.1
63	±0.01	±0.1	±0.1	±0.1	±0.1
64	±0.01	±0.1	±0.1	±0.1	±0.1
65	±0.01	±0.1	±0.1	±0.1	±0.1
66	±0.01	±0.1	±0.1	±0.1	±0.1
67	±0.01	±0.1	±0.1	±0.1	±0.1
68	±0.01	±0.1	±0.1	±0.1	±0.1
69	±0.01	±0.1	±0.1	±0.1	±0.1
70	±0.01	±0.1	±0.1	±0.1	±0.1
71	±0.01	±0.1	±0.1	±0.1	±0.1
72	±0.01	±0.1	±0.1	±0.1	±0.1
73	±0.01	±0.1	±0.1	±0.1	±0.1
74	±0.01	±0.1	±0.1	±0.1	±0.1
75	±0.01	±0.1	±0.1	±0.1	±0.1
76	±0.01	±0.1	±0.1	±0.1	±0.1
77	±0.01	±0.1	±0.1	±0.1	±0.1
78	±0.01	±0.1	±0.1	±0.1	±0.1
79	±0.01	±0.1	±0.1	±0.1	±0.1
80	±0.01	±0.1	±0.1	±0.1	±0.1
81	±0.01	±0.1	±0.1	±0.1	±0.1
82	±0.01	±0.1	±0.1	±0.1	±0.1
83	±0.01	±0.1	±0.1	±0.1	±0.1
84	±0.01	±0.1	±0.1	±0.1	±0.1
85	±0.01	±0.1	±0.1	±0.1	±0.1
86	±0.01	±0.1	±0.1	±0.1	±0.1
87	±0.01	±0.1	±0.1	±0.1	±0.1
88	±0.01	±0.1	±0.1	±0.1	±0.1
89	±0.01	±0.1	±0.1	±0.1	±0.1
90	±0.01	±0.1	±0.1	±0.1	±0.1
91	±0.01	±0.1	±0.1	±0.1	±0.1
92	±0.01	±0.1	±0.1	±0.1	±0.1
93	±0.01	±0.1	±0.1	±0.1	±0.1
94	±0.01	±0.1	±0.1	±0.1	±0.1
95	±0.01	±0.1	±0.1	±0.1	±0.1
96	±0.01	±0.1	±0.1	±0.1	±0.1
97	±0.01	±0.1	±0.1	±0.1	±0.1
98	±0.01	±0.1	±0.1	±0.1	±0.1
99	±0.01	±0.1	±0.1	±0.1	±0.1
100	±0.01	±0.1	±0.1	±0.1	±0.1

DI INDUSTRIAL

DPO-F(R)210S
PTO INSTALLATION DRAWING
T 210 F(R)SH1G