

개정번호 REV.No	부 호 SYM.	내 용 DESCRIPTION	위 치 POSITION	제용서번호 ADOPTION SHEET NO.	입 자 DATE	수 정 REV'D	승 인 APP'D

12-Ø11 HOLE THRU'
EQUALLY SPACED

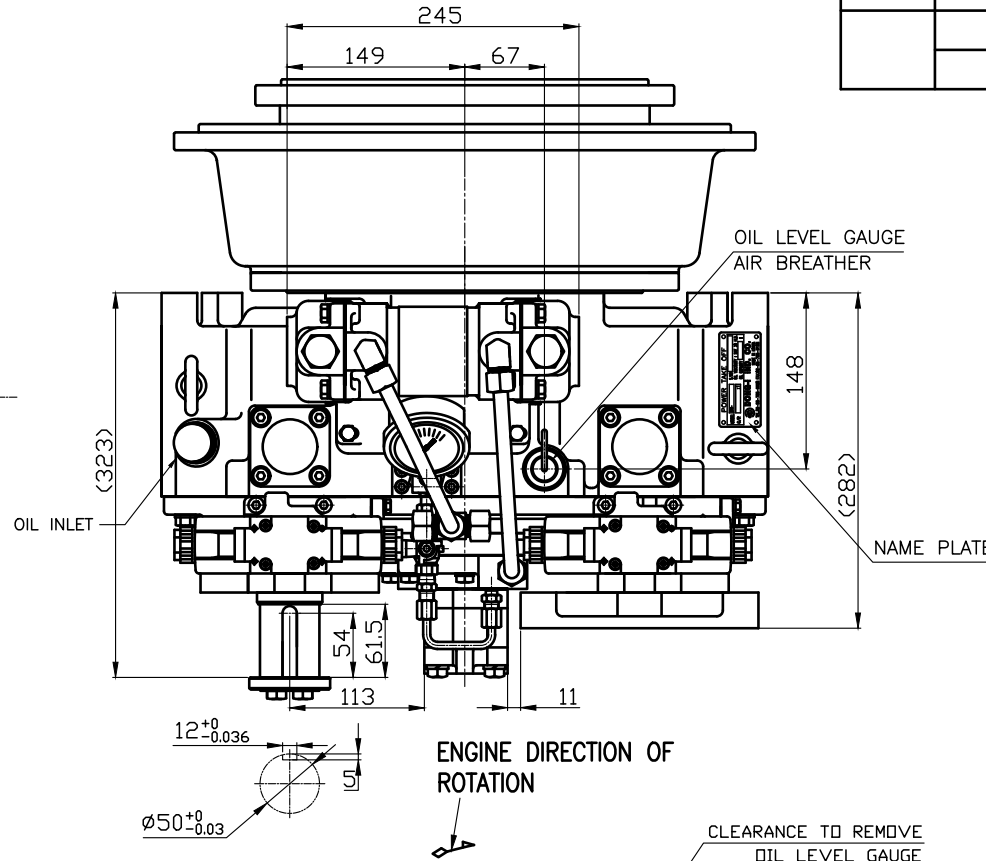
8-Ø11 HOLE THRU'
EQUALLY SPACED

P.C.D333.38

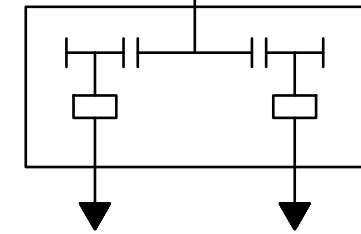
P.C.D466.72

HOUSING: SAE#2, DRIVING RING: SAE 11.5"

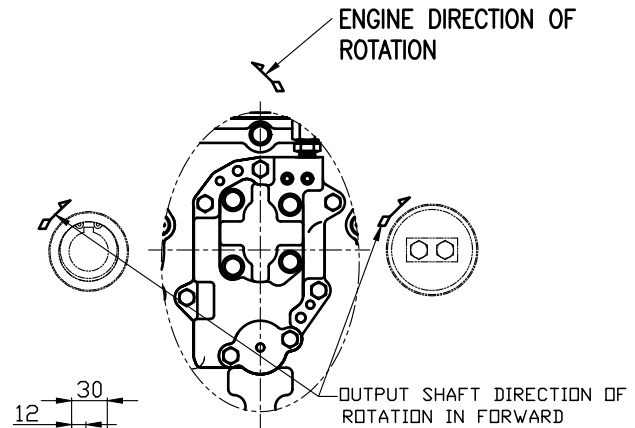
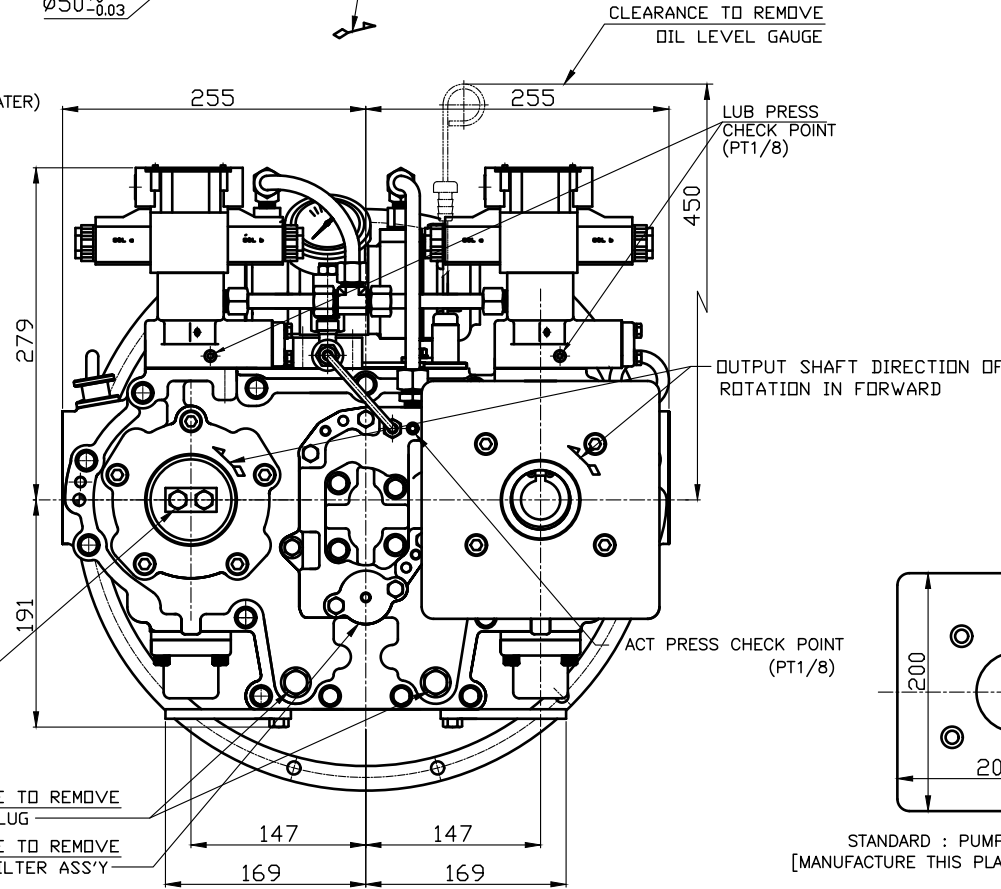
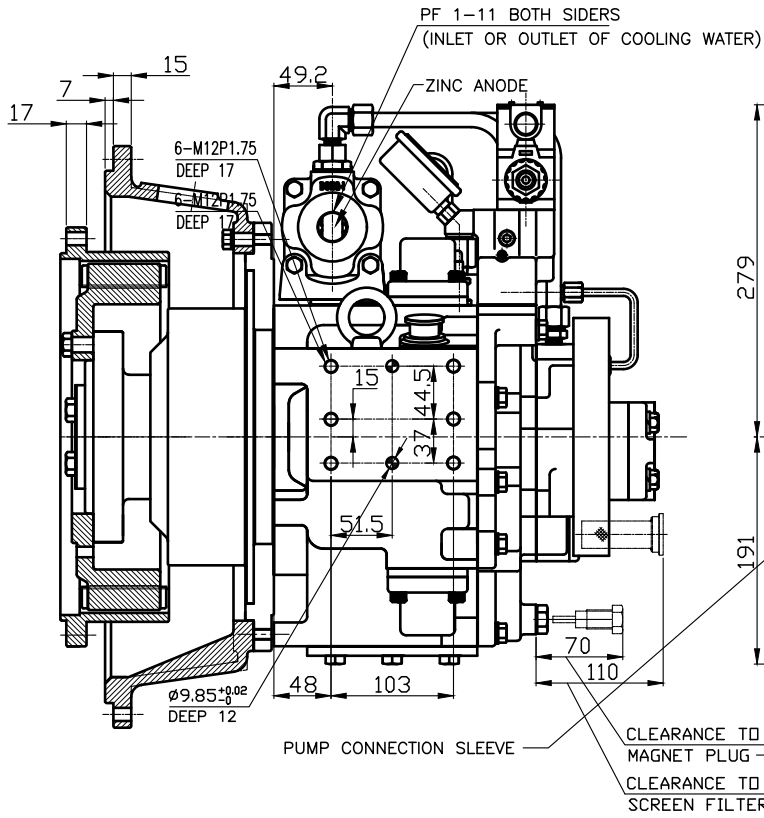
View -A



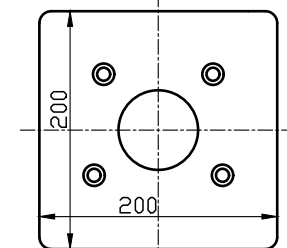
DPO-087 POWER TAKE OFF	
GEAR RATIO	1:1 / 0.85:1
TOTAL WEIGHT	APPROX. 150Kg(DRY)
OIL CAPACITY	APPROX. 3 L
OIL VISCOSITY	SAE # 30
OIL PRESSURE	20 ~ 26kg/cm ² CLUTCH OIL
OIL CHANGE INTERVAL	THE FIRST 100HOURS OF INITIAL OPERATION AND EVERY 1000HOURS THEREAFTER
OIL COOLER	WATER FLOW 20 ~ 40 L/m
	TEMPERATURE OF COOLING WATER MAX 32°C
OPERATING TORQUE OF SHIFTING LEVER	UNDER 30kg·cm



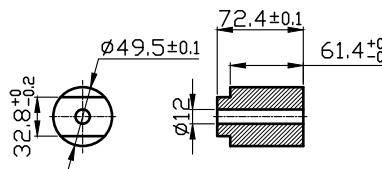
Scheme of Power train



REAR PTO



FRONT PTO



REMARK
1. HOUSING: SAE#2
2. DRIVING RING: SAE 11.5"

공통공차 FRACTIONS	TOLERANCE ON DECIMALS	각도 ANGLES	번호 NO.	품 명 PART NO.	품 명 PART NAME	개 수 QTY	재 질 MATERIAL	규 격 SIZE	비 고 REMARKS
± — —	± — —	± — —			주 기 1 참조				ORIGINAL DWG. NO.
1 초과 4 이하	± 0.3	± 0.1			DATE 2015.01.12				DPO-087
4 16	± 0.5	± 0.2			SCALE 1/1				POWER TAKE OFF
16 63	± 0.7	± 0.3			APPROVED BY				NAME
63 250	± 1.2	± 0.5			CHECKED BY				DWG. NO.
250 1000	± 2.0	± 0.8							T 0 8 7 F(R) B G E H2115
									D-I INDUSTRIAL
									크 기 A 0
									코 드 번 호 CODE ID. NO.

제 품 HS Code	소 재 HS Code	중 량 Weight	단 위 KG