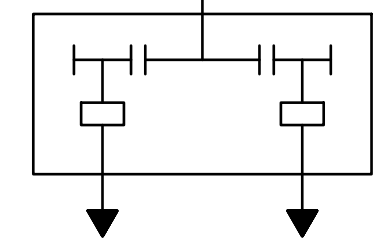
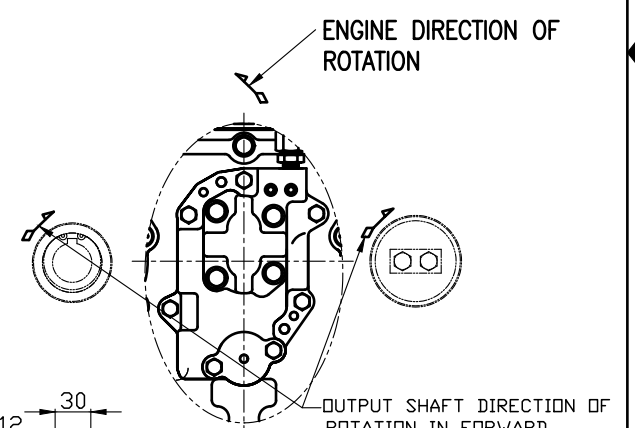


개정번호 REV.No	부 호 SYM.	내 용 DESCRIPTION	위 치 POSITION	제용서번호 ADOPTION SHEET NO.	입 자 DATE	수 정 REV'D	승 인 APP'D

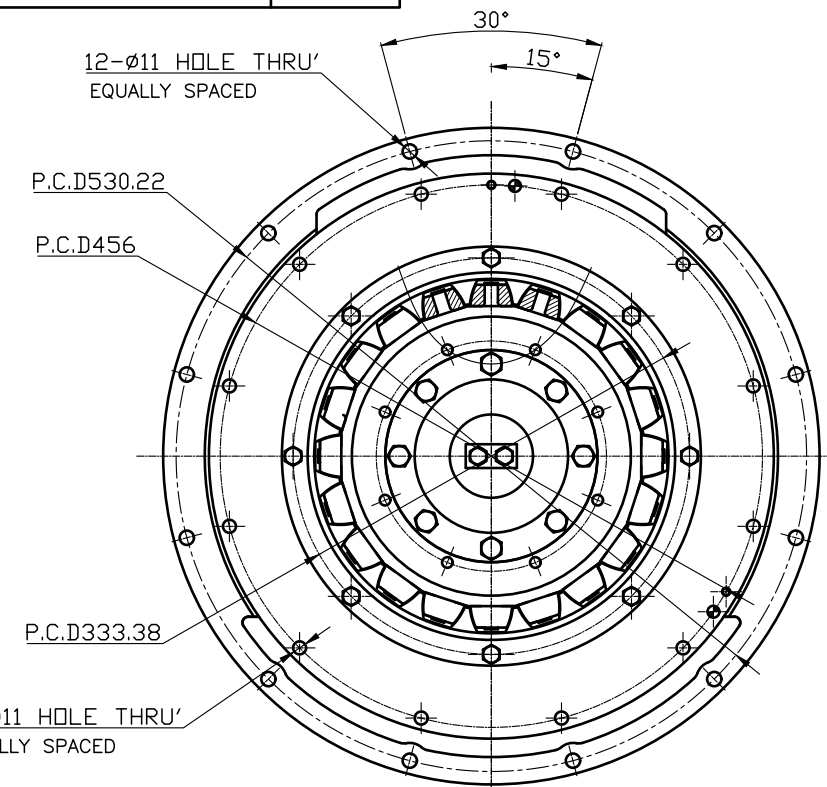
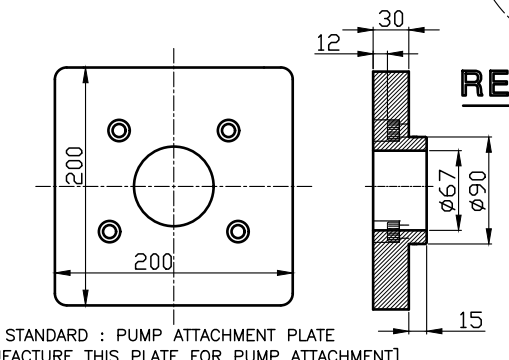
DPO-087 POWER TAKE OFF	
GEAR RATIO	1:1 / 0.85:1
TOTAL WEIGHT	APPROX. 150Kg(DRY)
OIL CAPACITY	APPROX. 3 L
OIL VISCOSITY	SAE # 30
OIL PRESSURE	20 ~ 26kg/cm ² CLUTCH OIL
OIL CHANGE INTERVAL	THE FIRST 100HOURS OF INITIAL OPERATION AND EVERY 1000HOURS THEREAFTER
OIL COOLER	WATER FLOW 20 ~ 40 L/m
	TEMPERATURE OF COOLING WATER MAX 32°C
OPERATING TORQUE OF SHIFTING LEVER	UNDER 30kg·cm



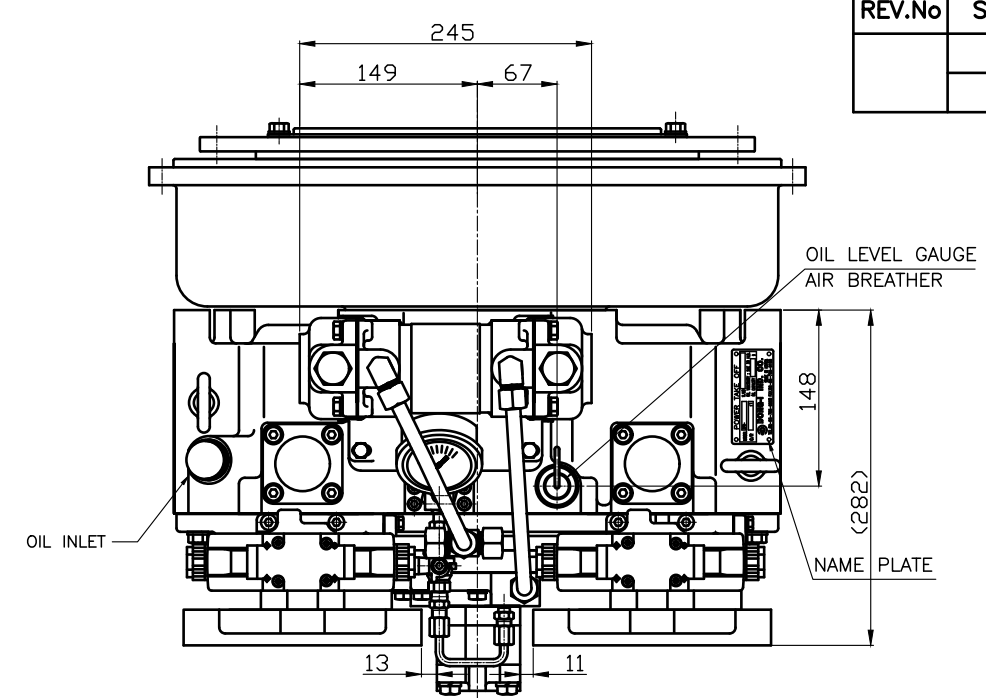
Scheme of Power train



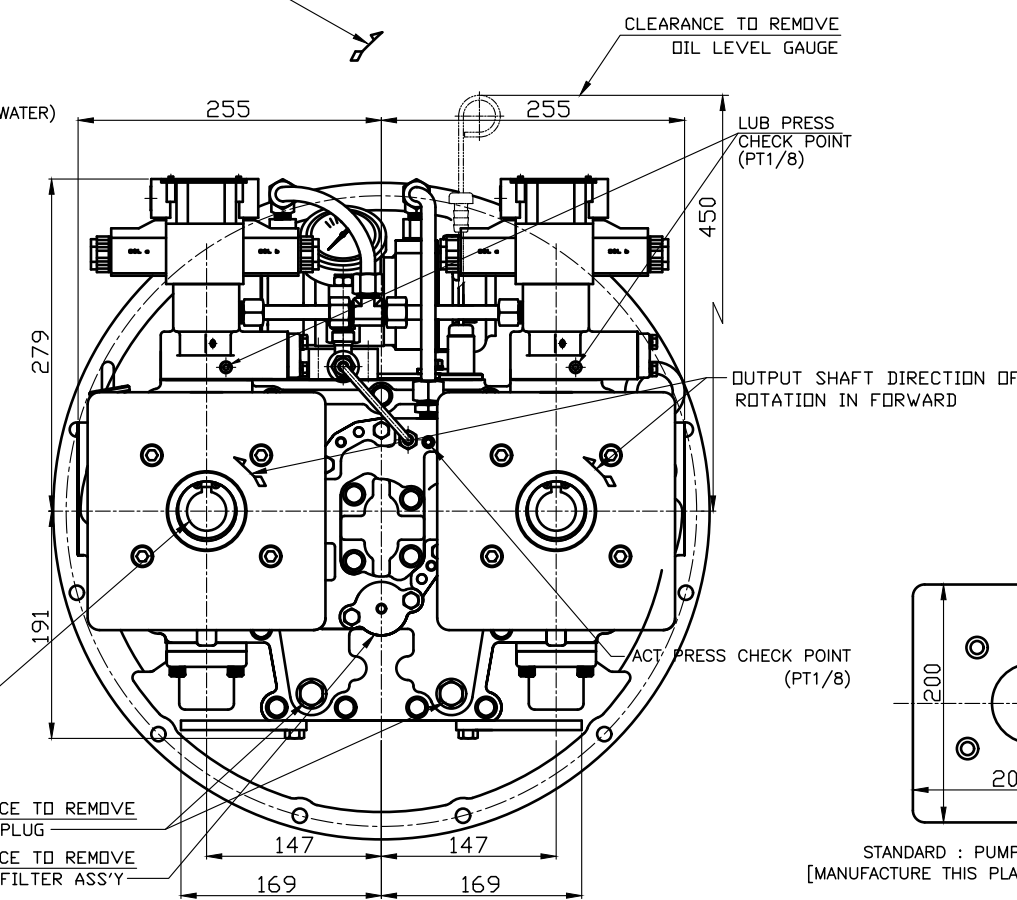
REAR PTO



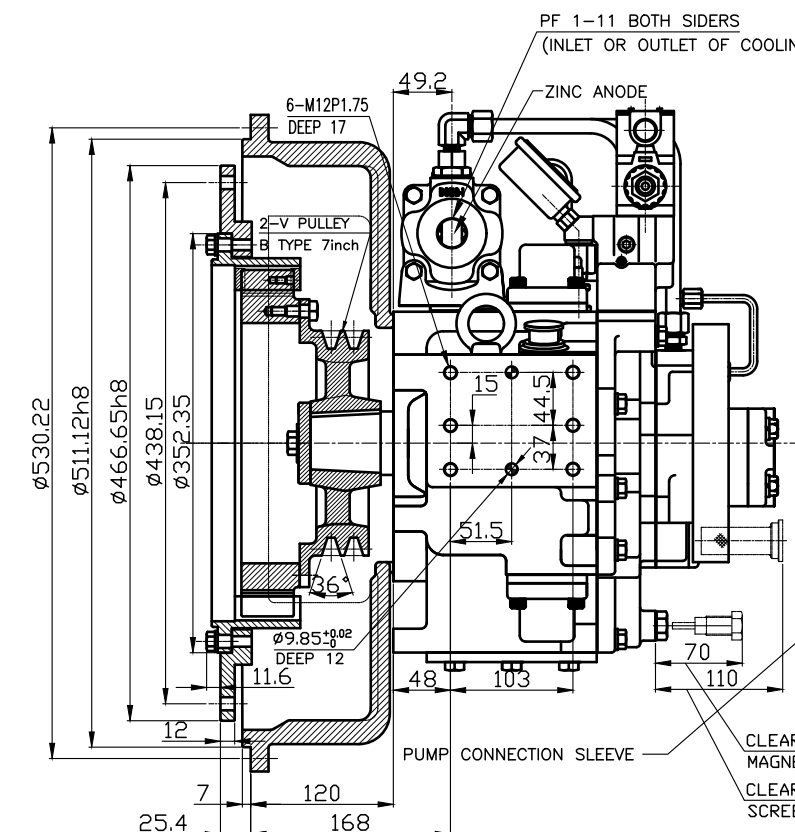
View -A



ENGINE DIRECTION OF ROTATION



FRONT PTO



A

REMARK
1. HOUSING: SAE#1
2. DRIVING RING: SAE 14"

제 품 HS Code	소 재 HS Code	중 량 Weight	KG
구 크 SIZE			

공 용 공 차 TOLERANCE ON	분 수 FRACTIONS	소 수 DECIMALS	각 도 ANGLES
±	±	±	±

번호 NO.	부 호 PART NO.	부 명 PART NAME	개 수 QTY	재 질 MATERIAL	구 크 SIZE	비 고 REMARKS

DATE 2015.01.12	SCALE 1/1	TYPE DPO-087	REMARKS ORIGINAL DWG. NO.
APPROVED BY	CHECKED BY	NAME 성욱	DWG. NO. T 0 8 7 F(R) C G E H114
D-I INDUSTRIAL		크 기 SIZE A 0	코 드 번 호 CODE ID. NO.