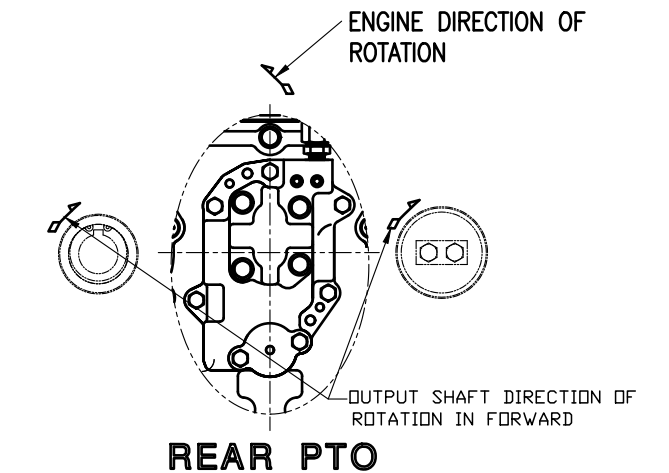
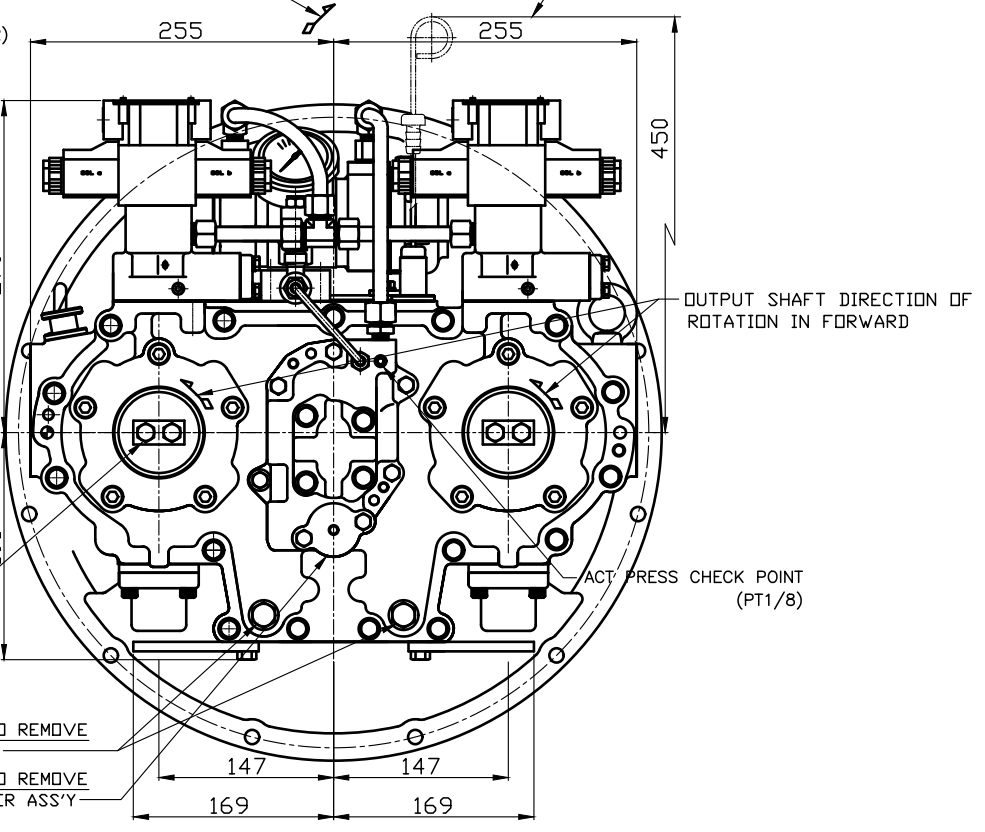
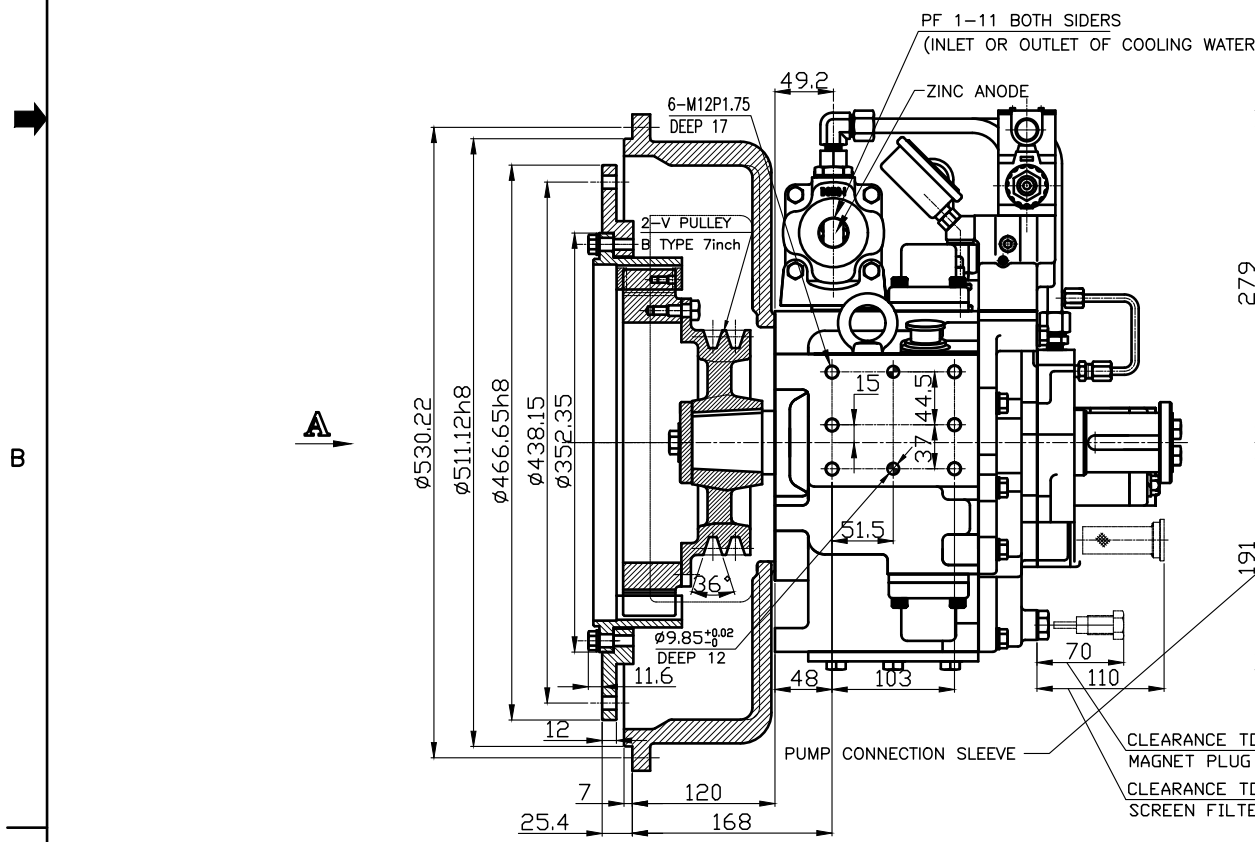
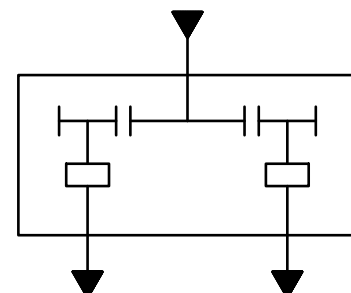
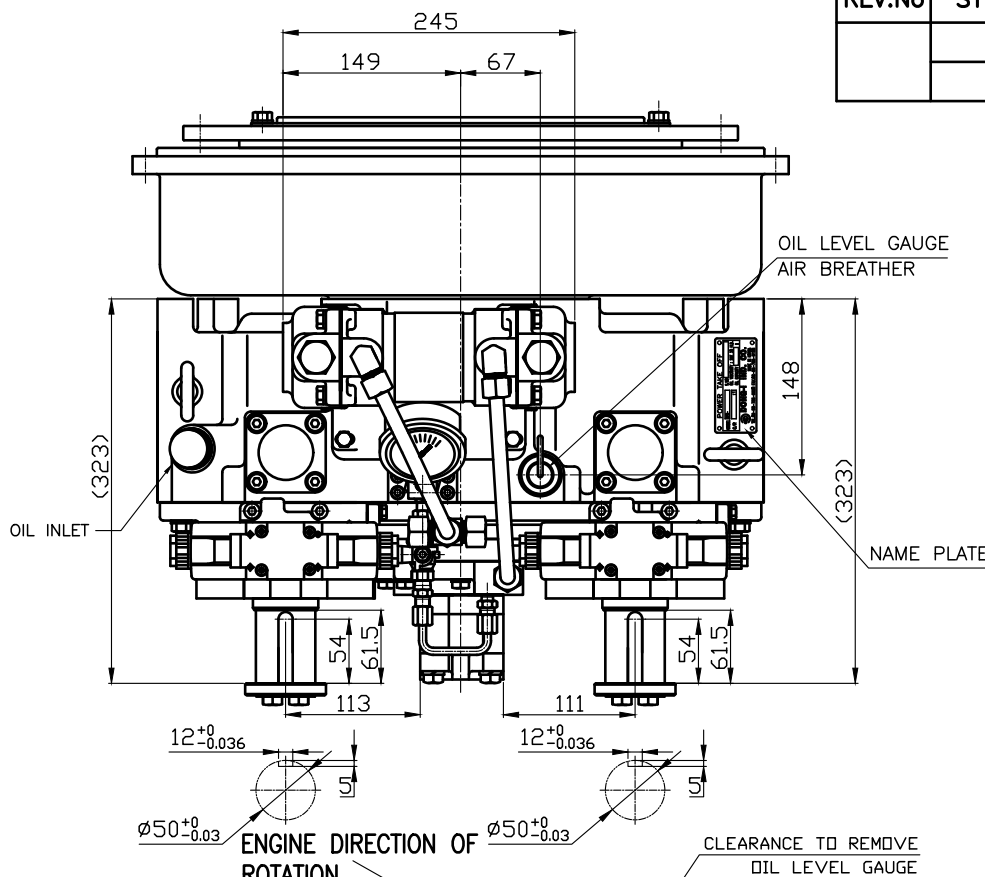
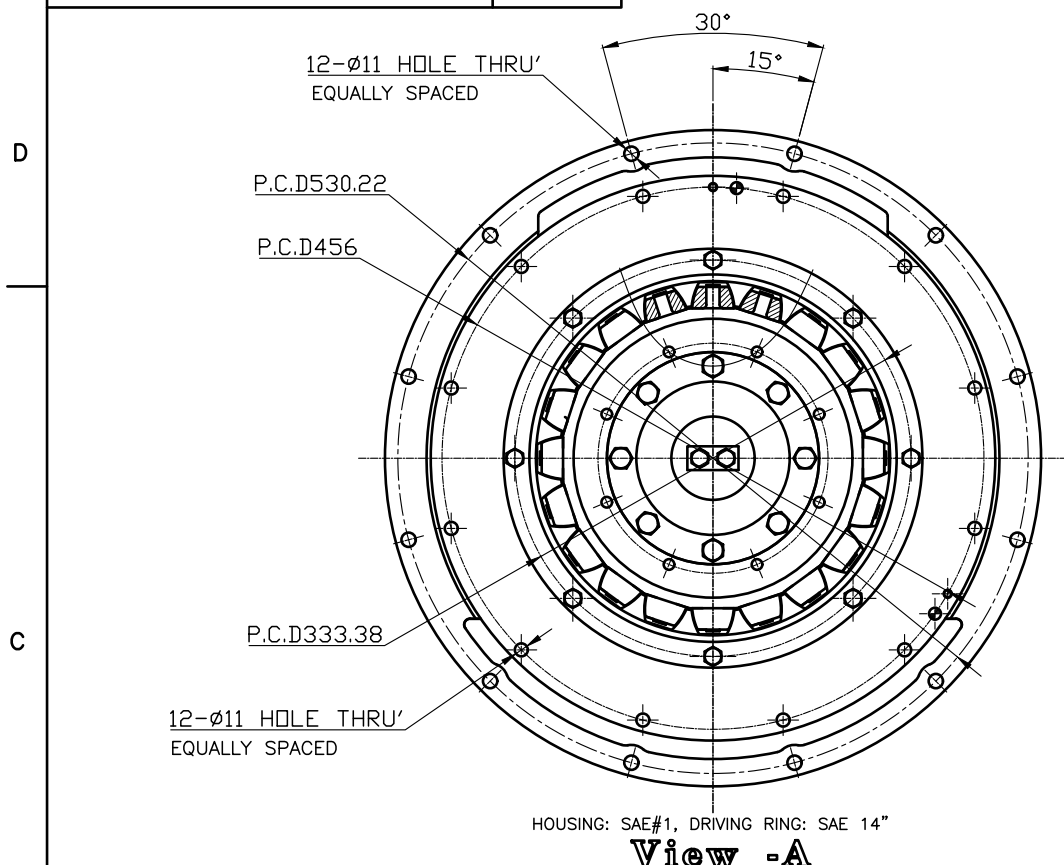
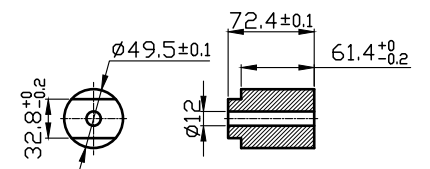


개정번호 REV.No	부 호 SYM.	내 용 DESCRIPTION	위 치 POSITION	제용서번호 ADOPTION SHEET NO.	입 자 DATE	수 정 REV'D	승 인 APP'D

DPO-087 POWER TAKE OFF	
GEAR RATIO	1:1 / 0.85:1
TOTAL WEIGHT	APPROX. 150kg(DRY)
OIL CAPACITY	APPROX. 3 L
OIL VISCOSITY	SAE # 30
OIL PRESSURE	20 ~ 26kg/cm ² CLUTCH OIL
OIL CHANGE INTERVAL	THE FIRST 100HOURS OF INITIAL OPERATION AND EVERY 1000HOURS THEREAFTER
OIL COOLER	WATER FLOW 20 ~ 40 L/m
	TEMPERATURE OF COOLING WATER MAX 32°C
OPERATING TORQUE OF SHIFTING LEVER	UNDER 30kg·cm



FRONT PTO



REMARK
1. HOUSING: SAE#1
2. DRIVING RING: SAE 14"

TOLERANCE ON		
FRACTIONS	DECIMALS	ANGLES
±	±	±

번호 NO.	품 명 PART NO.	품 명 PART NAME	개 수 QTY	재 질 MATERIAL	규 격 SIZE	비 고 REMARKS

DATE	SCALE	TYPE	NAME	DWG. NO.	크 기 SIZE	코 드 번 호 CODE ID. NO.
2015.01.12	1/1	DPO-087	POWER TAKE OFF	T 0 8 7 F(R) D G E H114	A 0	

제 품 HS Code	소 재 HS Code	중 량 Weight	단 위 KG

D-I INDUSTRIAL