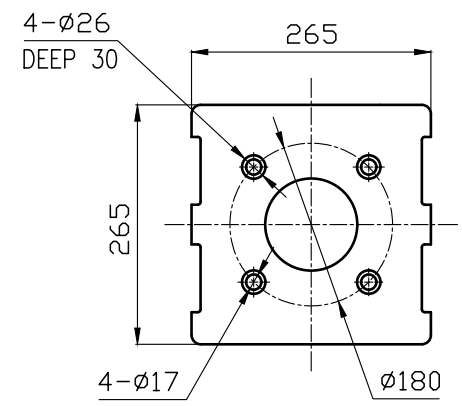
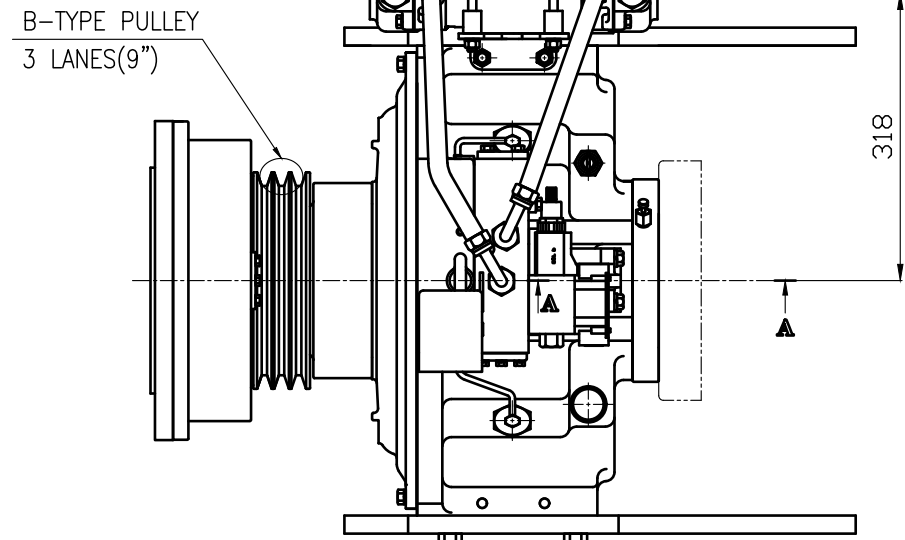


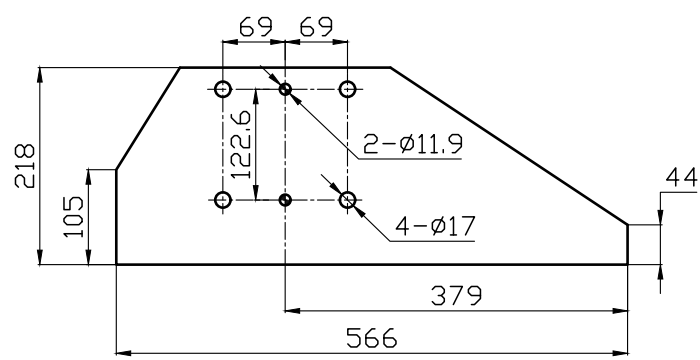
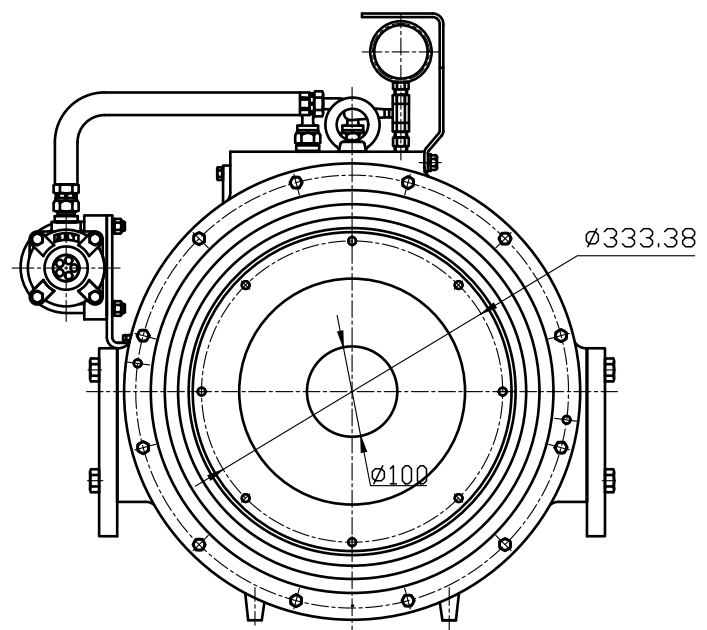
단면 A-A (2:1)

Must check the leakage of oil when operating because the pump assembled part is designed with force-lubrication.



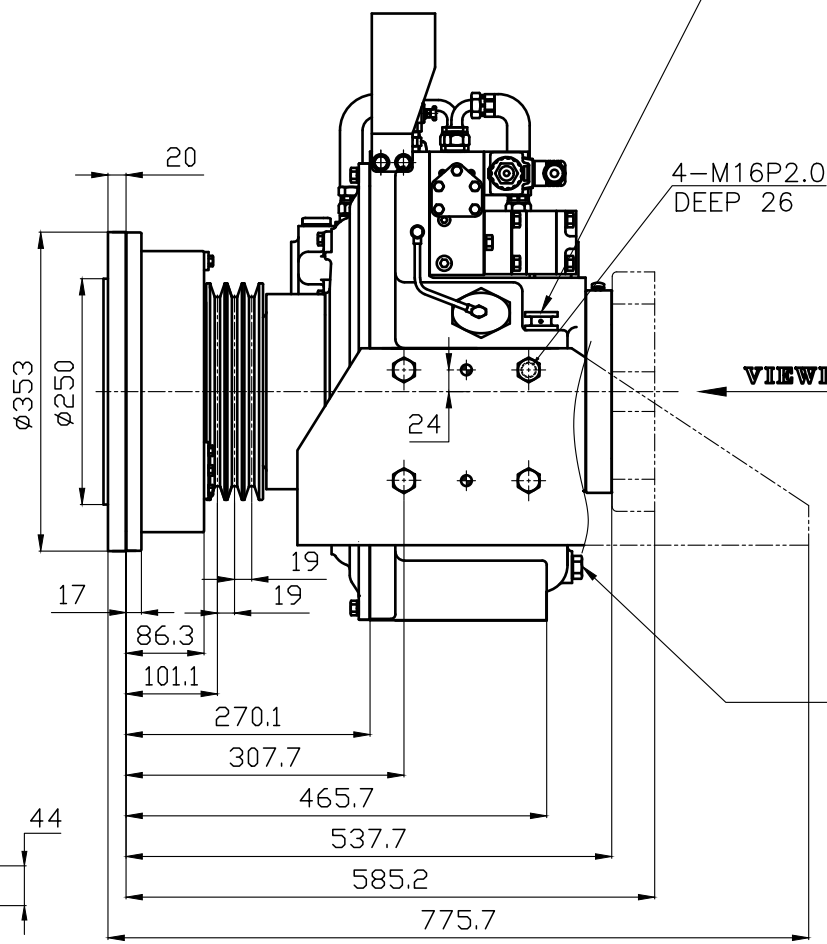
DPO 310 HYDRAULIC POWER TAKE OFF SPECIFICATION		
GEAR RATIO	ONLY 1 : 1	
TOTAL WEIGHT	APPROX. 250 kg(DRY)	
OIL CAPACITY	APPROX. 5 L	
OIL VISCOSITY	SAE # 30	
OIL PRESSURE	1.56 ~ 2.45 MPa	CLUTCH OIL
DIRECTION OF ROTATION	INPUT	THE SAME DIRECTION AS ENGINE ROTATION
	OUTPUT	THE SAME DIRECTION AS ENGINE ROTATION
OIL CHANGE INTERVAL	THE FIRST 100HOURS OF INITIAL OPERATION	
	AND EVERY 1000HOURS THEREAFTER	
SHIFTING LIMIT	UNDER 50% OF THE RATED ENGINE SPEED	
OIL COOLER	WATER FLOW 40 ~ 60L/min	
	TEMPERATURE OF COOLING WATER	MAX 32°C

ROTATION DIRECTION BY MODEL (VIEWED FROM B)		
MODEL	INPUT (ENGINE)	OUTPUT (PTO)
DPO-F310P	(RIGHT)	(RIGHT)
DPO-R310P	(LEFT)	(LEFT)



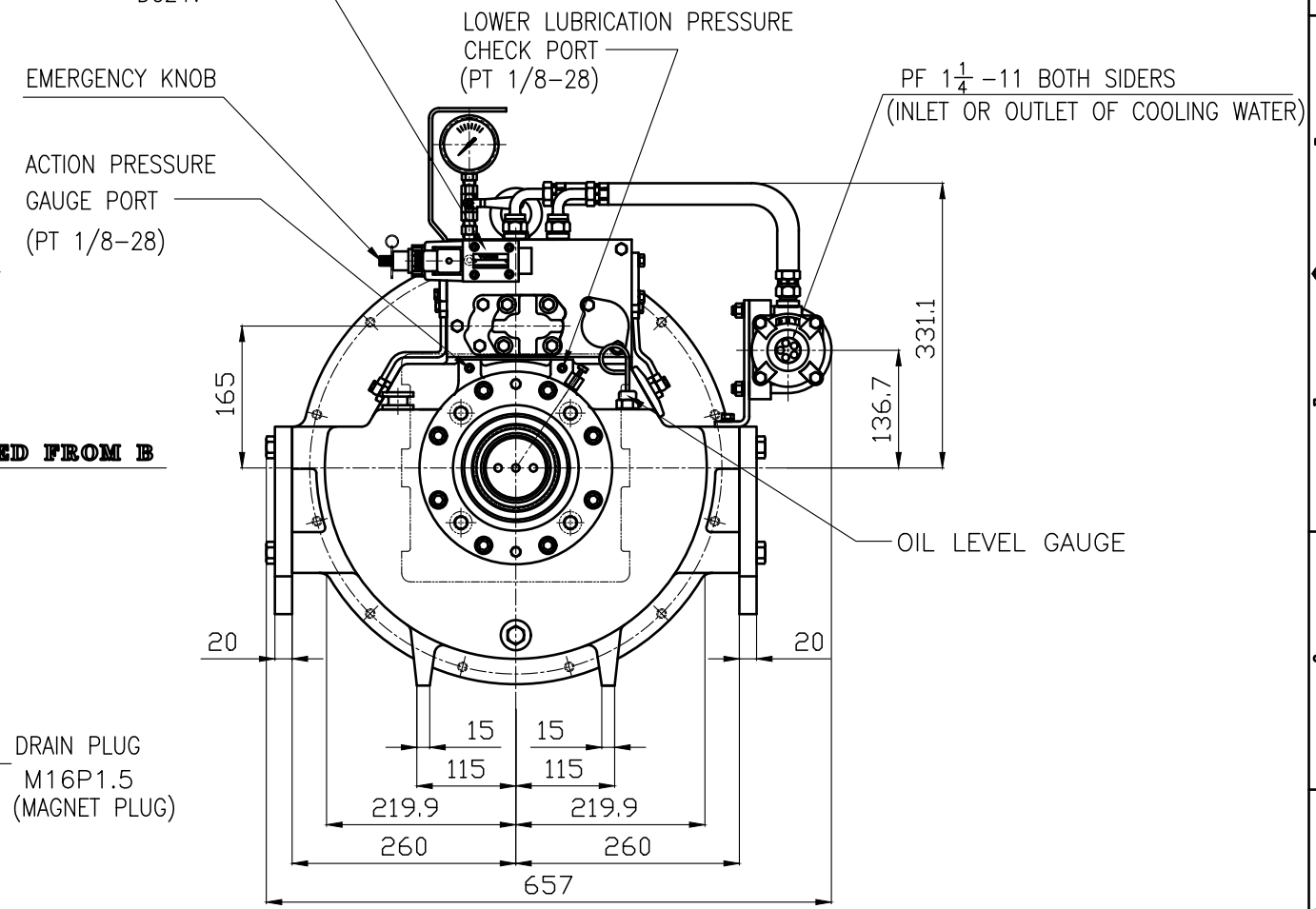
BRACKET DIMENSION

OIL INLET AND AIR BREATHER



VIEWED FROM B

SOLENOID VALVE DC24V



- REMARK
1. STANDARD SPECIFICATION
 2. DRIVING RING: DUMMY PLATE INCLUDING SAE 11.5"
 3. SIZE OF PUMP FLANGE MAY BE CHANGED DEPENDING ON PUMP SPEC.

공통규격	TOLERANCE ON	번호	PART NO.	명	PART NAME	개수	재료	필	구	SIZE	비	고	REMARKS
분수	소수	각도	MATERIAL		SCALE	TYPE	DPO-F(R)310P		ORIGINAL DWG. NO.				
±	±	±			1/1								
1	0.3	0.1			2013.02.05								
4	±0.6	±0.2											
16	±0.7	±0.3											
63	±1.2	±0.5											
250	1000	+2.0											

APPROVED BY	CHECKED BY	SCALE	1/1	TYPE	DPO-F(R)310P
		DATE	2013.02.05	NAME	PTO INSTALLATION DRAWING
		DWG. NO.	T 3 1 0 F(R)PSG	SIZE	A0
D-I INDUSTRIAL			CODE ID. NO.		