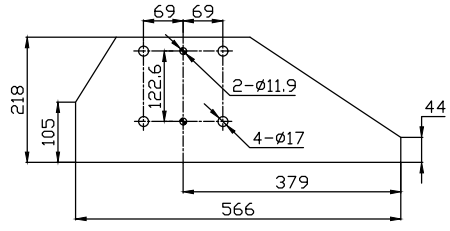
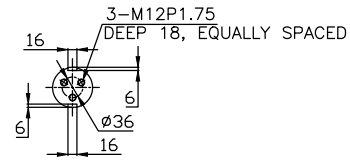
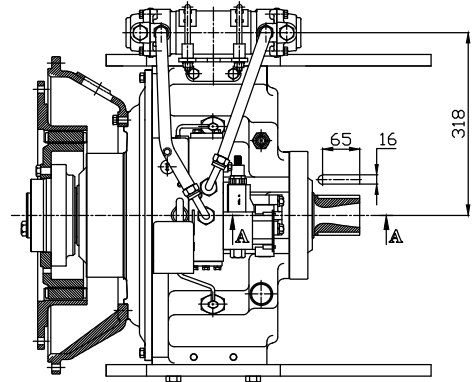


REV	SYMBOL	DESCRIPTION	POSITION	REVISION NO.	DATE	REV'D	APP'D

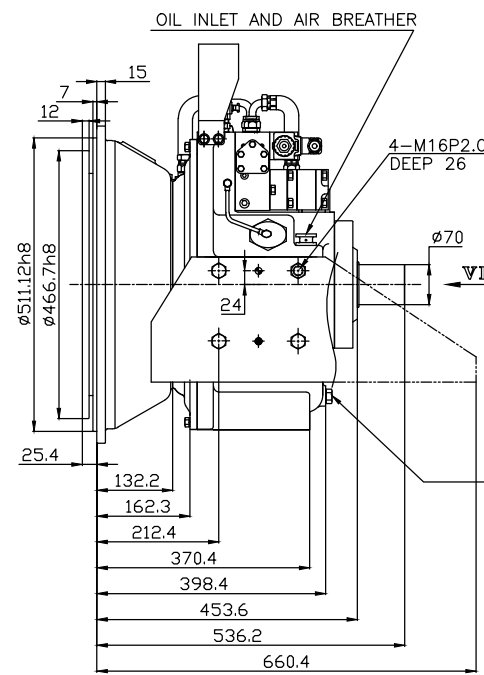
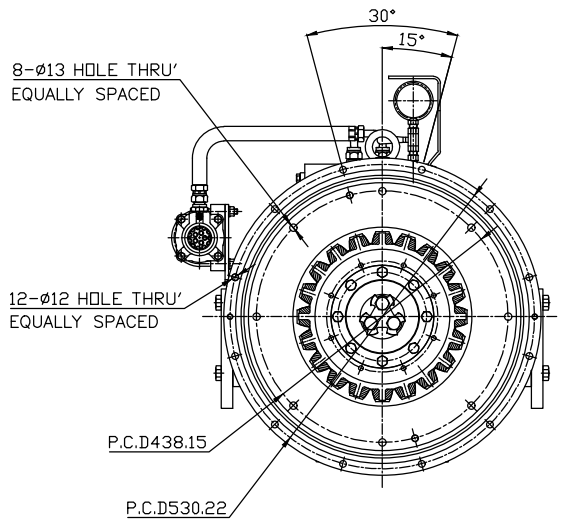
DPO 310 HYDRAULIC POWER TAKE OFF SPECIFICATION	
GEAR RATIO	ONLY 1 : 1
TOTAL WEIGHT	APPROX. 250 kg(DRY)
OIL CAPACITY	APPROX. 5 L
OIL VISCOSITY	SAE # 30
OIL PRESSURE	1.56 ~ 2.45 MPa CLUTCH OIL
DIRECTION OF ROTATION	INPUT THE SAME DIRECTION AS ENGINE ROTATION OUTPUT THE SAME DIRECTION AS ENGINE ROTATION
OIL CHANGE INTERVAL	THE FIRST 100HOURS OF INITIAL OPERATION AND EVERY 1000HOURS THEREAFTER
SHIFTING LIMIT	UNDER 50% OF THE RATED ENGINE SPEED
OIL COOLER	WATER FLOW 40 ~ 60L/min TEMPERATURE OF COOLING WATER MAX 32°C



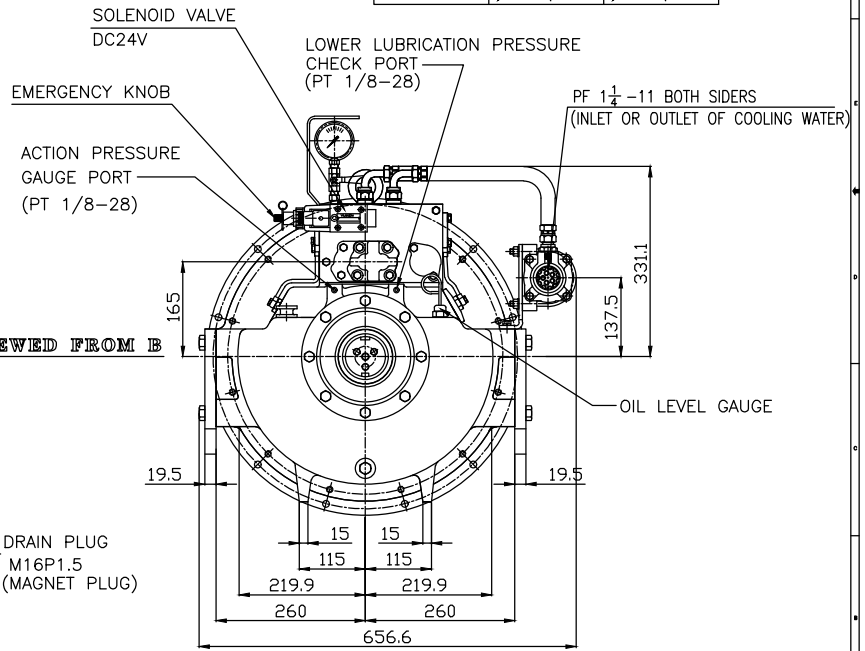
BRACKET DIMENSION



ROTATION DIRECTION BY MODEL (VIEWED FROM B)		
MODEL	INPUT (ENGINE)	OUTPUT (PTO)
DPO-F310S	(RIGHT)	(RIGHT)
DPO-R310S	(LEFT)	(LEFT)



VIEWED FROM B



REMARK

- HOUSING: SAE#1
- DRIVING RING: SAE 14"
- OUTPUT SHAFT SPEC: SHAFT ø70_ KEY 16mm*73mm

TOLERANCE ON		NO.	PART NO.	PART NAME	QTY	MATERIAL	SIZE	REMARKS
FRACTIONS	DECIMALS	ANGLES	MATERIAL					
±	±	±	DATE 2013.02.05 SCALE 1/1 TYPE DPO-F(R)310S ORIGINAL CTRL. NO.					
APPROVED BY			CHECKED BY			DRAWN DESIGNED		
NAME			NAME			PTO INSTALLATION DRAWING		
DWG. NO. T310F(R)SH1G			DWG. NO.			CODE ID. NO.		

